



Linsn Technology



# RV201 Receiver Specifications

V3.0

## Revision History

Document Version	Hardware Version	Revision Date	Note
V3.0	V4	2022/3	New edition

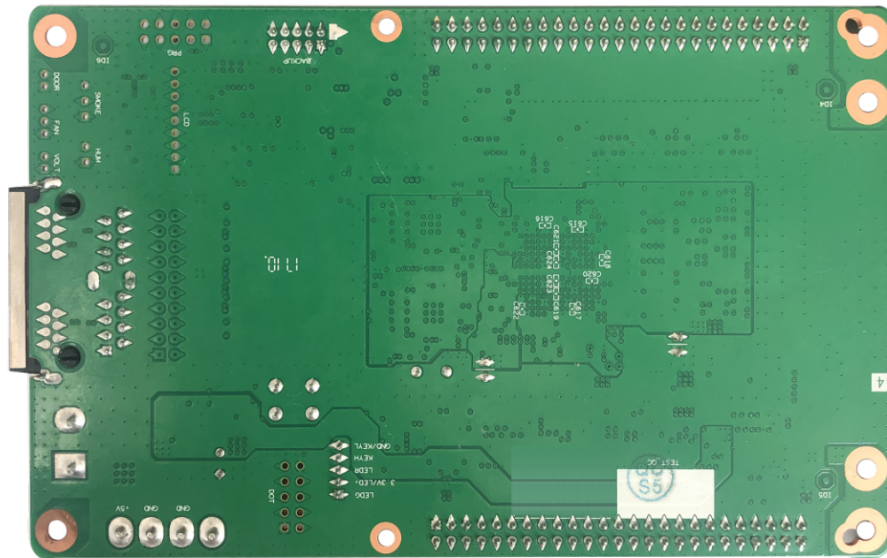
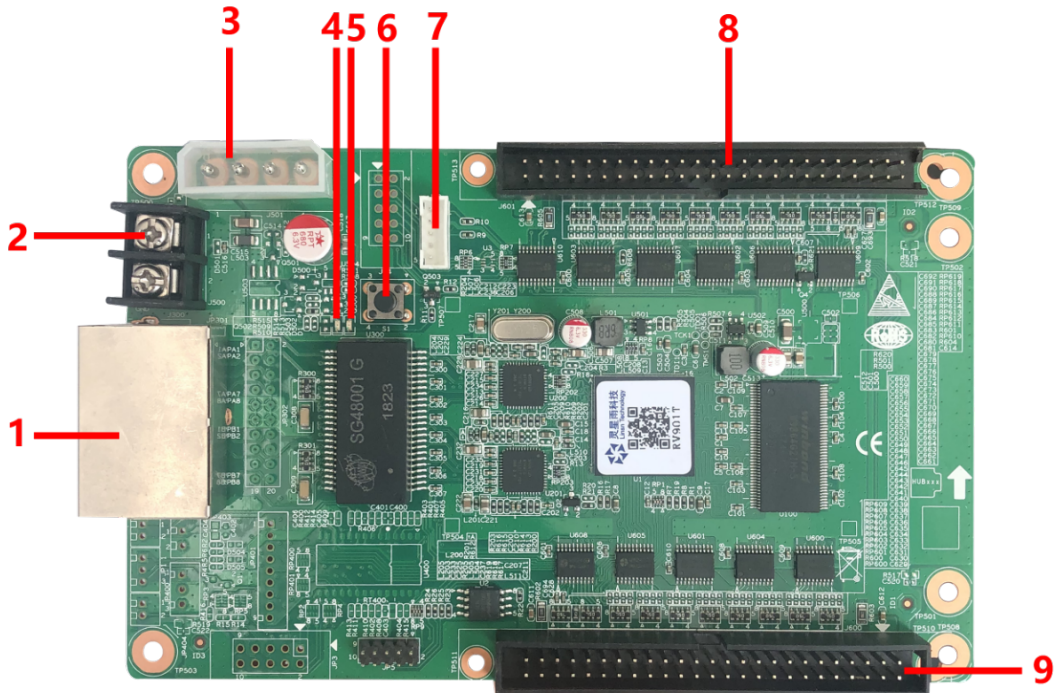
## Overview

RV201 is a standardize product for LED screen manufacturer, and one card supports up to 1024\*256 pixels, and up to 20sets of RCG data and 32 sets of serial data

## Functions and features

1. Single card can output 16 groups of R'GBR' data
2. Single card can output 20 groups of RGB data
3. Single card can output 32 groups of serial data
4. Single card maximum supports 1024X256 pixels (Please note that there are recommended values depending on the design)
5. Support pixel-by-pixel brightness calibration; single-card color space conversion
6. Support network cable BER test
7. High refresh rate and high grey level with most of the driver ICs.

## Appearance



No.	1	2	3	4
Description	Gigabit port	Power connector	Power port	Red power indicator
No.	5	6	7	8/9
Description	Green indicator	Self-test button	Self-test extension port	Module Connector

## Pinouts

### 1. Normal (Default mode)

Support full-color screen, virtual full-color screen and double-color screen, each 50-pin interface has 8 groups of full-color / virtual screen data or 16 groups of two-color screen data.

In normal mode, 50pin is defined as follows.

RGRB' Pinout				Double color pinout			
GND	1	2	VCC	GND	1	2	VCC
GND	3	4	VCC	GND	3	4	VCC
GND	5	6	SR	GND	5	6	SR
R8'	7	8	U8	G16	7	8	R16
G8	9	10	R8	G15	9	10	R15
R7'	11	12	U7	G14	11	12	R14
G7	13	14	R7	G13	13	14	R13
R6'	15	16	U6	G12	15	16	R12
G6	17	18	R6	G11	17	18	R11
R5'	19	20	U5	G10	19	20	R10
G5	21	22	R5	G9	21	22	R9
R4'	23	24	U4	G8	23	24	R8
G4	25	26	R4	G7	25	26	R7

Official website: [www.linsn.com](http://www.linsn.com)

Add: Floor 15&16, Jiajiahao Business Building, No. 10168, Shennan Blvd,  
Nanshan District, Shenzhen

Tel: +86-0755-86183590/ 4008836968

R3'	27	28	U3	G6	27	28	R6
G3	29	30	R3	G5	29	30	R5
R2'	31	32	U2	G4	31	32	R4
G2	33	34	R2	G3	33	34	R3
R1'	35	36	U1	G2	35	36	R2
G1	37	38	R1	G1	37	38	R1
D	39	40	C	D	39	40	C
B	41	42	A	B	41	42	A
LAT	43	44	CLK	LAT	43	44	CLK
OE	45	46	GND	OE	45	46	GND
VCC	47	48	GND	VCC	47	48	GND
VCC	49	50	GND	VCC	49	50	GND

2. 20 groups parallel data mode (20 data for RV901 in  
LedSet/LEDStudioV12.60 or earlier)

Only for full-color screen

In this mode, 50pin is defined as follows

GND	1	2	VCC
GND	3	4	VCC
GND	5	6	SR
NC	7	8	NC
U10	9	10	G10
R10	11	12	U9
G9	13	14	R9
U8	15	16	G8
R8	17	18	U7
G7	19	20	R7
U6	21	22	G6
R6	23	24	U5
G5	25	26	R5
U4	27	28	G4
R4	29	30	U3
G3	31	32	R3
U2	33	34	G2
R2	35	36	U1
G1	37	38	R1
D	39	40	C

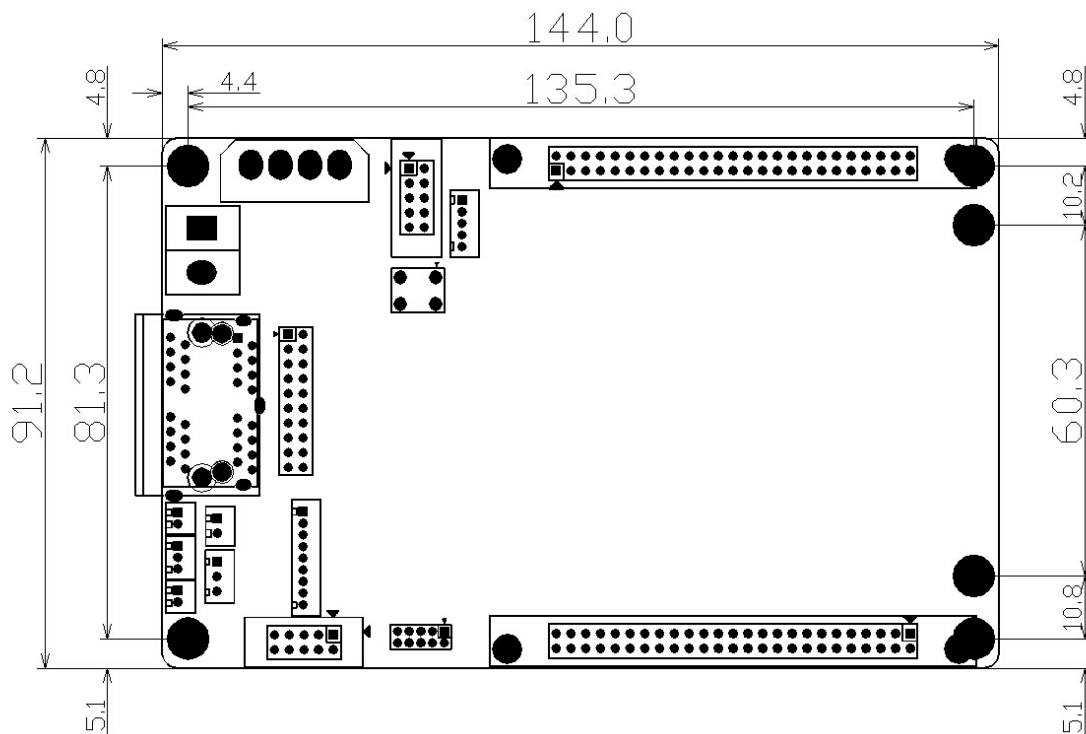
Official website: [www.linsn.com](http://www.linsn.com)

Add: Floor 15&16, Jiajiahao Business Building, No. 10168, Shennan Blvd,  
Nanshan District, Shenzhen

Tel: +86-0755-86183590/ 4008836968

B	41	42	A
LAT	43	44	CLK
OE	45	46	GND
VCC	47	48	GND
VCC	49	50	GND

## Dimension



## Model table

RV201 and RV221 are in stock. RV211H and RV231H need make to order.

Model	RJ45 Direction	output interface type
RV201	90 Degree	interface in front side
RV211	180 Degree	interface in front side

RV221H	90 Degree	interface at the back side
RV231H	180 Degree	interface at the back side

## Specifications

Capacity	1024X256 Pixels	
Power	Input Voltage	DC4.5V ~ 5.5V
	Rated power consumption	4W
Working Environment	Temperature	-20°C ~ 70°C
	Humidity	0% ~ 95%
Physical Dimensions	Dimensions	144.0 X 91.2 mm
	Weight	90g
Packing Info	Packing	Each card packed with small red foam bag, and 100pcs per carton
	Carton Dimension	622.0mm × 465.0mm × 176.0mm
	Carton Weight	11.8 kg

END