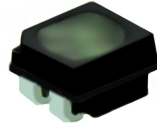


P1.5625 Indoor 200x150 Flexible Soft LED Display

Module Specification

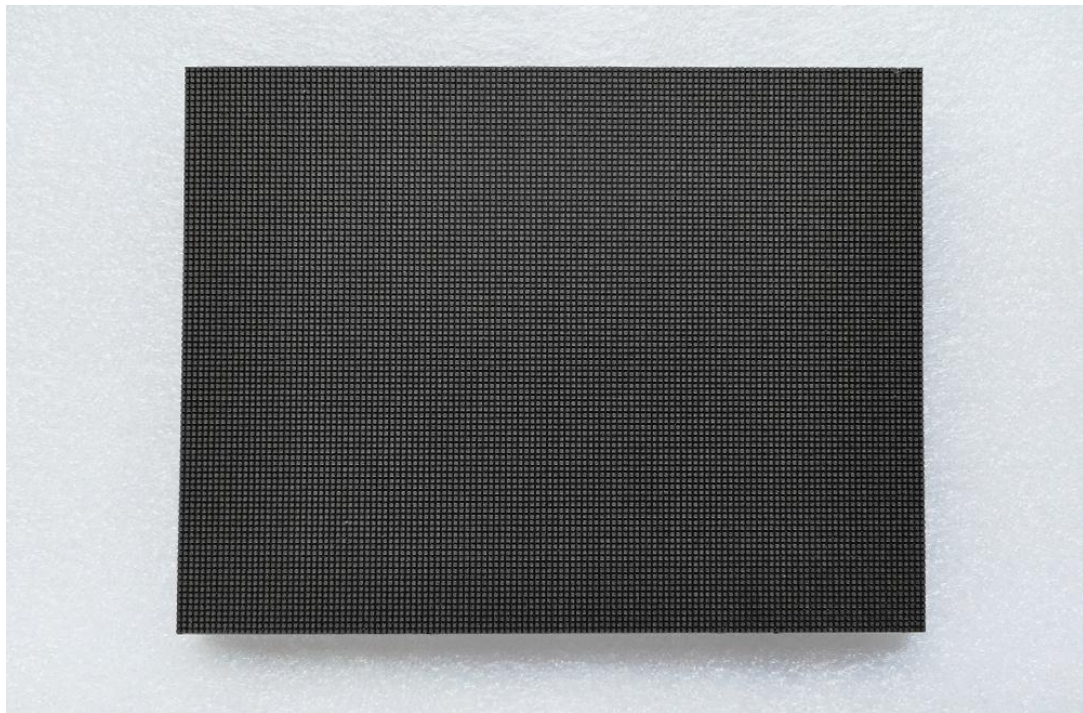
Model No.: P1.5625-ISF32S-SMD1010-128x96

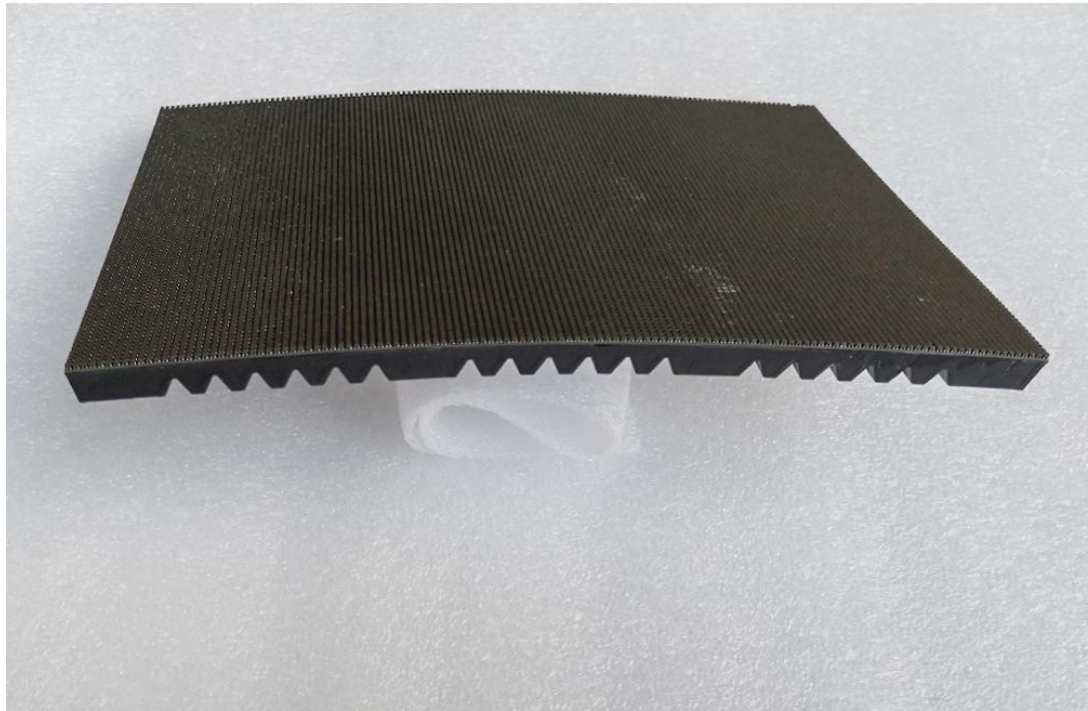
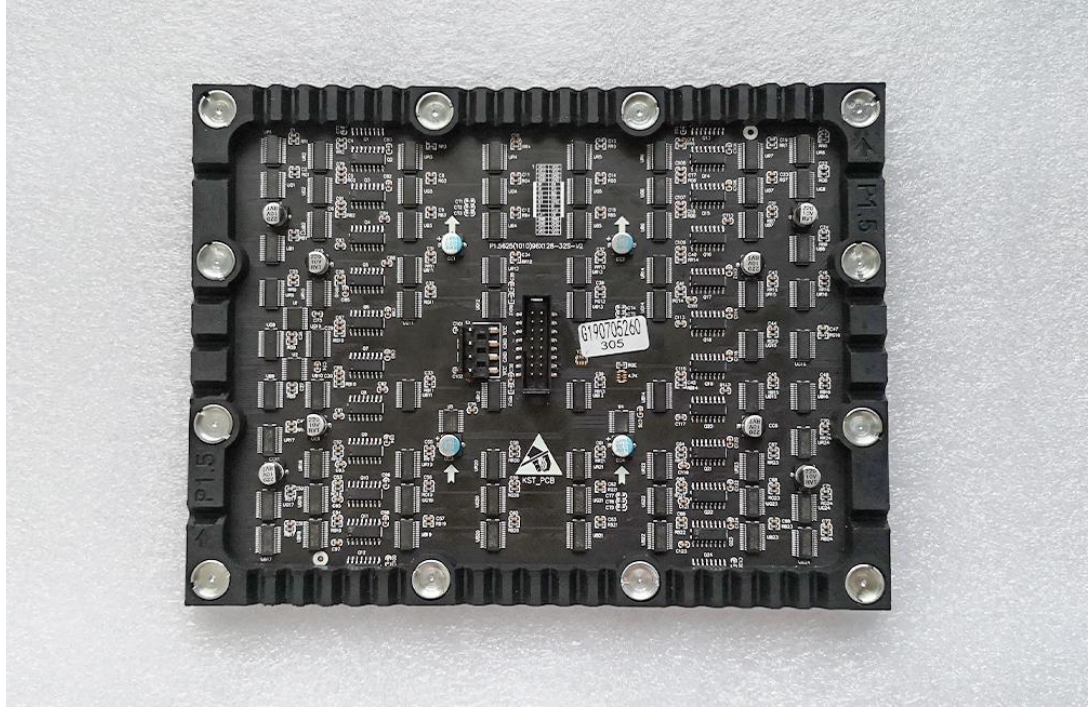
LED Lamp Specification



Color	Package	Intensity	Viewing Angle	Wavelength	Testing Conditions
Red	SMD1010	20mcd	120°/120°	620nm	25°C,5mA
Green		30mcd	120°/120°	530nm	25°C,2mA
Blue		5mcd	120°/120°	470nm	25°C,2mA

Module Photo







Module Parameter

Pixel Pitch	1.5625mm
Pixel Configuration	SMD1010
Density	409,600pixels/m ²
Module Resolution	128pixel(L) * 96pixel(H)
Module Dimension	200mm(L) * 150mm(H) * 6.5mm(D)
Driving Mode	Constant current, 1/32 duty

Electricity Parameter

Optical Ratings

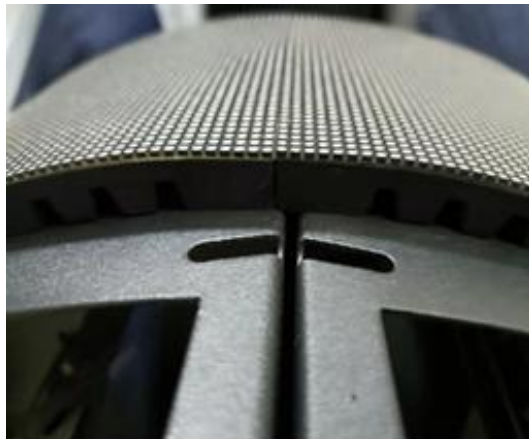
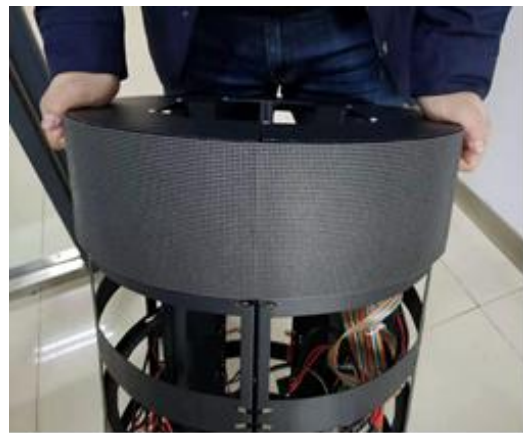
Brightness	≥1000 cd/m ²
Viewing Angle	120°(Horizontal); 120°(Vertical)
Best Viewing Distance	≥1.5m
Gray Grade	14 bits
Display Color	4.4 trillion colors
Brightness Adjustment	100 grades by software or automatically by sensor
Max. Power Consumption	15W

Control System

Frame Frequency	≥60Hz
Refresh Frequency	≥1920Hz
Input Signal	Composite Video, S-video, DVI, HDMI, SDI, HD-SDI
Control Distance	100m(Ethernet cable);

	20KM(optical fiber cable)
Support VGA Mode	800*600, 1024*768, 1280*1024, 1600*1200
Color Temperature	5000—9300 adjustable
Brightness Correction	Pixel by pixel, module by module, cabinet by cabinet
Reliability	
Working Temperature	-20~+60 °C
Storage Temperature	-30~+70 °C
Working Humidity	10%~90% RH
Lifetime	100,000 hours
MTBF	5000 hours
Continuous Operating Time	≥72 hours
Protection Grade	IP31
Out-of-Control Pixel Rate	≤0.01%

Assembly diagram



Application

