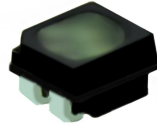


## P1.579 240x120mm Indoor Flexible Soft LED Display

### Module Specification

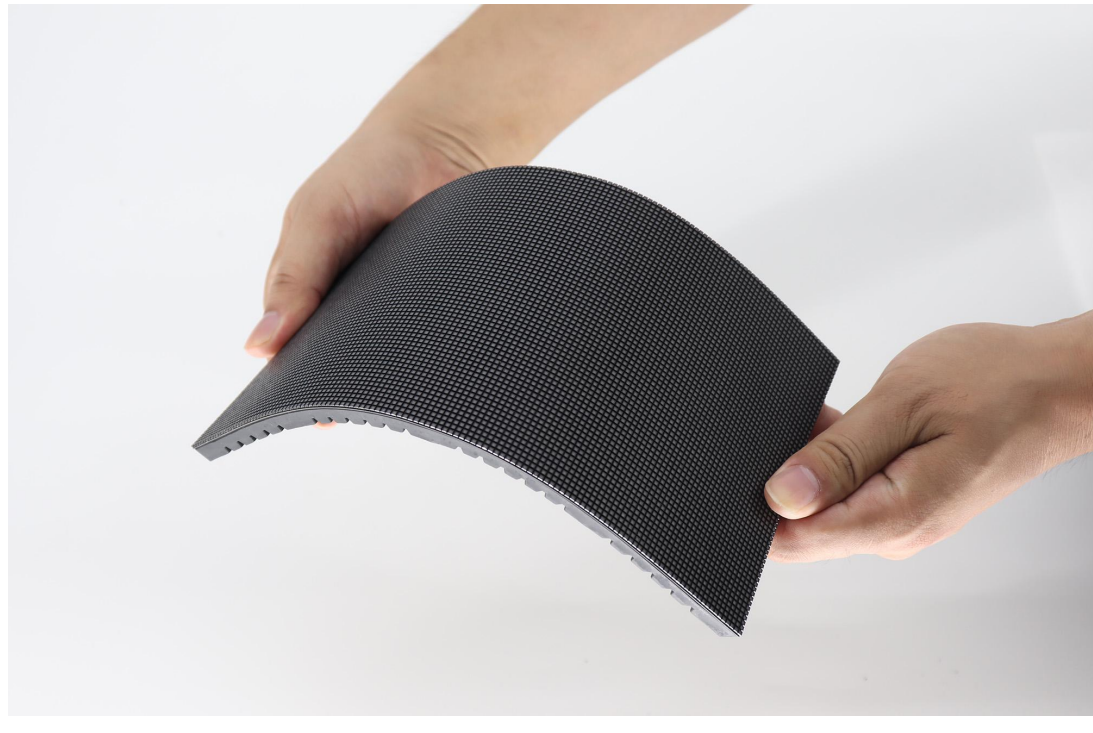
Model No.: **P1.579-ISF38S-SMD1010-152x76-E**

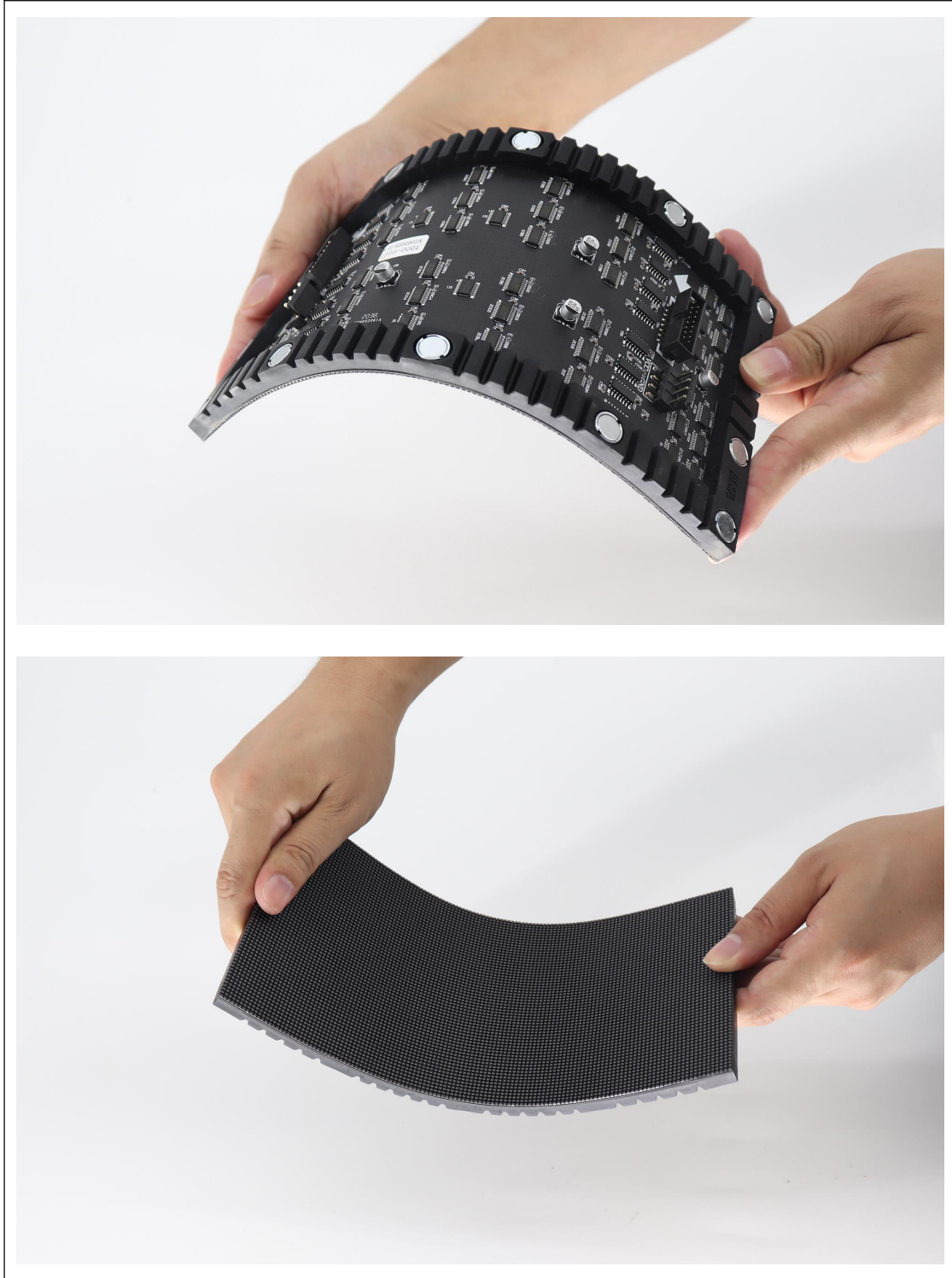
#### LED Lamp Specification

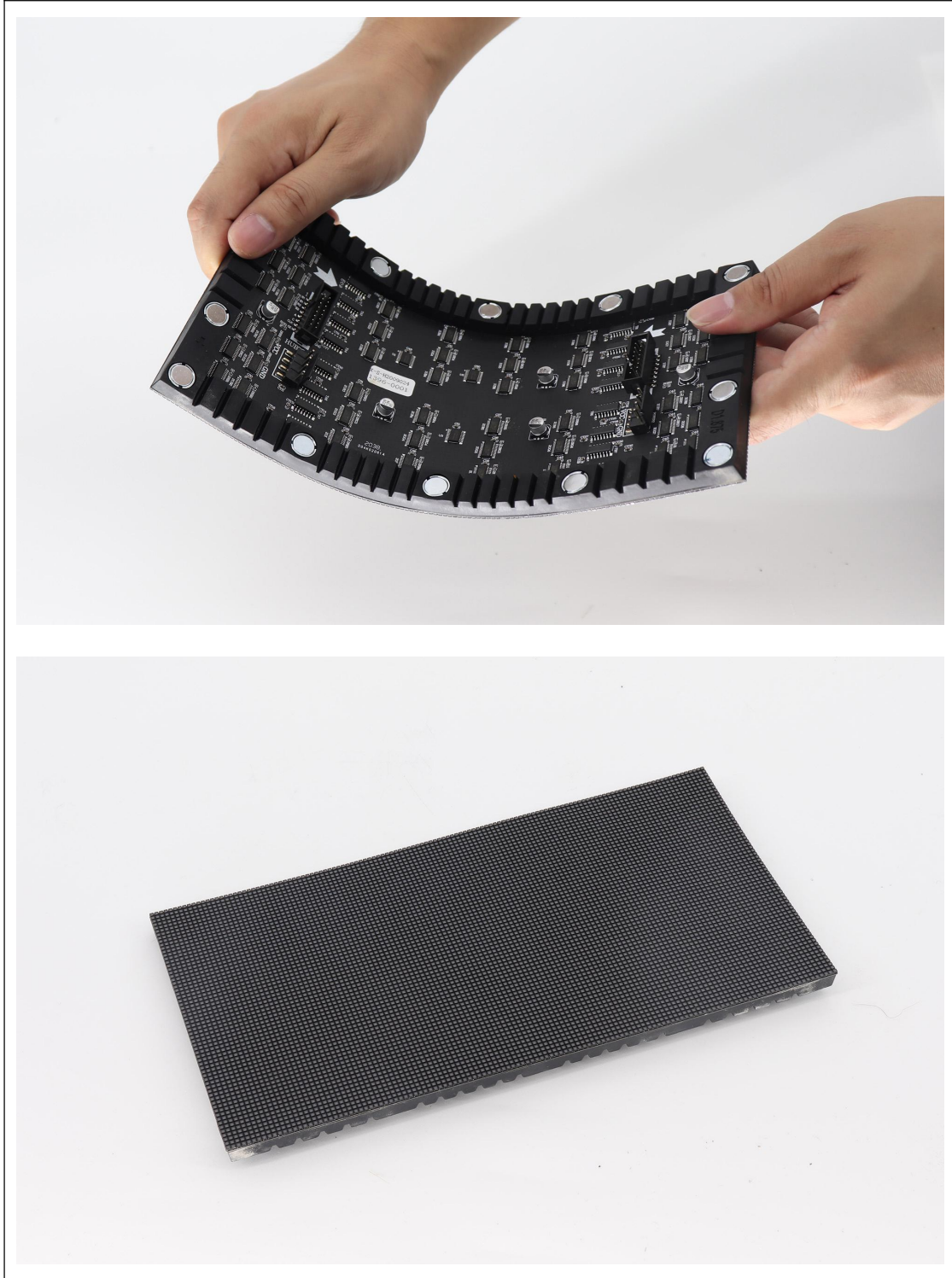


Color	Package	Intensity	Viewing Angle	Wavelength	Testing Conditions
Red	SMD1010	10-22mcd	120°	620-625nm	25°C, 5mA
Green		30-80mcd	120°	515-535nm	25°C, 3mA
Blue		4.5-9.9mcd	120°	460-475nm	25°C, 2mA

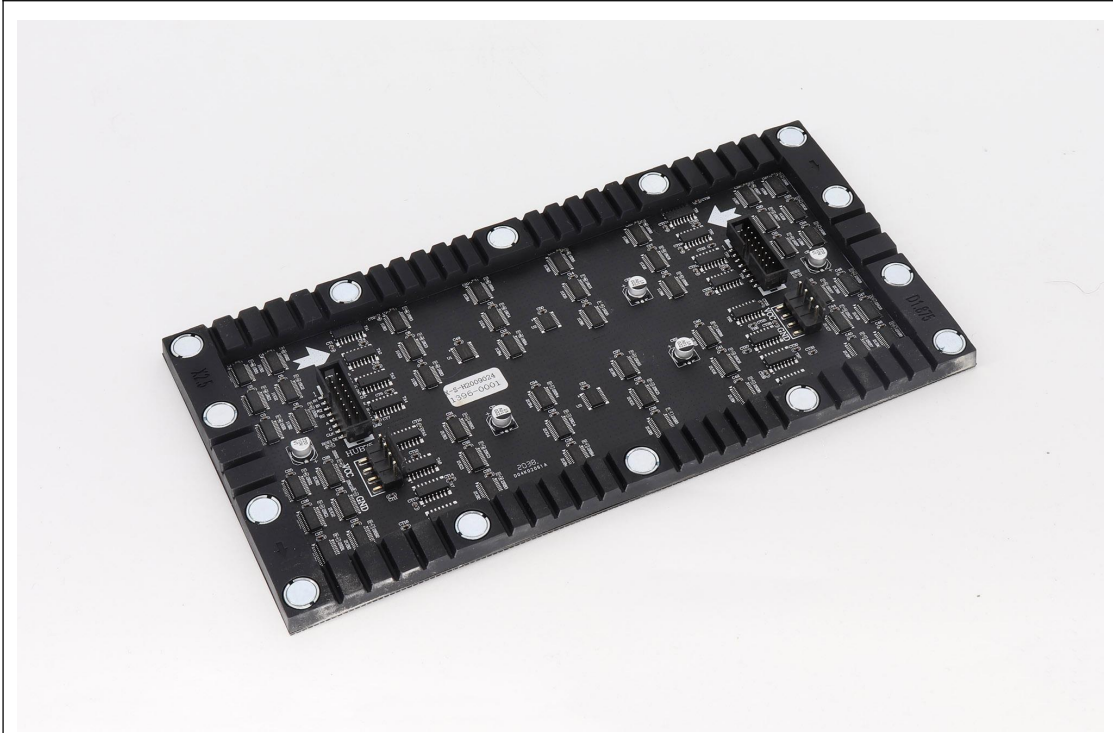
#### Module Photo











### Module Parameter

Pixel Pitch	1.579mm
Pixel Configuration	SMD1010
Density	401,084 pixels/m <sup>2</sup>
Module Resolution	152pixel(L) * 76pixel(H)
Module Dimension	240mm(L) * 120mm(H) * 8.5mm(D)
Driving Mode	Constant current, 1/38 duty

### Electricity Parameter

#### Optical Ratings

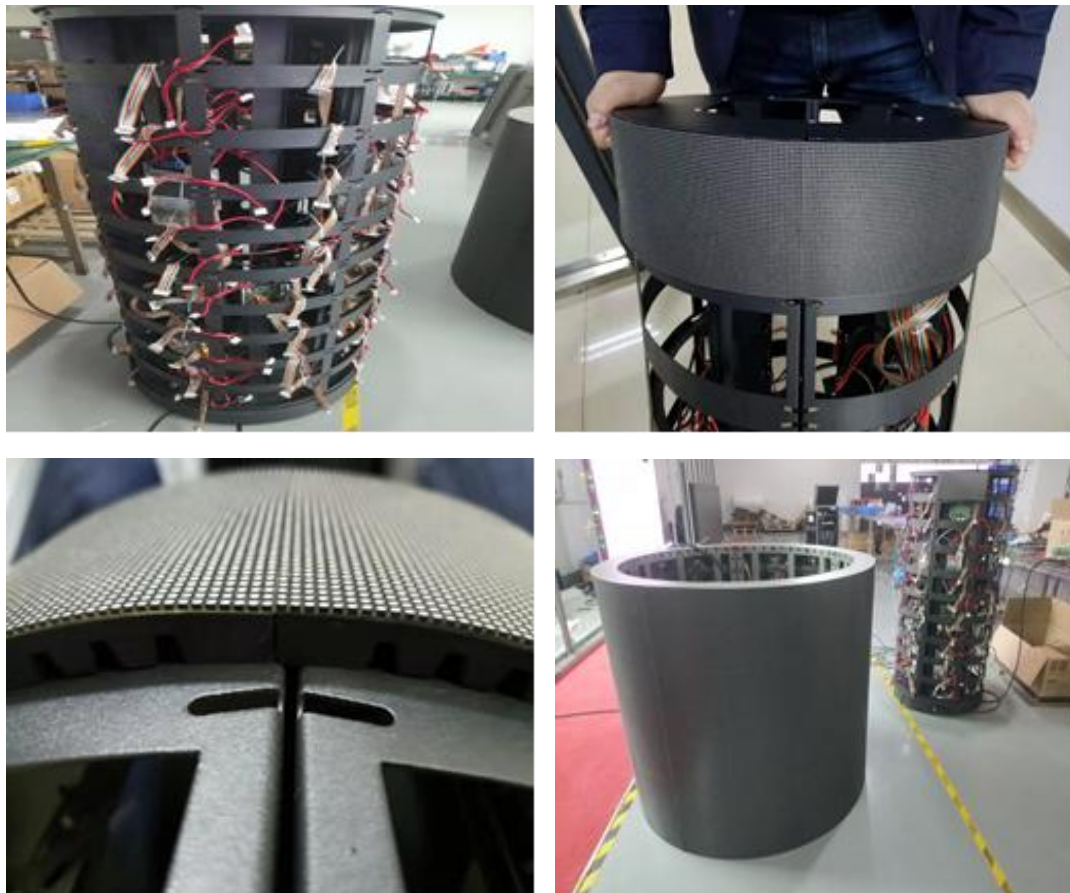
Brightness	≥800 cd/m <sup>2</sup>
Viewing Angle	140°(Horizontal); 120°(Vertical)
Best Viewing Distance	≥1.6m
Gray Grade	14 bits
Display Color	4.4 trillion colors
Brightness Adjustment	100 grades by software or automatically by sensor
Max. Power Consumption	15 W

#### Control System

Frame Frequency	≥60Hz
Refresh Frequency	≥3,840Hz
Input Signal	Composite Video, S-video, DVI, HDMI, SDI, HD-SDI
Control Distance	100m(Ethernet cable); 20KM(optical fiber cable)
Support VGA Mode	800*600, 1024*768, 1280*1024, 1600*1200
Color Temperature	5000—9300 adjustable

Brightness Correction	Pixel by pixel, module by module, cabinet by cabinet
<b>Reliability</b>	
Working Temperature	-20~+60 °C
Storage Temperature	-30~+70 °C
Working Humidity	10%~90% RH
Lifetime	100,000 hours
MTBF	5000 hours
Continuous Operating Time	≥72 hours
Protection Grade	IP31
Out-of-Control Pixel Rate	≤0.01%

**Assembly diagram**



**Application**



