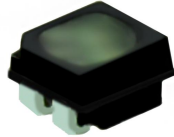


P2 SMD1515 Indoor 640x1920mm Rear Service Poster LED Display

Model No.: **P2-IRP40S-SMD1515-160x80-L640xH1920**

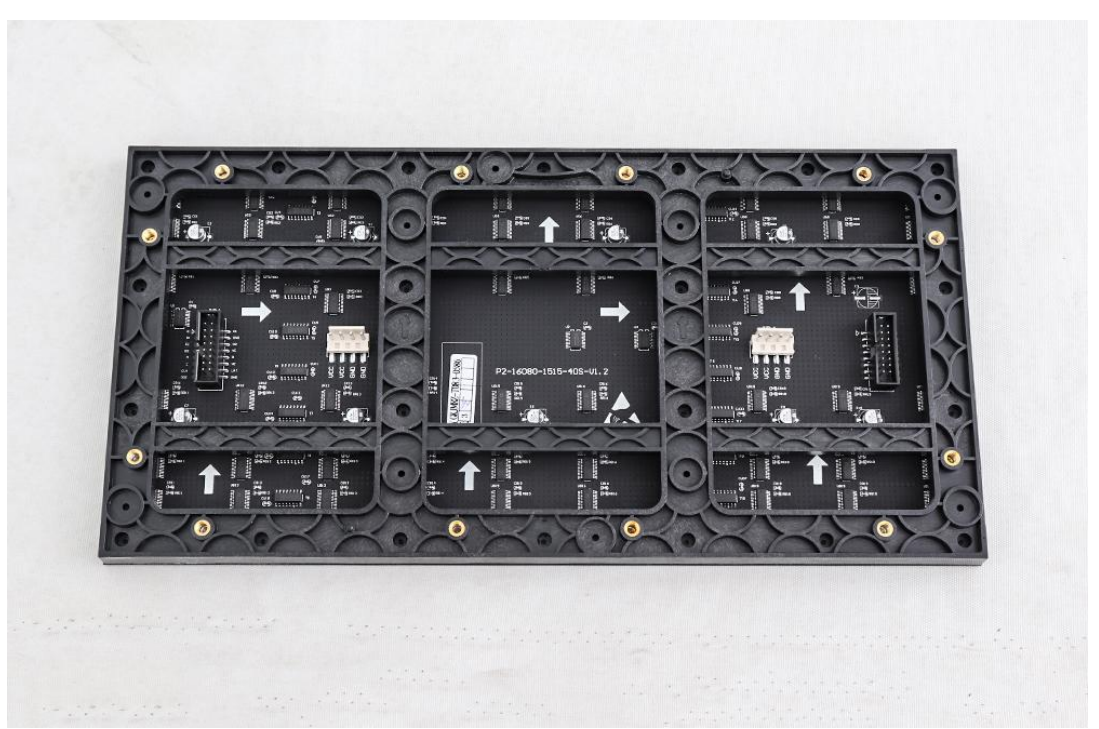
LED Lamp Specification



Color	Package	Intensity	Viewing Angle	Wavelength	Testing Conditions
Red	SMD1515	38-50mcd	120°	618-623nm	25°C, 8mA
Green		150-195mcd	120°	519-523nm	25°C, 5mA
Blue		19-25mcd	120°	467-471nm	25°C, 3mA

Module Photo

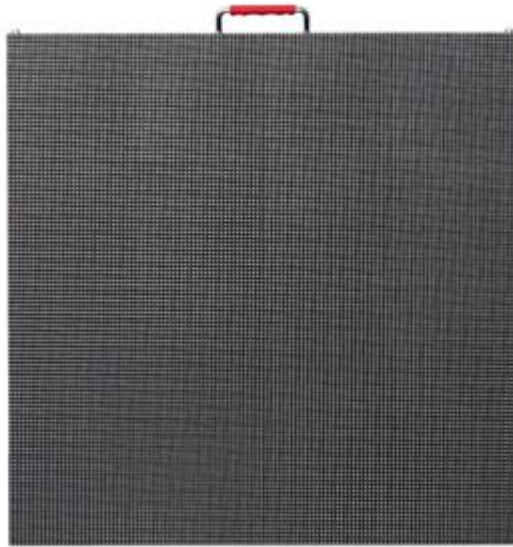




Module Parameter

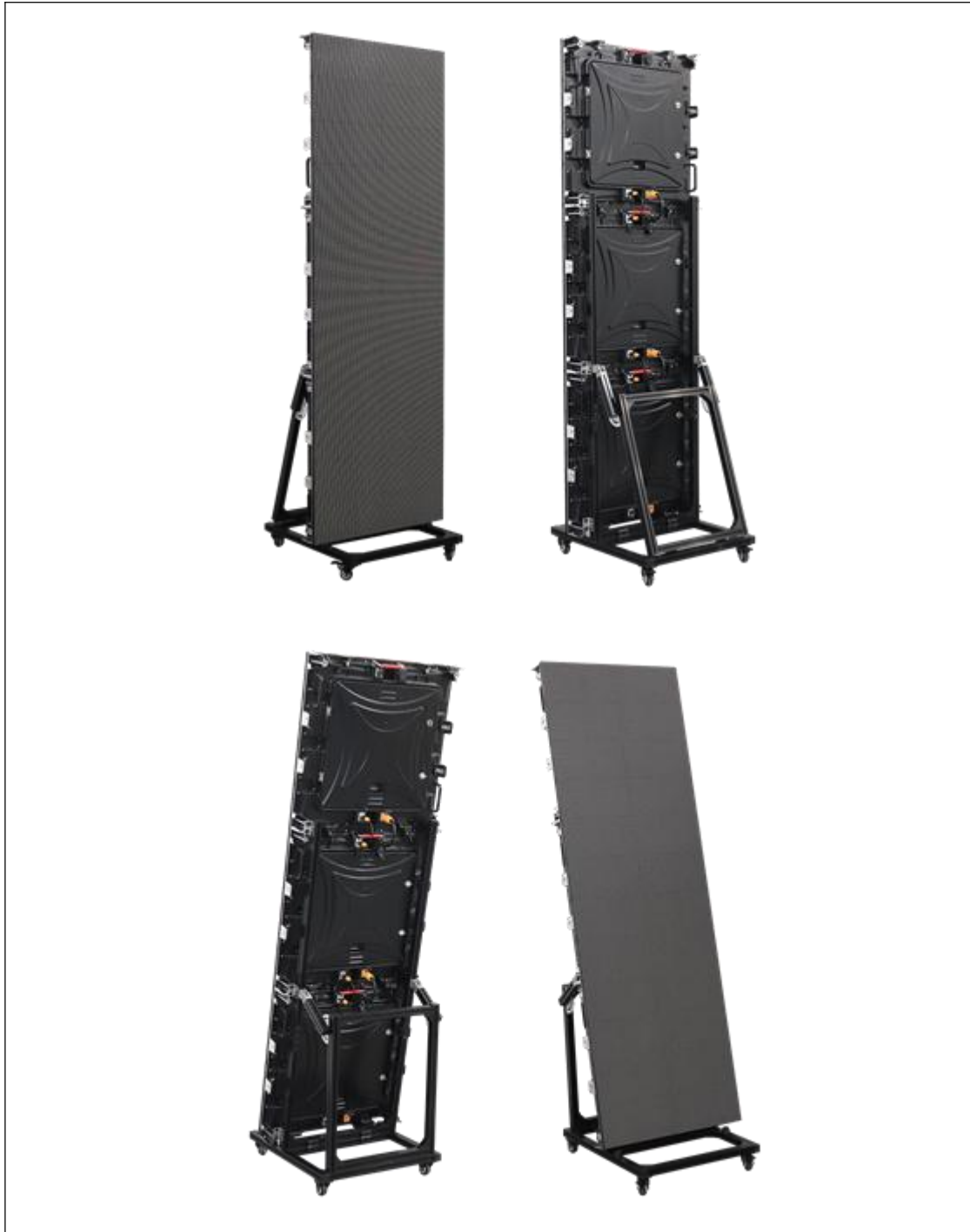
Pixel Pitch	2mm
Pixel Configuration	SMD1515
Density	250,000 pixels/m ²
Module Resolution	160pixel(L) *80pixel(H)
Module Dimension	320mm(L) * 160mm(H) * 18mm(D)
Driving Mode	Constant current, 1/40 duty

LED Cabinet



Module Quantity in a Cabinet	2(L) *4(H)
Cabinet Dimension	640(L) *640(H) * 90(D)mm
Cabinet Resolution	320(L) * 320(H)
Cabinet Material	Die-cast aluminum
Cabinet Weight	≈9KG

Poster Screen



Cabinet Quantity of Whole the Screen	1(L) *3(H)
Display Size	640(L)*1920(H)mm
Screen Dimension (Structure included)	650(L)*640(W)* 2040(H)mm
Screen Resolution	320(L) * 960(H)
Screen Weight	≈36.5KG
Adjustable Angle of Structure	From 80° to 90°

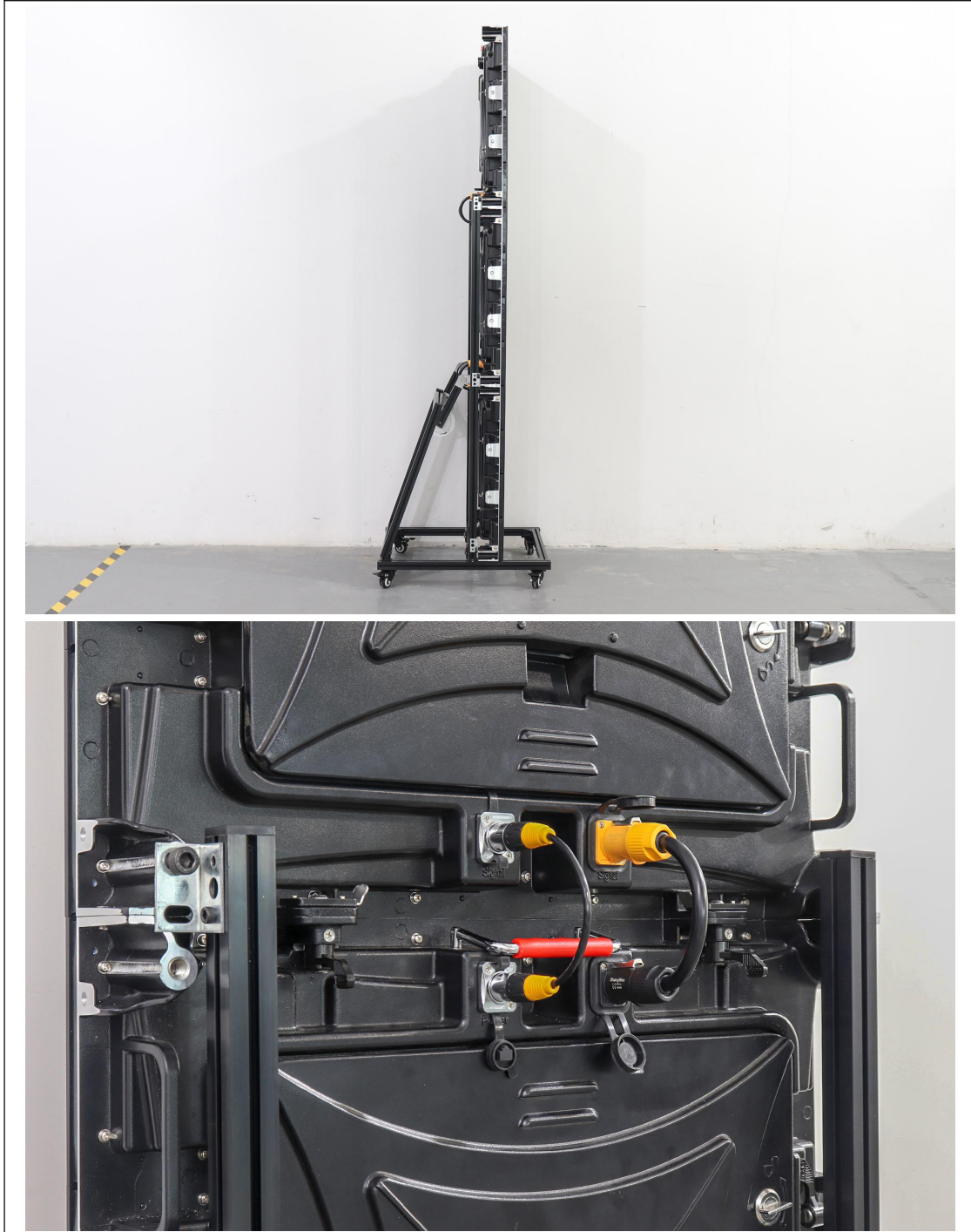
Packaging

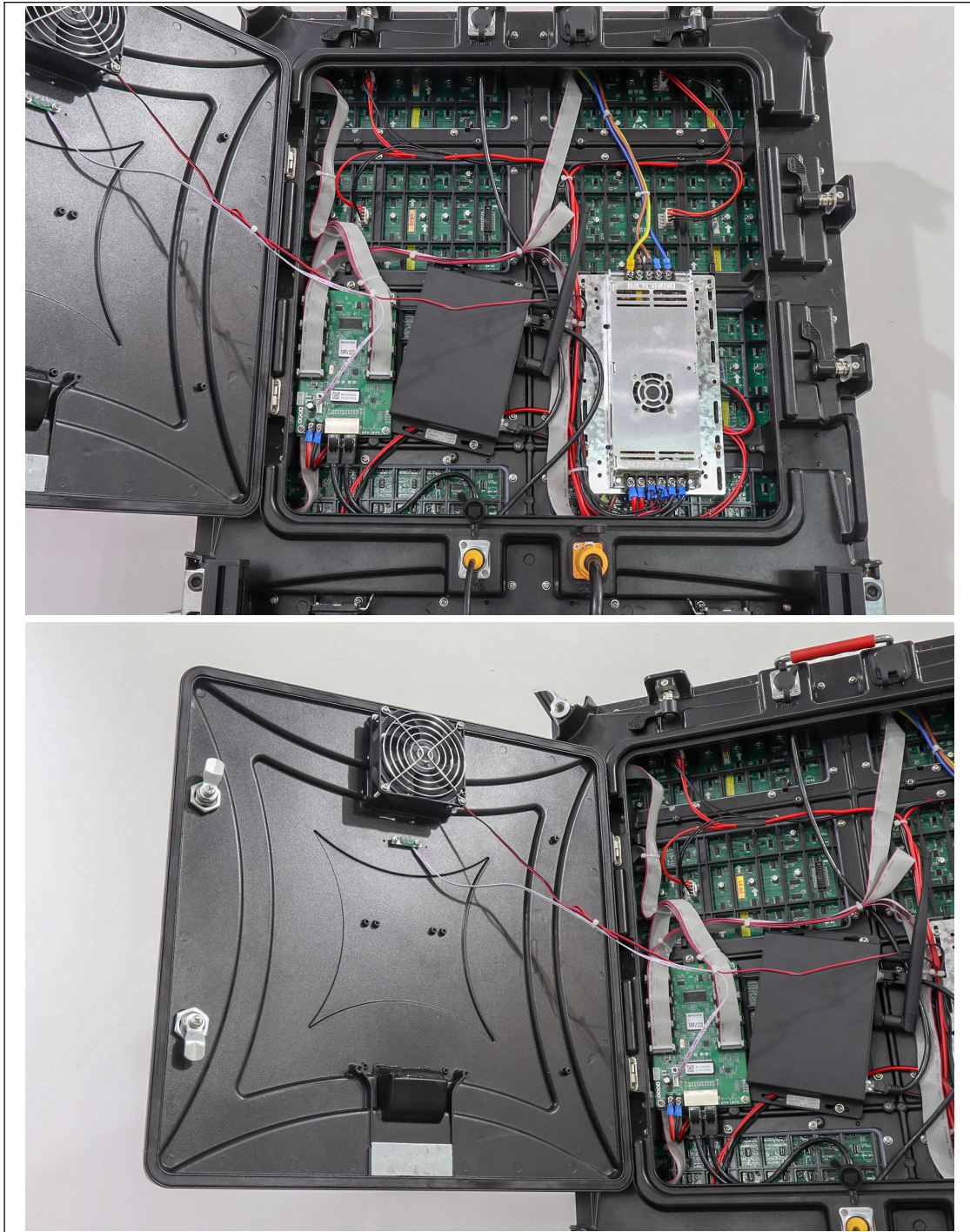


Packing Method	Cabinets, structure and all parts are packed into one case
Packing Box Style	Flight case with wheels
Packing Box Dimension	740(L)*590(W)*890(H)mm
Total Volume	≈0.39CBM
Gross Weight	≈69.5KG
Electricity Parameter	
Optical Ratings	
Brightness	≥800 cd/m ²

Viewing Angle	120°(Horizontal); 120°(Vertical)
Best Viewing Distance	≥2m
Gray Level	14 bits
Display Color	4.4 trillion colors
Brightness Adjustment	100 grades by software or automatically by sensor
Operation Power	AC100-240V 50-60Hz Switchable
Max. Power Consumption	439 W/m ²
Avg. Power Consumption	150 W/m ²
Control System	
Frame Frequency	≥60Hz
Refresh Frequency	≥1,920Hz
Input Signal	Composite Video, S-video, DVI, HDMI, SDI, HD-SDI
Control Distance	50M (WIFI); 100M (Ethernet cable); 20KM (Optical fiber cable)
Support VGA Mode	800*600, 1024*768, 1280*1024, 1600*1200
Color Temperature	5000—9300 adjustable
Brightness Correction	Pixel by pixel, module by module, cabinet by cabinet
Reliability	
Working Temperature	-20~+60 °C
Storage Temperature	-30~+70 °C
Working Humidity	10%~90% RH
Lifetime	100,000 hours
MTBF	5000 hours
Continuous Operating Time	≥72 hours
Protection Grade	IP31
Out-of-Control Pixel Rate	≤0.01%
Screen Details	













Angle adjustment

