

P2.5 Indoor SMD2121 640x640mm Die-Cast Aluminum Rental LED Display

Model No.: **P2.5-IR32S-SMD2121-128x64-L640xH640**

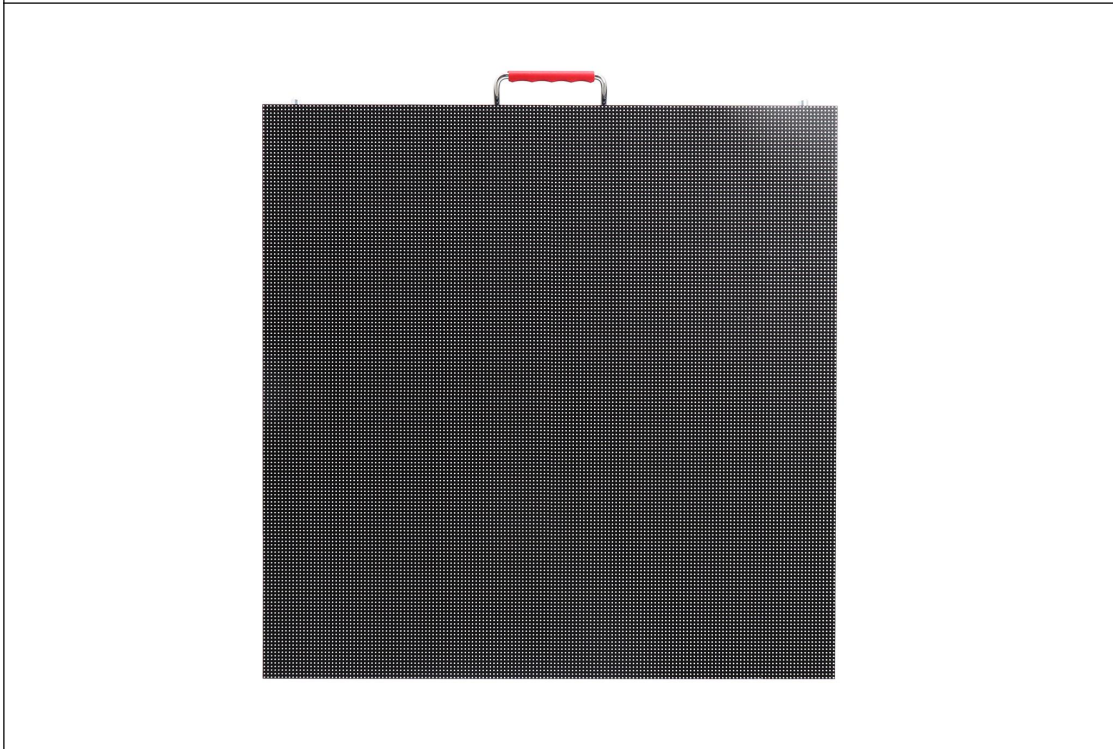
Module Parameter	
Pixel Pitch	2.5mm
Pixel Configuration	SMD2121
Density	160,000 pixels/m ²
Module Resolution	128pixel(L) *64pixel(H)
Module Dimension	320mm(L) * 160mm(H) * 18mm(D)
Driving Mode	Constant current, 1/32 duty

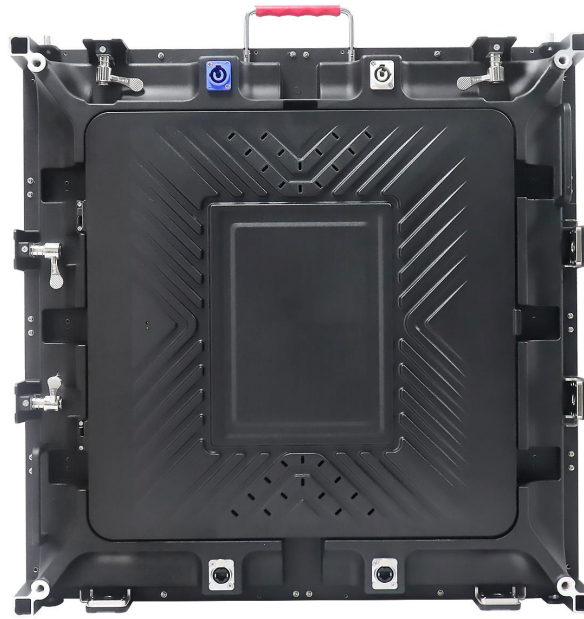
Module Photo





LED Cabinet

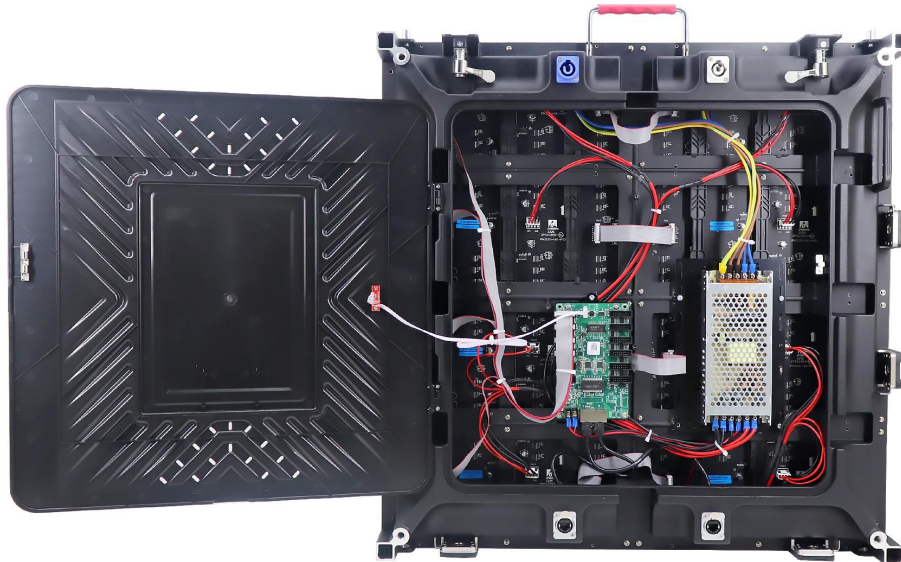




Module Quantity in a Cabinet	2(L) *4(H)
Cabinet Dimension	640 (L) *640 (H) * 80(D)mm
Cabinet Resolution	256 pixel(L) * 256 pixel(H)
Cabinet Material	Die-cast aluminum
Cabinet Weight	≈9KG
Electricity Parameter	
Optical Ratings	
Brightness	≥1,000 cd/m ²
Viewing Angle	140°(Horizontal); 140°(Vertical)
Best Viewing Distance	≥2.5m
Gray Grade	14 bits
Display Color	4.4 trillion colors
Brightness Adjustment	100 grades by software or automatically by sensor
Operation Power	AC100-240V 50-60Hz Switchable
Max. Power Consumption	457 W/m ²
Avg. Power Consumption	153 W/m ²
Control System	
Frame Frequency	≥60Hz
Refresh Frequency	1920Hz / 3840Hz
Input Signal	Composite Video, S-video, DVI, HDMI, SDI, HD-SDI
Control Distance	100m(Ethernet cable); 20KM(optical fiber cable)
Support VGA Mode	800*600, 1024*768, 1280*1024, 1600*1200
Color Temperature	5000—9300 adjustable

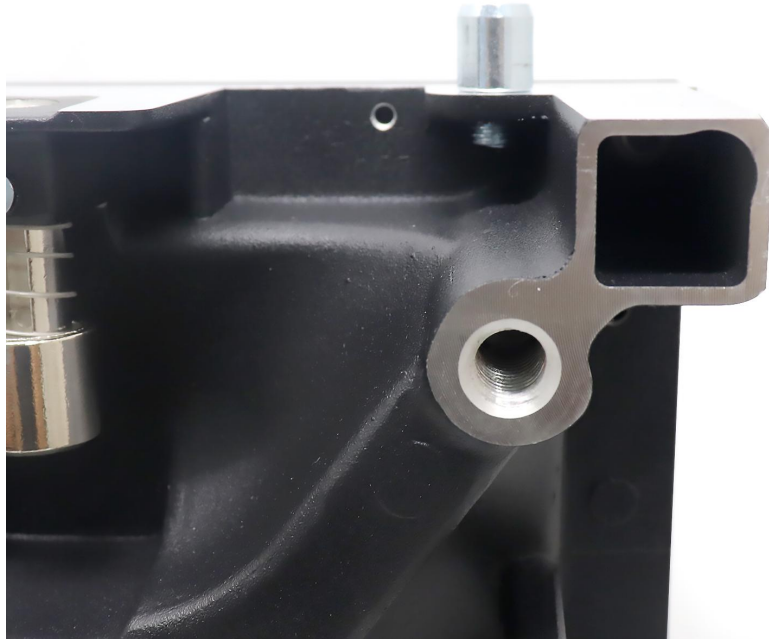
Brightness Correction	Pixel by pixel, module by module, cabinet by cabinet
Reliability	
Working Temperature	-20~+60 °C
Storage Temperature	-30~+70 °C
Working Humidity	10%~90% RH
Lifetime	100,000 hours
MTBF	5000 hours
Continuous Operating Time	≥72 hours
Protection Grade	IP31
Out-of-Control Pixel Rate	≤0.01%

Cabinet Details











Package

