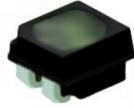


## P2.5 Outdoor SMD1415 160x160mm LED Module

### Specification

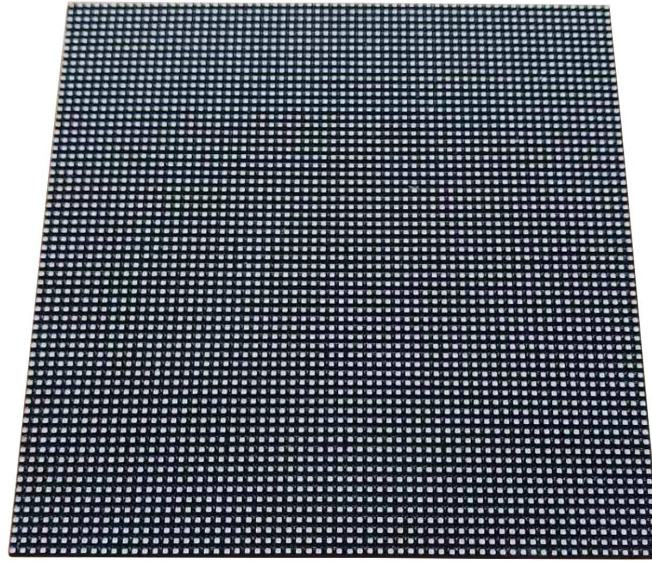
Model No.: **P2.5-O16S-SMD1415-64x64-E**

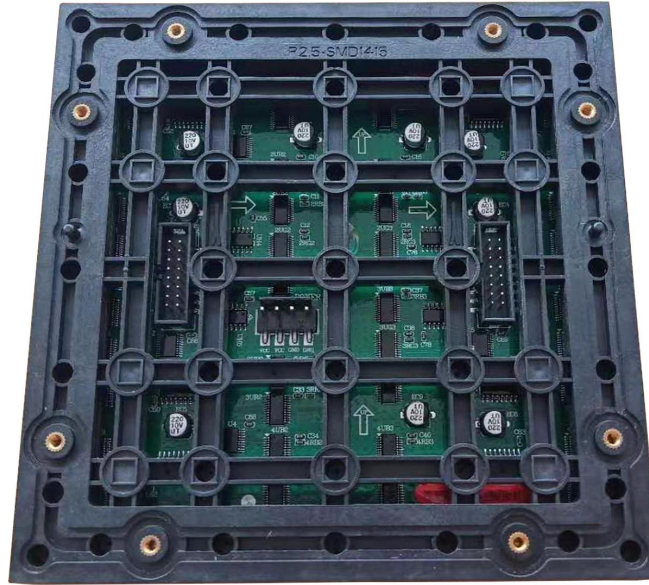
#### LED Lamp Specification



Color	Package	Intensity	Viewing Angle	Wavelength	Testing Conditions
Red	SMD1415	250-550mcd	120°/120°	620-625nm	25°C, 15mA
Green		400-800mcd	120°/120°	510-535nm	25°C, 8mA
Blue		50-120mcd	120°/120°	458-475nm	25°C, 5mA

#### Module Photo





### Module Parameter

Pixel Pitch	2.5mm
Pixel Configuration	SMD1415
Density	160,000 pixels/m <sup>2</sup>
Module Resolution	64pixel(L) * 64pixel(H)
Module Dimension	160mm(L) * 160mm(H) * 25mm(D)
Driving Mode	Constant current, 1/16 duty
Module Mask	Pure black mask--high contrast screen

### Electricity Parameter

#### Optical Ratings

Brightness	≥5,000 CD/m <sup>2</sup>
Viewing Angle	120°(Horizontal); 120°(Vertical)
Best Viewing Distance	≥2.5m
Gray Grade	14 bit
Display Color	4.4 trillion colors
Brightness Adjustment	100 grades by software or automatically by sensor
Max. Power Consumption	16 W

#### Control System

Frame Frequency	≥60Hz
Refresh Frequency	≥3,840Hz
Input Signal	Composite Video, S-video, DVI, HDMI, SDI, HD-SDI
Control Distance	100M (Ethernet cable); 20KM (Optical fiber cable)

Support VGA Mode	800*600, 1024*768, 1280*1024, 1600*1200
Color Temperature	5000—9300 adjustable
Brightness Correction	Pixel by pixel, module by module, cabinet by cabinet
<b>Reliability</b>	
Working Temperature	-20~+60 °C
Storage Temperature	-30~+70 °C
Working Humidity	10%~90% RH
Lifetime	100,000 hours
MTBF	5000 hours
Continuous Operating Time	≥72 hours
Protection Grade	IP65
Out-of-Control Pixel Rate	≤0.01%

**Package**

