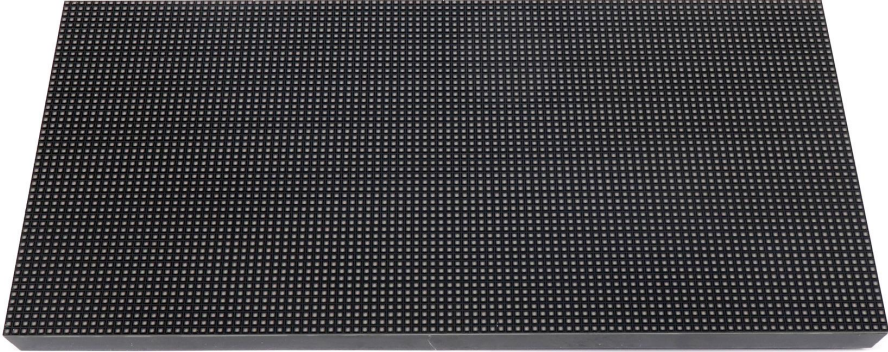


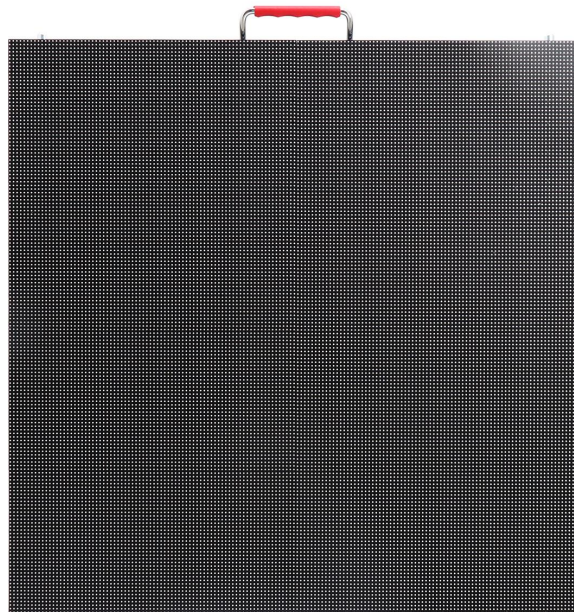
## P3.076 Indoor 640x640mm Die-Cast Aluminum Rental LED Display

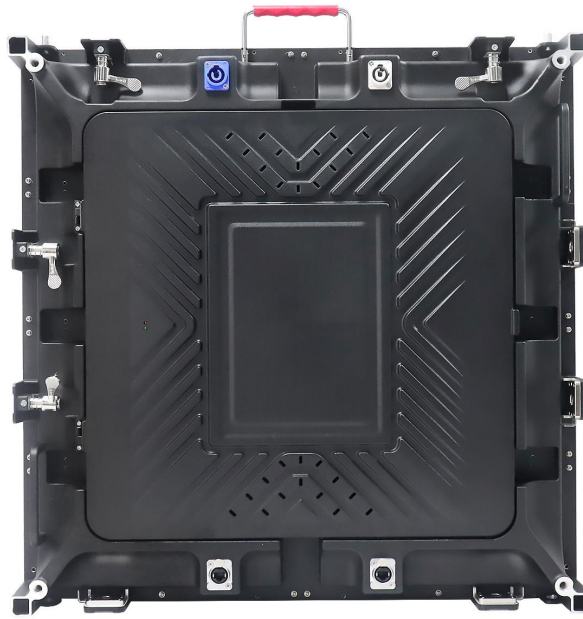
Model No.: **P3.076-IR26S-SMD2121-104x52-L640xH640**

<b>Module Parameter</b>	
Pixel Pitch	3.076mm
Pixel Configuration	SMD2121
Density	105,689 pixels/m <sup>2</sup>
Module Resolution	104pixel(L) * 52pixel(H)
Module Dimension	320mm(L) * 160mm(H) * 18mm(D)
Driving Mode	Constant current, 1/26 duty
Module Mask	Pure black mask---high contrast screen
<b>Module Photo</b>	
	



**LED Cabinet**

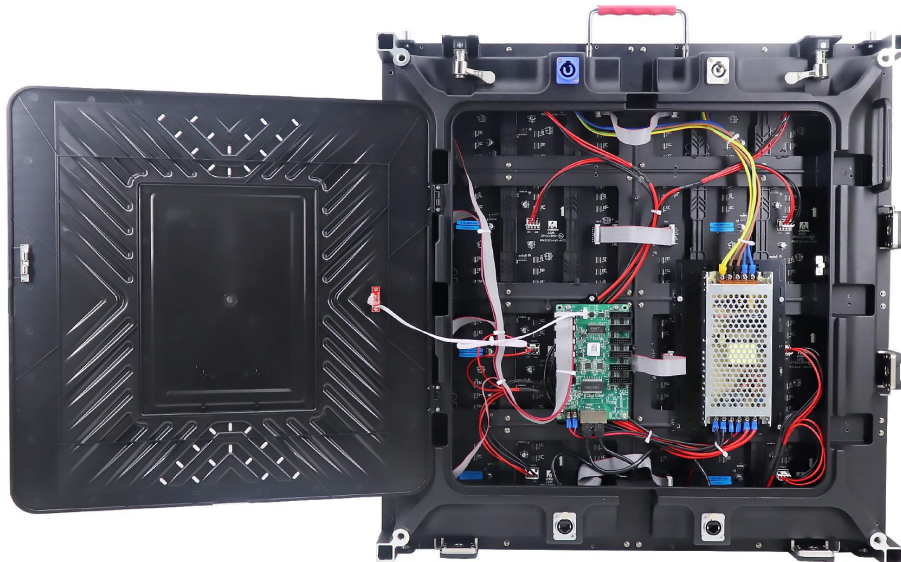




Module Quantity in a Cabinet	2(L) *4(H)
Cabinet Dimension	640(L)*640(H) * 80(D)mm
Cabinet Resolution	208(L) * 208(H)
Cabinet Material	Die-cast aluminum;
Cabinet Weight	≈9KG
<b>Electricity Parameter</b>	
<b>Optical Ratings</b>	
Brightness	≥1000 cd/m <sup>2</sup>
Viewing Angle	140°(Horizontal); 140°(Vertical)
Best Viewing Distance	≥3m
Gray Grade	14 bits
Display Color	4.4 trillion colors
Brightness Adjustment	100 grades by software or automatically by sensor
Operation Power	AC100-240V 50-60Hz Switchable
Max. Power Consumption	413 W/m <sup>2</sup>
Avg. Power Consumption	138 W/m <sup>2</sup>
<b>Control System</b>	
Frame Frequency	≥60Hz
Refresh Frequency	≥1920Hz / 3840Hz
Input Signal	Composite Video, S-video, DVI, HDMI, SDI, HD-SDI
Control Distance	100m(Ethernet cable); 20KM(optical fiber cable)
Support VGA Mode	800*600, 1024*768, 1280*1024, 1600*1200

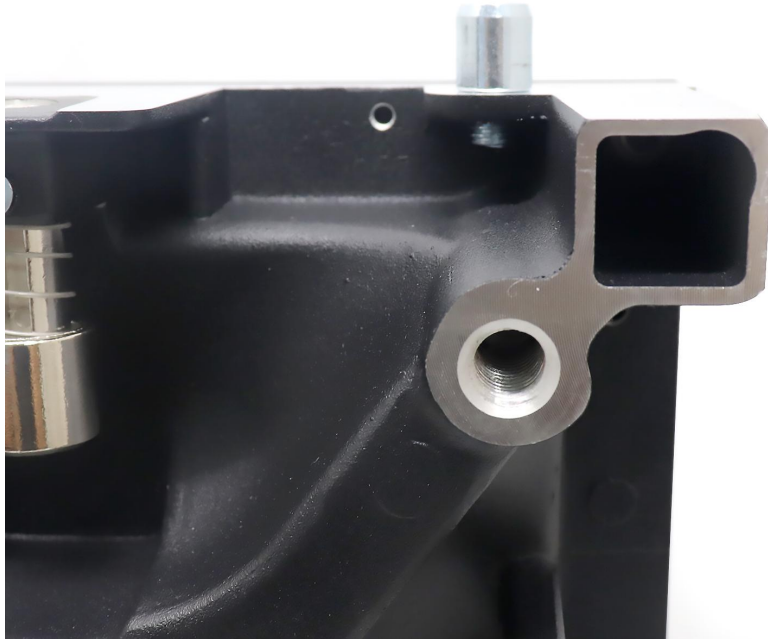
Color Temperature	5000—9300 adjustable
Brightness Correction	Pixel by pixel, module by module, cabinet by cabinet
<b>Reliability</b>	
Working Temperature	-20~+60 °C
Storage Temperature	-30~+70 °C
Working Humidity	10%~90% RH
Lifetime	100,000 hours
MTBF	5000 hours
Continuous Operating Time	≥72 hours
Protection Grade	IP31
Out-of-Control Pixel Rate	≤0.01%

### Cabinet Details













**Package**

