

Receiver RV902

V1.1
Jan 2018

1. Function



- 1) Single card can output 16 groups serial data;
- 2) Single card can output 4 groups R'GBR' data;
- 3) Single card can output 5 groups RGB data;
- 1) Single card maximum supports 1024X256 pixels (Please note that there are recommended values depending on the design)

Official website: www.linsn.com

Add: Floor 15&16, Jiayahao Business Building, No. 10168, Shennan Blvd,
Nanshan District, Shenzhen

Tel: +86-0755-86183590/ 4008836968

of LED screen) ;

- 5) Support pixel-by-pixel brightness calibration; single-card color space conversion;
- 6) Support network cable BER test;
- 7) High refresh rate and high grey level with most of the driver ICs;
- 8) In line with EU standards RoHS;
- 9) In line with EU standards CE-EMC class B.

2.RV902 PINOUT

- 1) Normal mode (default mode)

Support full-color screen and double-color display, 26-pin interface has 16 groups of full-color screen serial-data; 16-pin interface has 2 groups of full-color screen parallel data.

In normal mode, 26pin is defined as follows

26PIN PINOUT				16PIN PINOUT			
D (CLK2)	1	2	C(CLK3)	D	1	2	C
B(CLK4)	3	4	A	B	3	4	A
LAT	5	6	CLK(CLK1)	OE	5	6	CLK
OE	7	8	GND	LAT	7	8	R1
R8	9	10	R7	G1	9	10	U1
R6	11	12	R5	R2	11	12	G2

Official website: www.linsn.com

Add: Floor 15&16, Jiajiahao Business Building, No. 10168, Shennan Blvd,
Nanshan District, Shenzhen

Tel: +86-0755-86183590/ 4008836968

R4	13	14	R3		U2	13	14	GND
R2	15	16	R1		GND	15	16	GND
GND	17	18	R16					
R15	19	20	R14					
R13	21	22	R12					
R11	23	24	R10					
R9	25	26	R8					

2) 4 groups parallel data mode (4 data for RV902 in

LedSet/LEDStudioV12.60 or earlier)

Support full-color screen, virtual full-color screen and double-color display, 16P interface is invalid, 26P pin is defined as follow:

RGBR' PINOUT				DOUBLE COLOR			
D	1	2	C	D	1	2	C
B	3	4	A	B	3	4	A
LAT	5	6	CLK	LAT	5	6	CLK
OE	7	8	GND	OE	7	89	GND
U2	9	10	R2'	G4	9	10	R4
G2	11	12	R2	G3	11	12	R3
U1	13	14	R1'	G2	13	14	R2
G1	15	16	R1	G1	15	16	R1
GND	17	18	U4	GND	17	18	G8
R4'	19	20	G4	R8	19	20	G7
R4	21	22	U3	R7	21	22	G6
R3'	23	24	G3	R6	23	24	G5
R3	25	26	GND	R5	25	26D	GND

3) 5 groups parallel data mode (5 data for RV902 in

LedSet/LEDStudioV12.60 or earlier)

Support full-color screen display only. 16P interface is invalid;

Official website: www.linsn.com

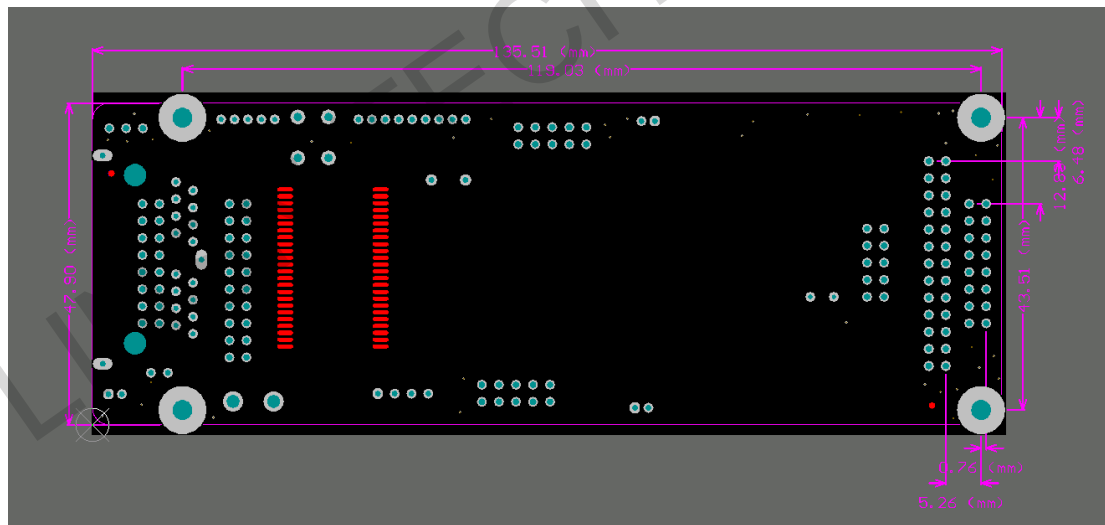
Add: Floor 15&16, Jiajiahao Business Building, No. 10168, Shennan Blvd,
Nanshan District, Shenzhen

Tel: +86-0755-86183590/ 4008836968

26P pin is defined as follows

D	1	2	C
B	3	4	A
LAT	5	6	CLK
OE	7	8	GND
G3	9	10	R3
U2	11	12	G2
R2	13	14	U1
G1	15	16	R1
GND	17	18	NC
U5	19	20	G5
R5	21	22	U4
G4	23	24	R4
U3	25	26	GND

3.Dimensions



4.Model table

RV902 is in stock and RV912 need to make order.

Model	RJ45	or	Pin	output	interface
-------	------	----	-----	--------	-----------

Official website: www.linsn.com

Add: Floor 15&16, Jiajiahao Business Building, No. 10168, Shennan Blvd,
Nanshan District, Shenzhen

Tel: +86-0755-86183590/ 4008836968

	connector	type
RV902	RJ45	interface in front side
RV912	Pin connector	interface in front side

5. Working Conditions

Rated voltage (V)	5	maximum value	5.5	Minimum value	4.5
Rated current (A)	0.80	maximum value	0.87	Minimum value	0.73
Rated power consumption (W)	4.0	maximum value	4.8	Minimum value	3.3
Working temperature (°C)	-20°C ~ 70°C				
Working humidity (%)	0% ~ 95%				

END

Official website: www.linsn.com

Add: Floor 15&16, Jiajiahao Business Building, No. 10168, Shennan Blvd,
Nanshan District, Shenzhen

Tel: +86-0755-86183590/ 4008836968