

RV926

V1.1 Mar.2019

1. Functions and features



RV926 is a standardize product for LED screen manufacturer which does not require extra hub card and is compatible with RV908 with same size. It also equals to RV901 plus a hub75-type hub card (supports up to 32 scan mode). It has following functions and features:

Official website: www.linsn.com

Add: Floor 15&16, Jiajiahao Business Building, No. 10168, Shennan Blvd,
Nanshan District, Shenzhen

Tel: 4008836968/+86-0755-86183590

- 1) 16 hub-75 16-pin connectors on board (supports 32 scan mode) , no extra hub card needed;
- 2) Single card maximum supports 256X1024 or 512X512 pixels;
- 3) Single card can output 32 groups RGB data;
- 4) Supports 138 decode, 595 serial decode and so on;
- 5) Supports pixel-by-pixel brightness and color calibration; and single-card color space conversion;
- 6) High refresh rate and high grey level;
- 7) Supports general driver ICs and most of the PWM driver ICs;
- 8) Supports fetching back RCG file;
- 9) Support network cable BER test;
- 10) In line with RoHS standards;
- 11) In line with EU standards CE-EMC class B.

Official website: www.linsn.com

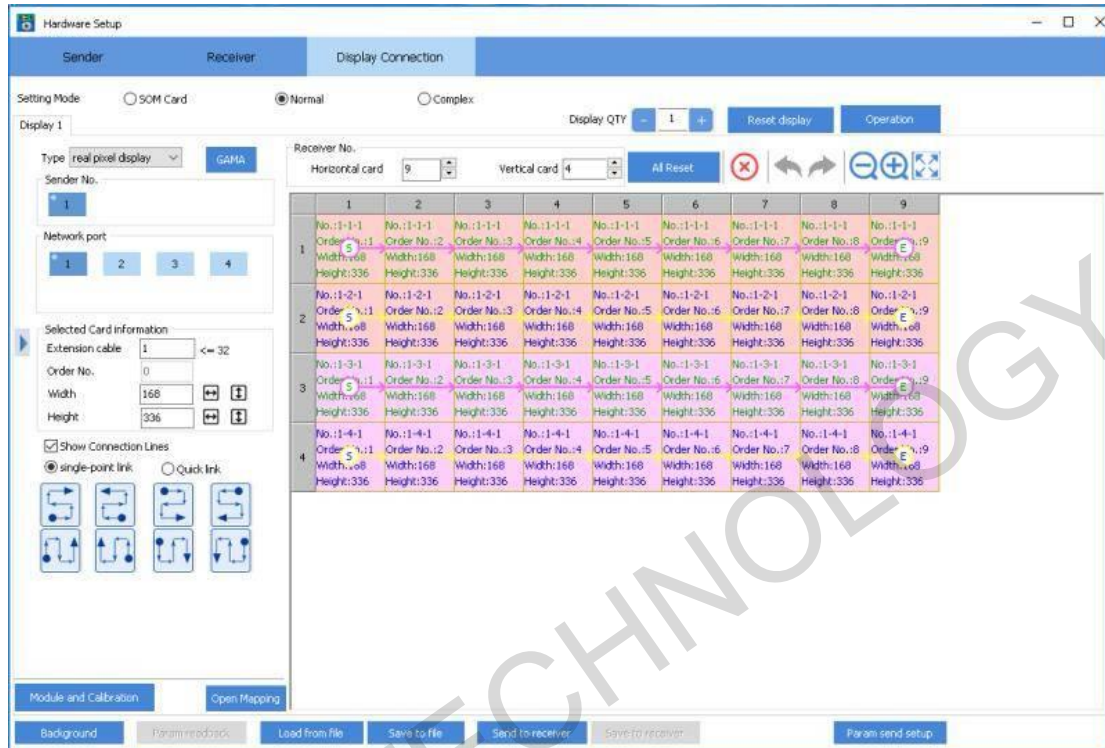
Add: Floor 15&16, Jiajiahao Business Building, No. 10168, Shennan Blvd,
Nanshan District, Shenzhen

Tel: 4008836968/+86-0755-86183590

Note: 1. Supports up to 384*288 pixels for calibration

2. The cascade direction for receivers must be in

horizontal, as follows:



2. RV926 Pinout

There are two working mode for the control system, one is the normal mode with 8 connectors, and the other is 32 groups data with 16 output connectors. It has the following definition:

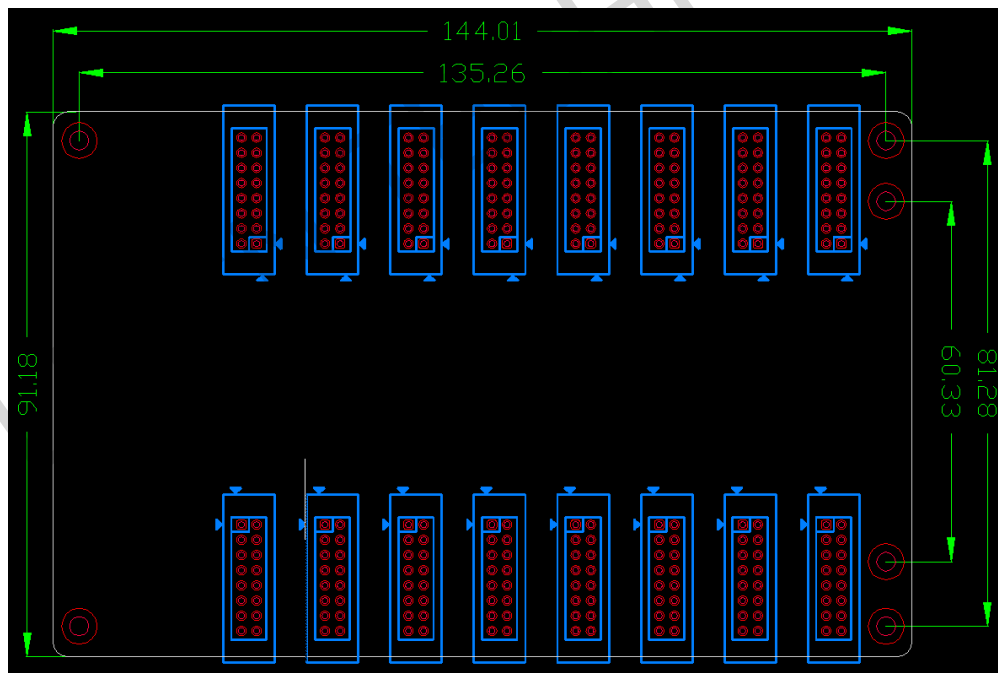
Official website: www.linsn.com

Add: Floor 15&16, Jiajiahao Business Building, No. 10168, Shennan Blvd,
Nanshan District, Shenzhen

Tel: 4008836968/+86-0755-86183590

R1	1	2	G1
B1	3	4	GND
R2	5	6	G2
B2	7	8	E
A	9	10	B
C	11	12	D
CLK	13	14	LAT
OE	15	16	GND

3. Dimensions (mm)



Official website: www.linsn.com

Add: Floor 15&16, Jiajiahao Business Building, No. 10168, Shennan Blvd,
Nanshan District, Shenzhen

Tel: 4008836968/+86-0755-86183590

4. Working conditions

Rated voltage (V)	5	max	5.5	Min	4.5
Rated current (A)	0.80	max	0.87	Min	0.73
Rated power consumption (W)	4.0	max	4.8	Min	3.3
Working temperature (°C)	-20°C ~ 75°C				
Working humidity (%)	0% ~ 95%				

END

Official website: www.linsn.com

Add: Floor 15&16, Jiajiahao Business Building, No. 10168, Shennan Blvd,
Nanshan District, Shenzhen

Tel: 4008836968/+86-0755-86183590