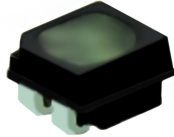


P1.86 Indoor SMD1515 640x480mm Die-Cast Aluminum HD LED Display Specification

Model No.: **P1.86-HD43S-SMD1515-172x86-L640xH480**

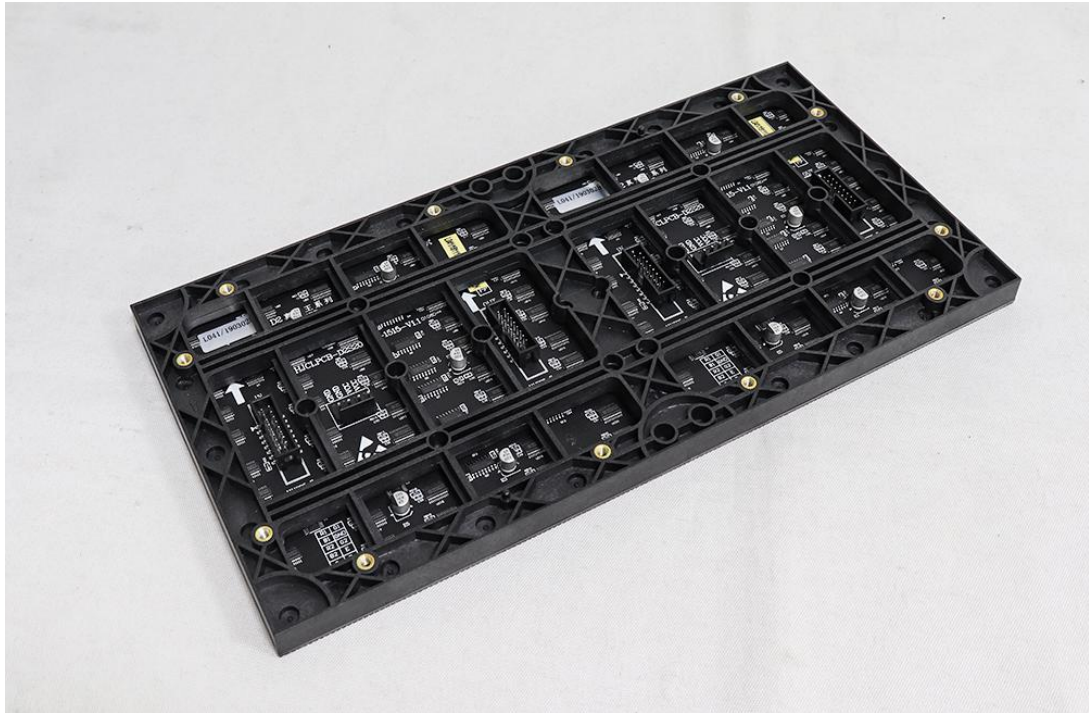
LED Lamp Specification



Color	Package	Intensity	Viewing Angle	Wavelength	Testing Conditions
Red	SMD1515	38-50mcd	120°	618-623nm	25°C, 8mA
Green		150-195mcd	120°	519-523nm	25°C, 5mA
Blue		19-25mcd	120°	467-471nm	25°C, 3mA

Module Photo





Module Parameter

Pixel Pitch	1.86mm
Pixel Configuration	SMD1515
Density	288,906 pixels/m ²
Module Resolution	172 pixel(L) * 86 pixel(H)
Module Dimension	320mm(L) * 160mm(H) * 15mm(D)
Driving Mode	Constant current, 1/43 duty

LED Cabinet





Module Quantity in a Cabinet	2(L) *3(H)
Cabinet Dimension	640 (L) *480 (H) * 90(D)mm
Cabinet Resolution	344 pixel(L) * 258 pixel(H)
Cabinet Material	Die-cast aluminum
Cabinet Weight	≈8KG

Electricity Parameter

Optical Ratings

Brightness	≥500 cd/m ²
Viewing Angle	120°(Horizontal); 120°(Vertical)
Best Viewing Distance	≥1.86m
Gray Grade	14 bits
Display Color	4.4 trillion colors
Brightness Adjustment	100 grades by software or automatically by sensor
Max. Power Consumption	580 W/m ²
Avg. Power Consumption	195 W/m ²

Control System

Frame Frequency	≥60Hz
Refresh Frequency	≥3,840Hz
Input Signal	Composite Video, S-video, DVI, HDMI, SDI, HD-SDI
Control Distance	100M (Ethernet cable); 20KM (Optical fiber cable)
Support VGA Mode	800*600, 1024*768, 1280*1024, 1600*1200
Color Temperature	5000—9300 adjustable
Brightness Correction	Pixel by pixel, module by module, cabinet by cabinet

Tel: +86-755-23190947

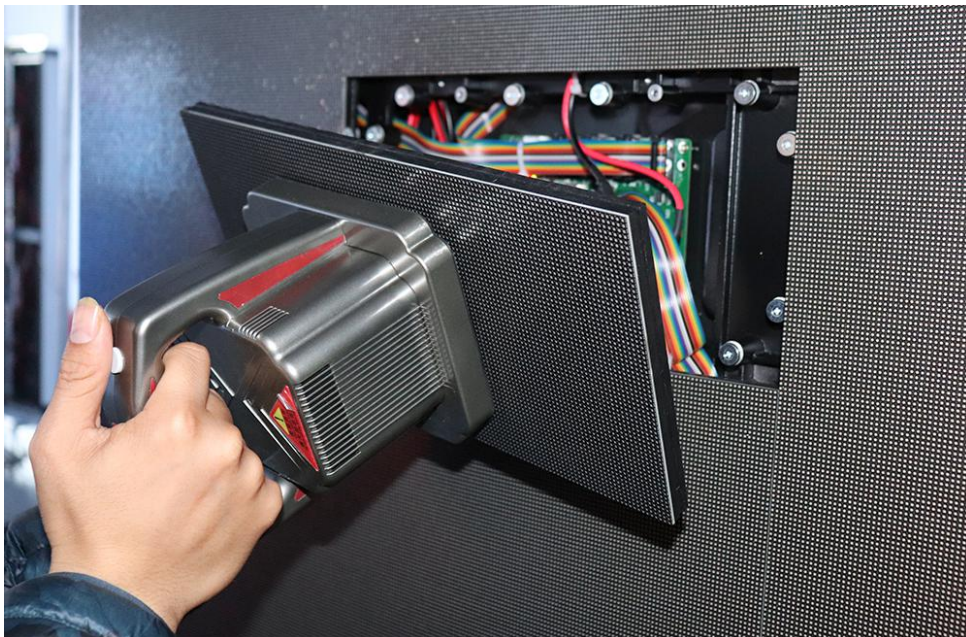
Website: <https://www.eagerled.com>

E-mail: manager@eagerled.com

Address: Building C, Zhongyu High-Tech Industrial Park, Heshuikou, Matian, Guangming, Shenzhen, China

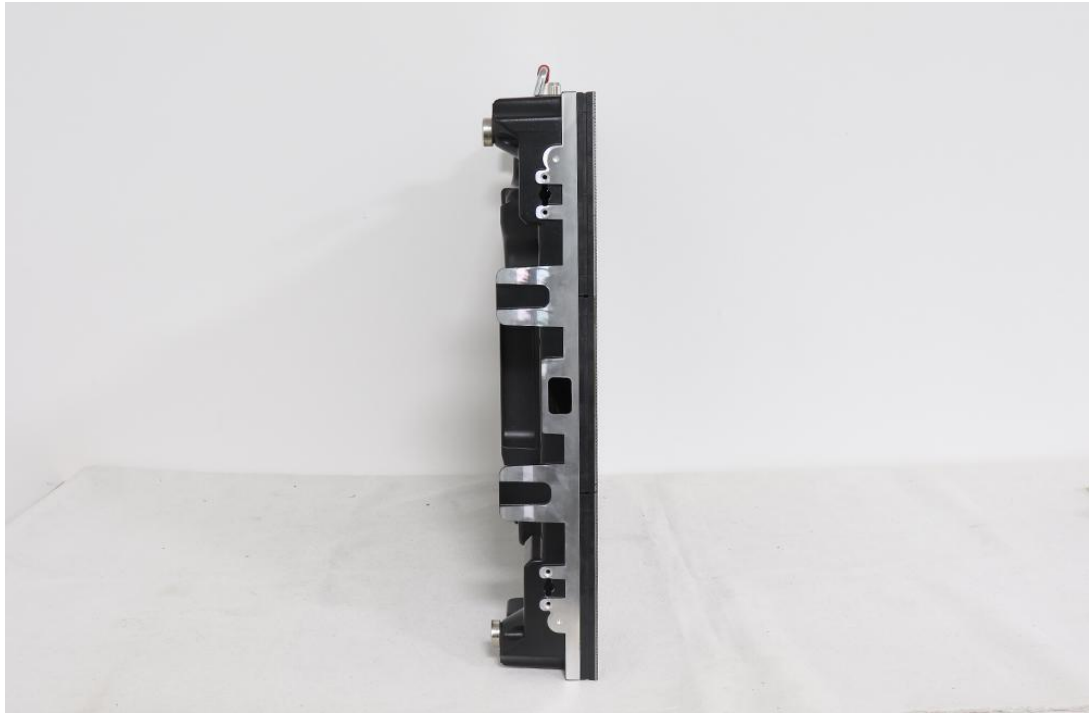
Reliability	
Working Temperature	-20~+60 °C
Storage Temperature	-30~+70 °C
Working Humidity	10%~90% RH
Lifetime	100,000 hours
MTBF	5000 hours
Continuous Operating Time	≥72 hours
Protection Grade	IP31
Out-of-Control Pixel Rate	≤0.01%

Front Service



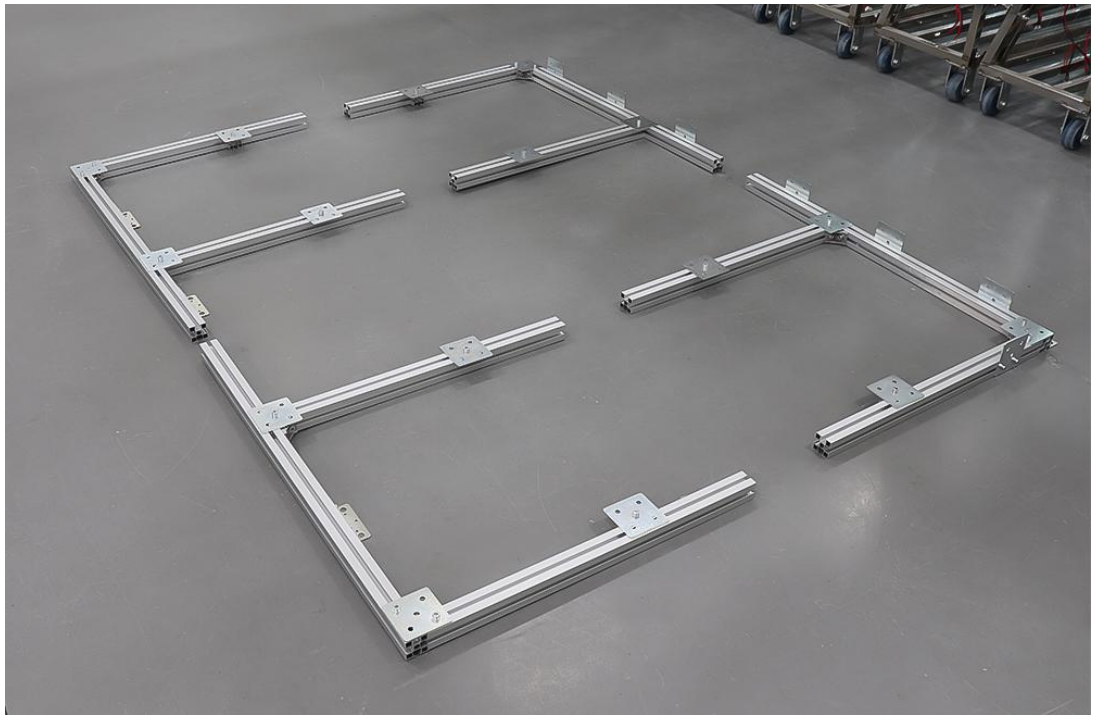
Cabinet Details

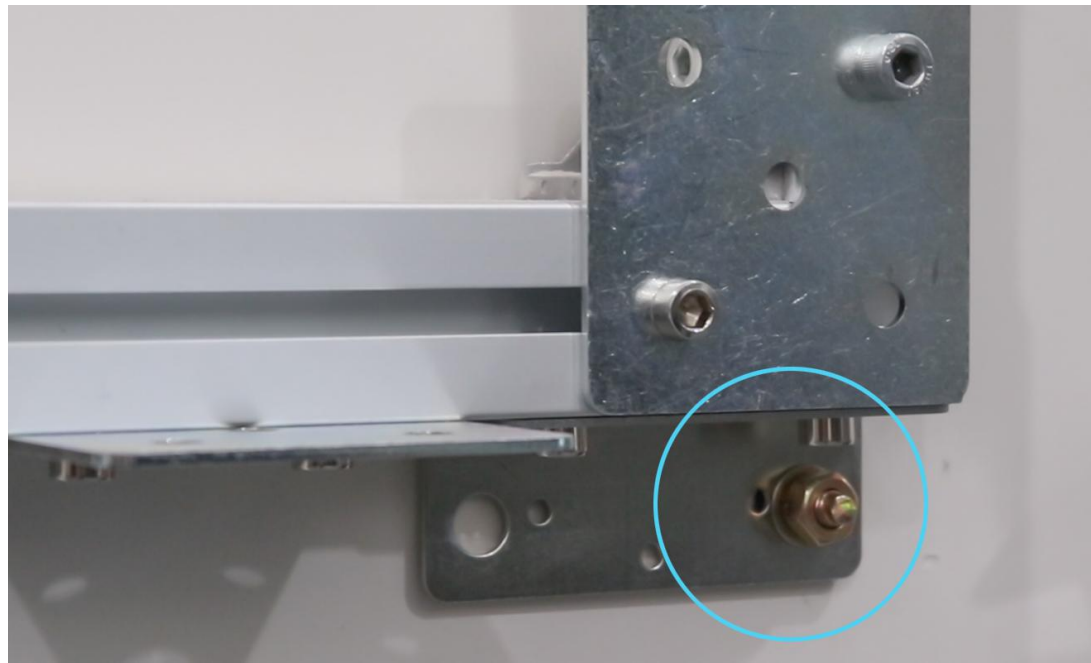
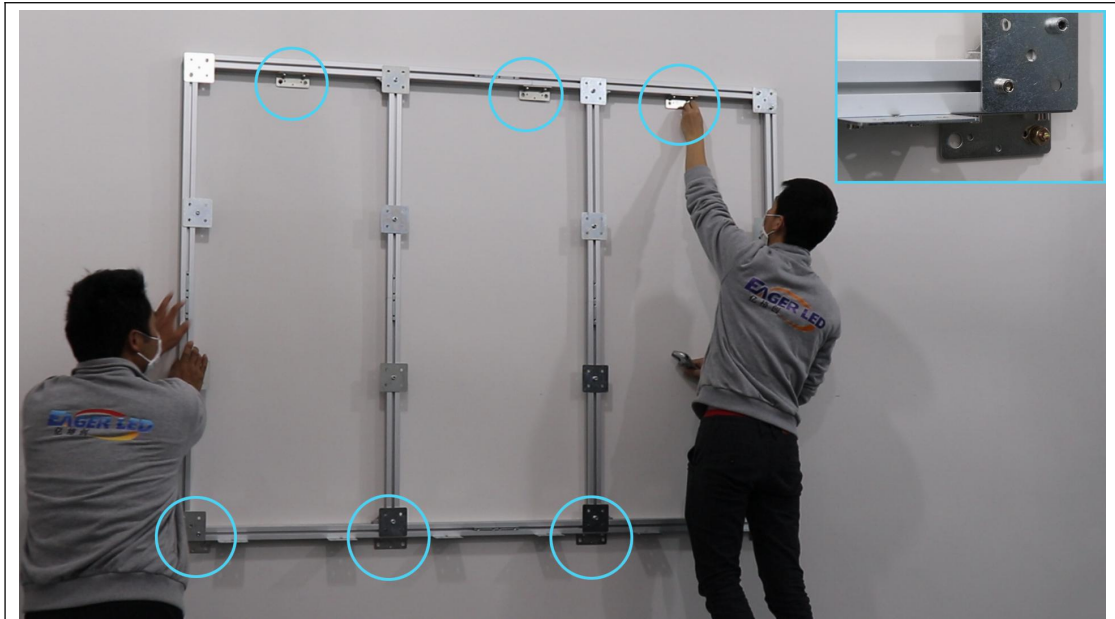


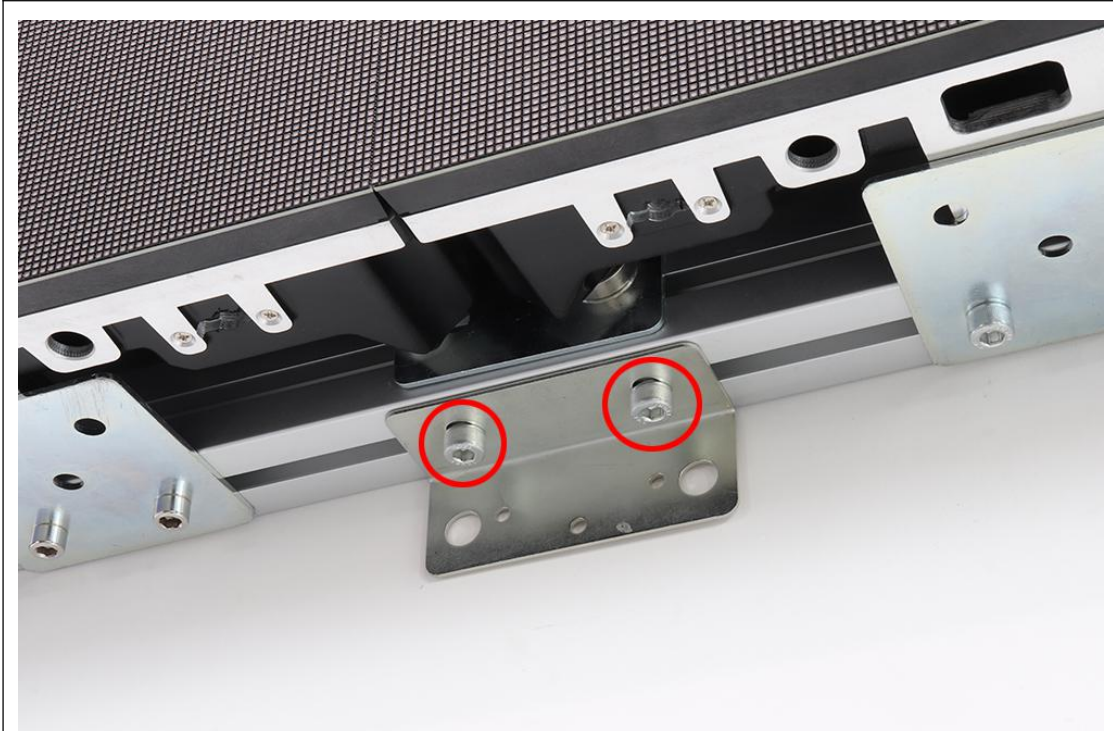














Package



