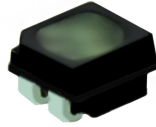


P2 Indoor 1/32 Scan 128*128mm LED Module

Specification

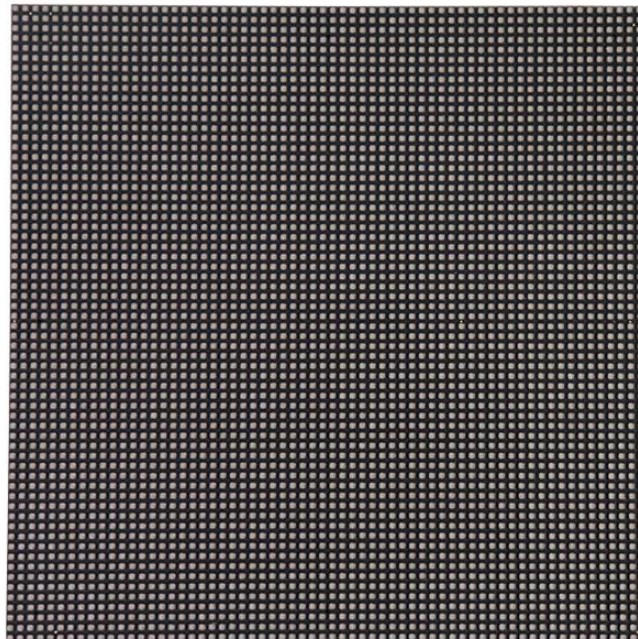
Model No.: **P2-I32S-SMD1515-64x64**

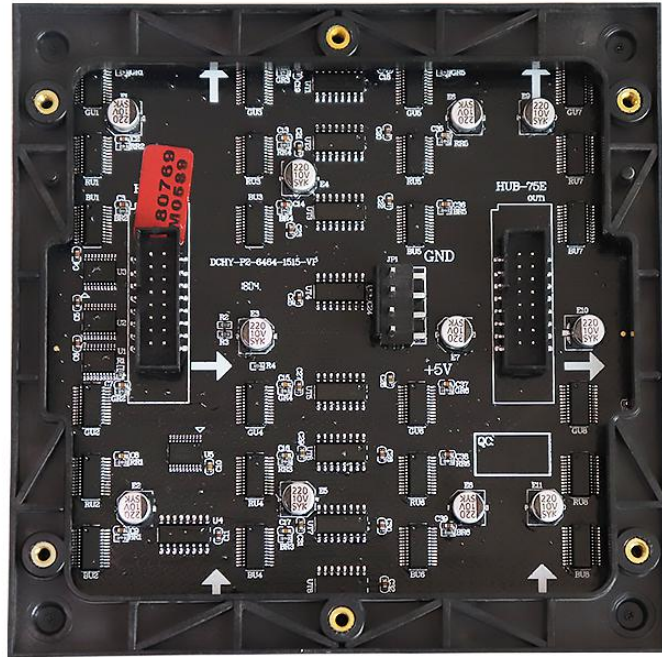
LED Lamp Specification



Color	Package	Intensity	Viewing Angle	Wavelength	Testing Conditions
Red	SMD1515	45-65mcd	120°/120°	620-625nm	25℃, 10mA
Green		120-200mcd	120°/120°	516-530nm	25℃, 5mA
Blue		20-40mcd	120°/120°	465-475nm	25℃, 5mA

Module Photo





Module Parameter

Pixel Pitch	2mm
Pixel Configuration	SMD1515
Density	250,000 pixels/m ²
Module Resolution	64pixel(L) * 64pixel(H)
Module Dimension	128mm(L) * 128mm(H) * 18mm(D)
Driving Mode	Constant current, 1/32 duty

Electricity Parameter

Optical Ratings	
Brightness	≥1200 cd/m ²
Viewing Angle	120°(Horizontal); 120°(Vertical)
Best Viewing Distance	≥2m
Gray Grade	14 bits
Display Color	4.4 trillion colors
Brightness Adjustment	100 grades by software or automatically by sensor
Max. Power Consumption	20W

Control System	
Frame Frequency	≥60Hz
Refresh Frequency	≥1920Hz
Input Signal	Composite Video, S-video, DVI, HDMI, SDI, HD-SDI
Control Distance	100m(Ethernet cable); 20KM(optical fiber cable)
Support VGA Mode	800*600, 1024*768, 1280*1024, 1600*1200
Color Temperature	5000—9300 adjustable

Brightness Correction	Pixel by pixel, module by module, cabinet by cabinet
Reliability	
Working Temperature	-20~+60 °C
Storage Temperature	-30~+70 °C
Working Humidity	10%~90% RH
Lifetime	100,000 hours
MTBF	5000 hours
Continuous Operating Time	≥72 hours
Protection Grade	IP31
Out-of-Control Pixel Rate	≤0.01%

Package



