
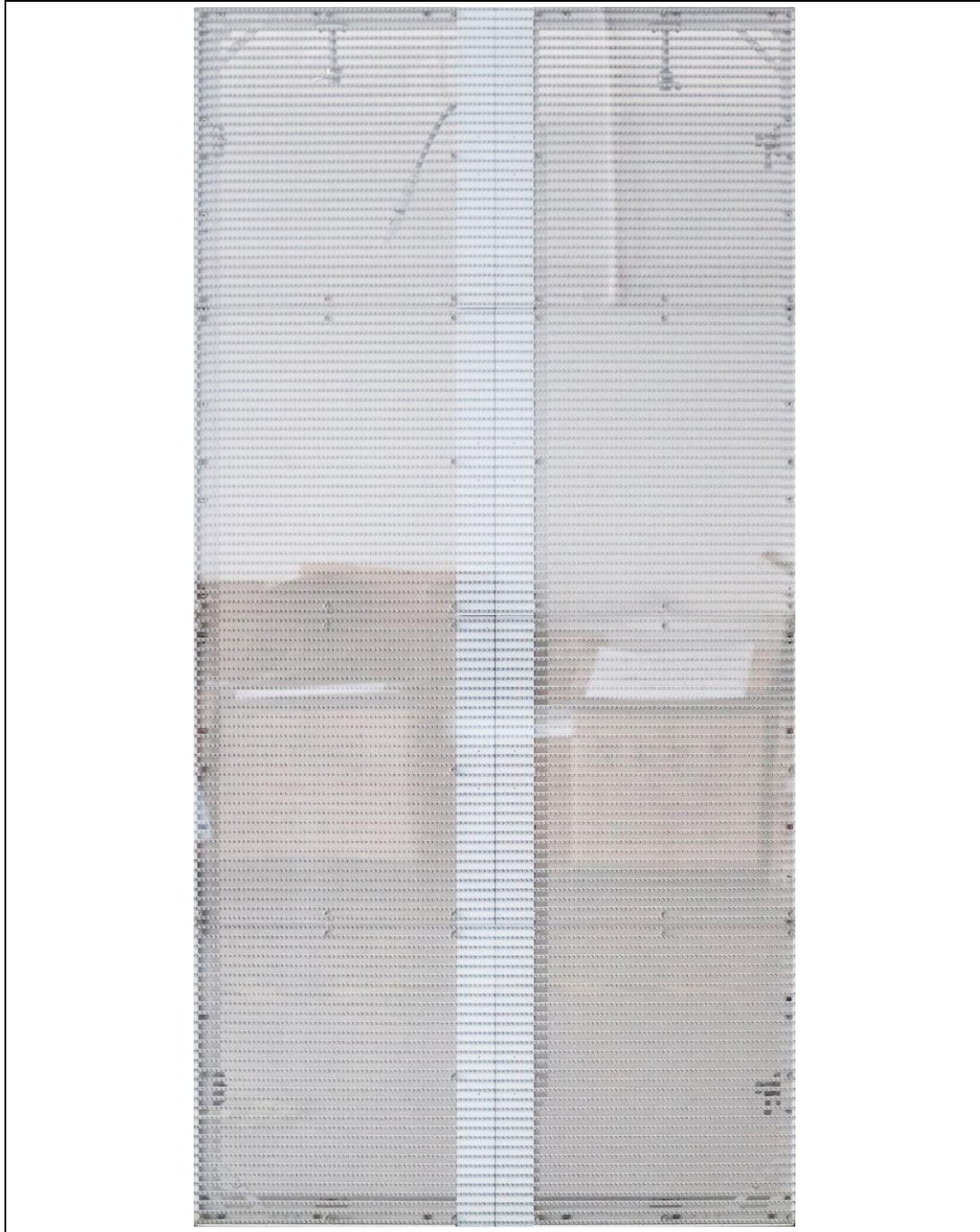


P3.91 Transparent Glass LED Display

Model No.: **P3.91-T16S-SMD1921-64x32-L500xH1000**

LED Lamp Specification					
					
Color	Package	Intensity	Viewing Angle	Wavelength	Testing Conditions
Red	SMD1921	180mcd	120 °	622nm	25°C,15mA
Green		480mcd	120 °	522nm	25°C,8mA
Blue		85mcd	120 °	472nm	25°C,5mA
Module Parameter					
Pixel Pitch		3.91mm(H);7.82mm(V)			
Pixel Configuration		SMD1921			
Density		32,768 pixels/m ²			
Module Resolution		64pixel(L) *32pixel(H)			
Module Dimension		250mm(L) * 250mm(H)			
Driving Mode		Constant current, 1/16 duty			
LED Cabinet					



Tel: +86-755-32930690

Fax: +86-755-32930691

E-mail: manager@eagerled.com

Website: <http://www.eagerled.com>

Address: Building A, Mashantou No.1 Industrial Park, Gongming, Guangming, Shenzhen, China 518106



Module Quantity in a Cabinet	2(L) *4(H)
Cabinet Dimension	500(L) * 1000(H) * 65(D)mm
Cabinet Resolution	128 pixel(L) * 128 pixel(H)
Cabinet Material	Aluminum
Cabinet Weight	≈7.5KG
Electricity Parameter	
Optical Ratings	
Brightness	≥2,500 cd/m ²

Viewing Angle	120 °(Horizontal); 120 °(Vertical)
Best Viewing Distance	≥3.9m
Gray Grade	14 bits
Display Color	4.4 trillion Colors
Brightness Adjustment	100 grades by software or automatically by sensor
Operation Power	AC100-240V 50-60Hz Switchable
Max. Power Consumption	400 W/m ²
Avg. Power Consumption	135W/m ²
Control System	
Frame Frequency	≥60Hz
Refresh Frequency	≥1,920Hz
Input Signal	Composite Video, S-video, DVI, HDMI, SDI, HD-SDI
Control Distance	100m(Ethernet cable); 20KM(optical fiber cable)
Support VGA Mode	800*600, 1024*768, 1280*1024, 1600*1200
Color Temperature	5000—9300 adjustable
Brightness Correction	Pixel by pixel, module by module, cabinet by cabinet
Reliability	
Working Temperature	-20~+60 °C
Storage Temperature	-30~+70 °C
Working Humidity	10%~90% RH
Lifetime	100,000 hours
MTBF	5000 hours
Continuous Operating Time	≥72 hours
Protection Grade	IP42
Out-of-Control Pixel Rate	≤0.01%
Cabinet Details	



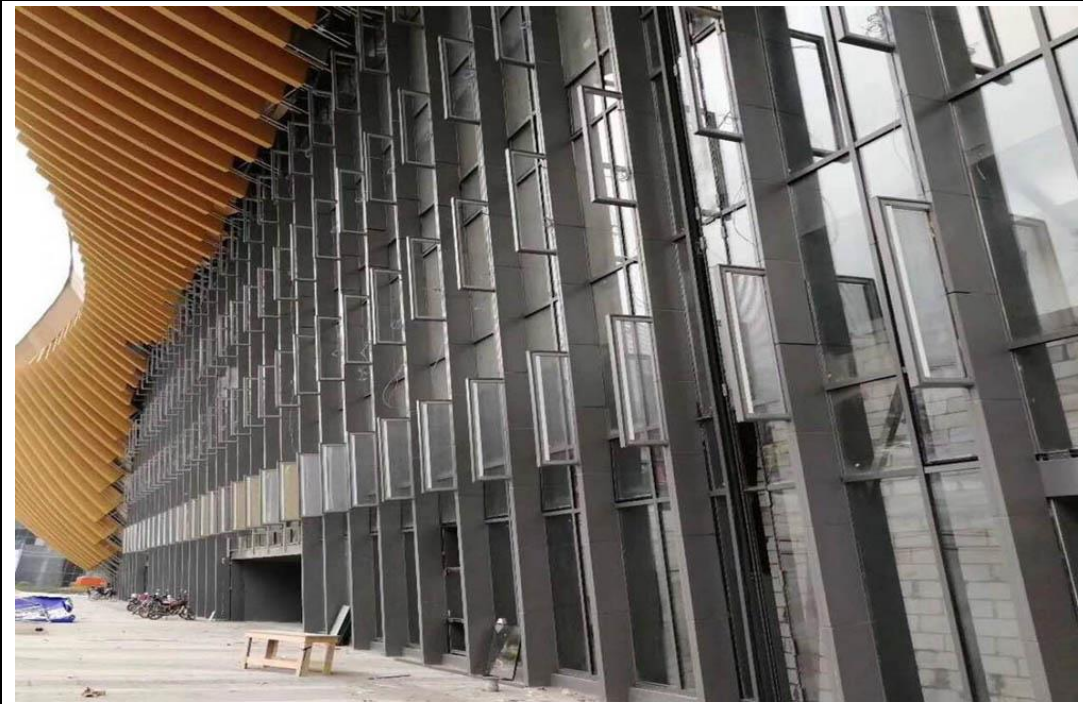






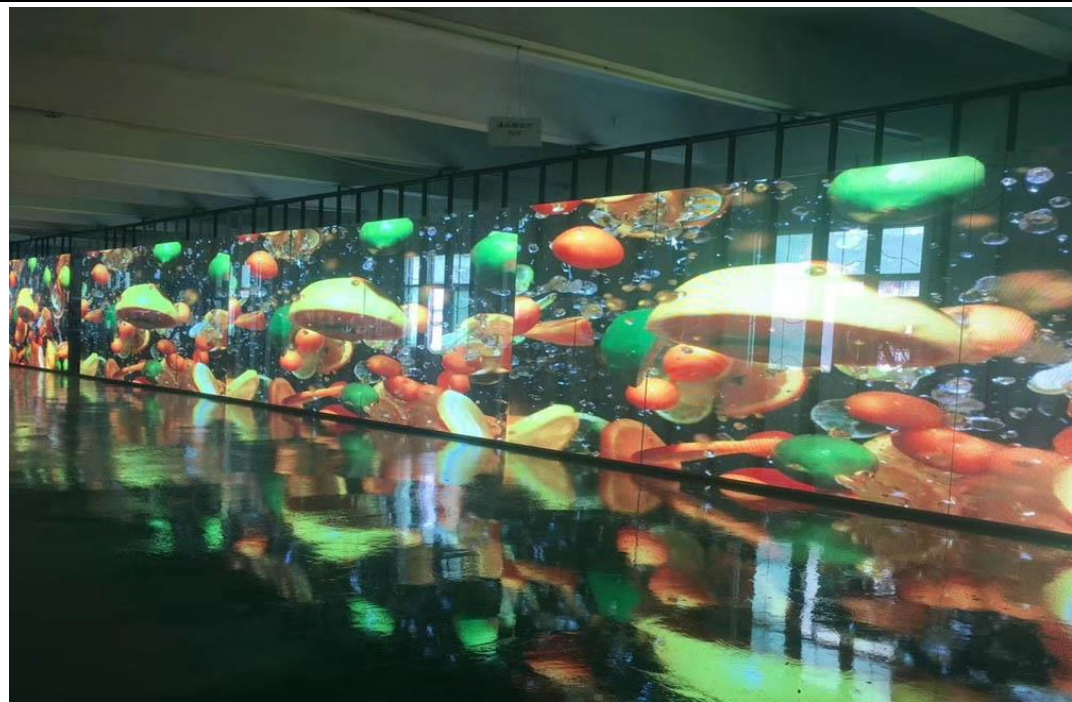


Applications









Package



