

P4 Indoor 1/16 Scan SMD2121 2048x1024mm Magnetic Front Service LED Display

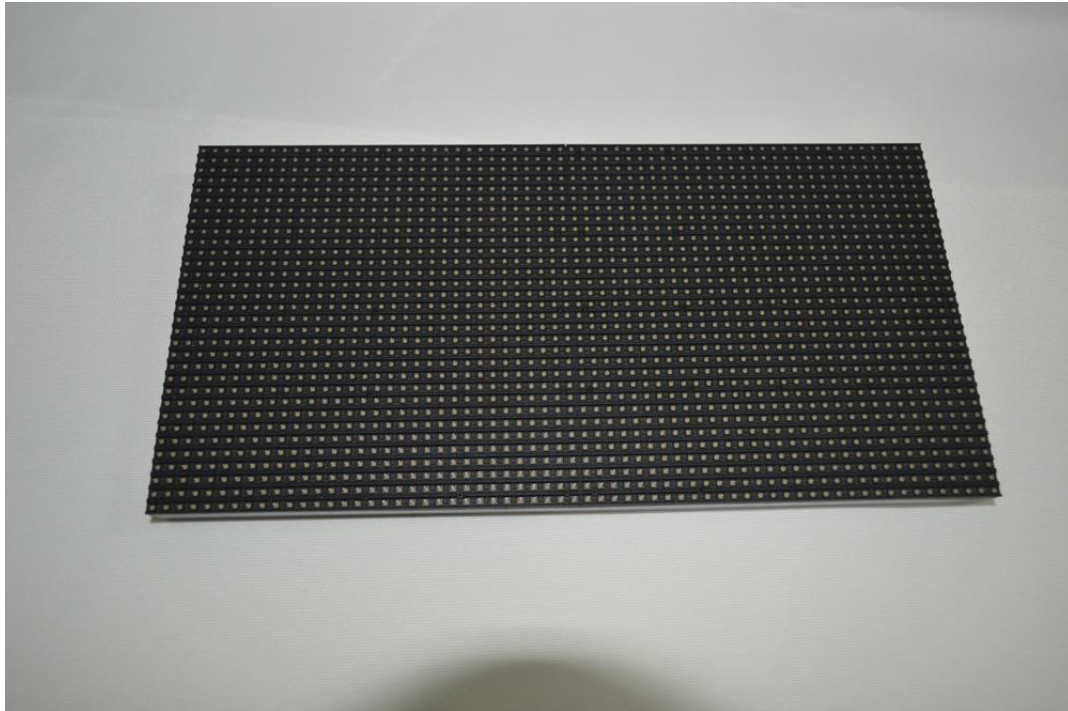
Model No.: **P4-I16S-SMD2121-64x32L2048xH1024**

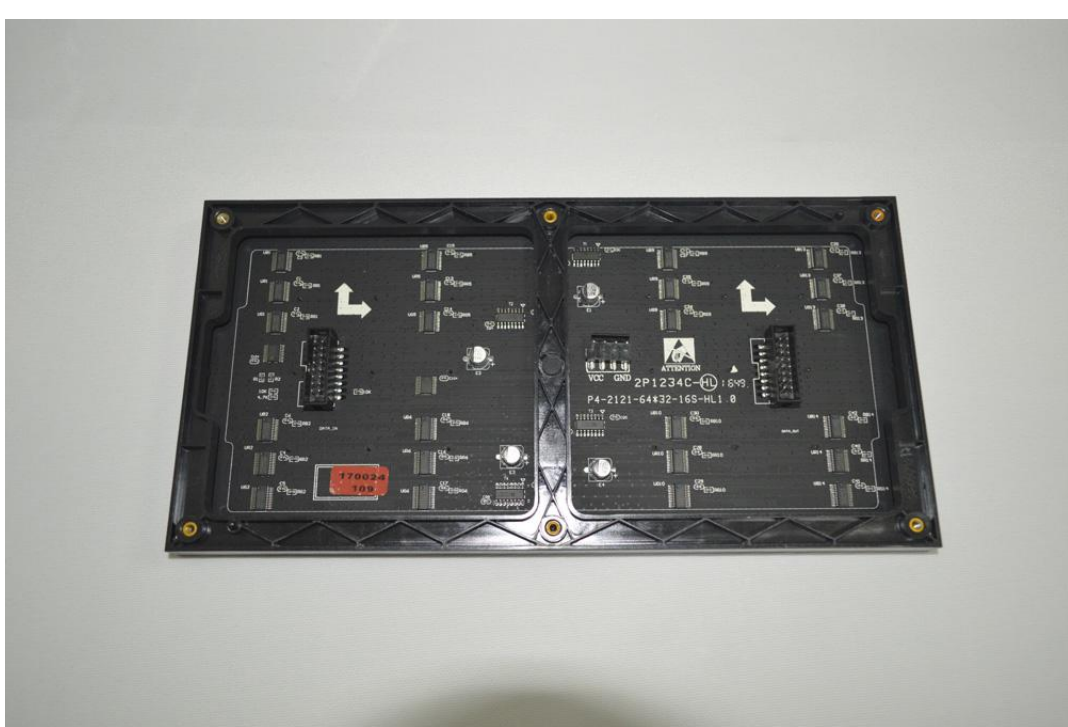
LED Lamp Specification



Color	Package	Intensity	Viewing Angle	Wavelength	Testing Conditions
Red	SMD2121	70-100mcd	120°	620-625nm	25°C,20mA
Green		120-200mcd	120°	515-530nm	25°C,10mA
Blue		30-40mcd	120°	465-475nm	25°C,5mA

Module Photo



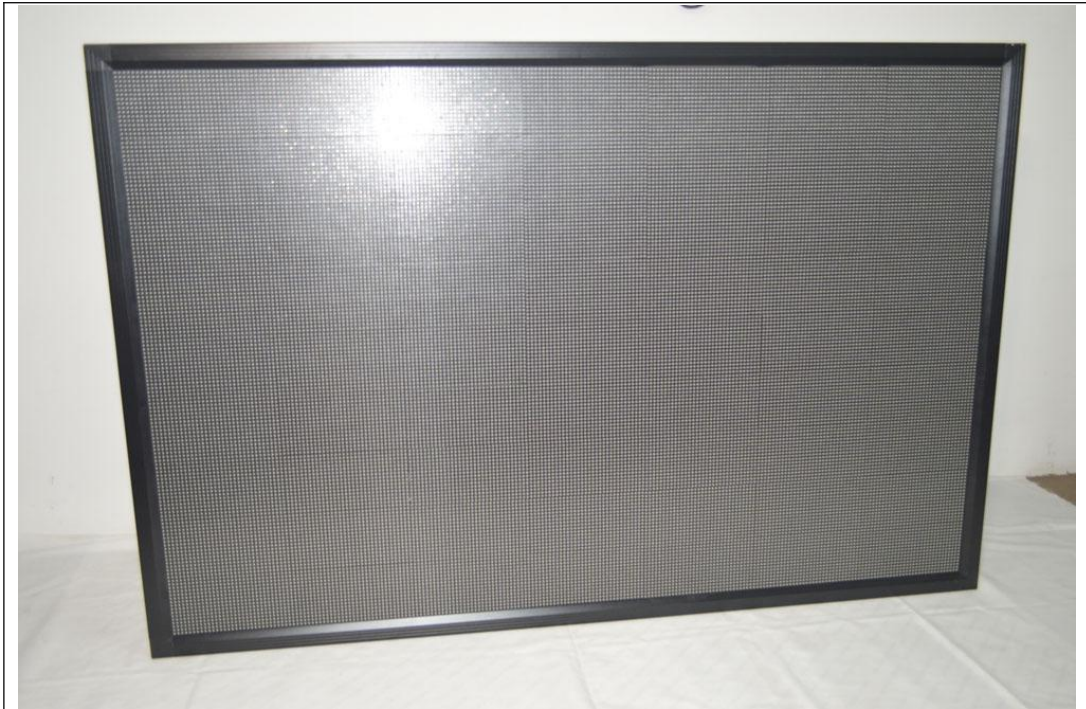


Module Parameter

Pixel Pitch	4mm
Pixel Configuration	SMD2121
Density	62,500 pixels/m ²
Module Resolution	64pixel(L) *32pixel(H)
Module Dimension	256mm(L) * 128mm(H) * 18mm(D)
Driving Mode	Constant current, 1/16 duty
Module Mask	Pure black mask---high contrast screen

LED Cabinet

--	--



Module Quantity in a Cabinet	8(L) * 8(H)
Display Size	2048 (L) * 1024 (H) mm
Border Size	45mm
Cabinet Dimension	2138 (L) * 1114 (H) * 90(D)mm
Cabinet Resolution	512(L) * 256(H)
Cabinet Material	Aluminum Frame
Cabinet Weight	≈42KG

Electricity Parameter

Tel: +86-755-32930690

Fax: +86-755-32930691

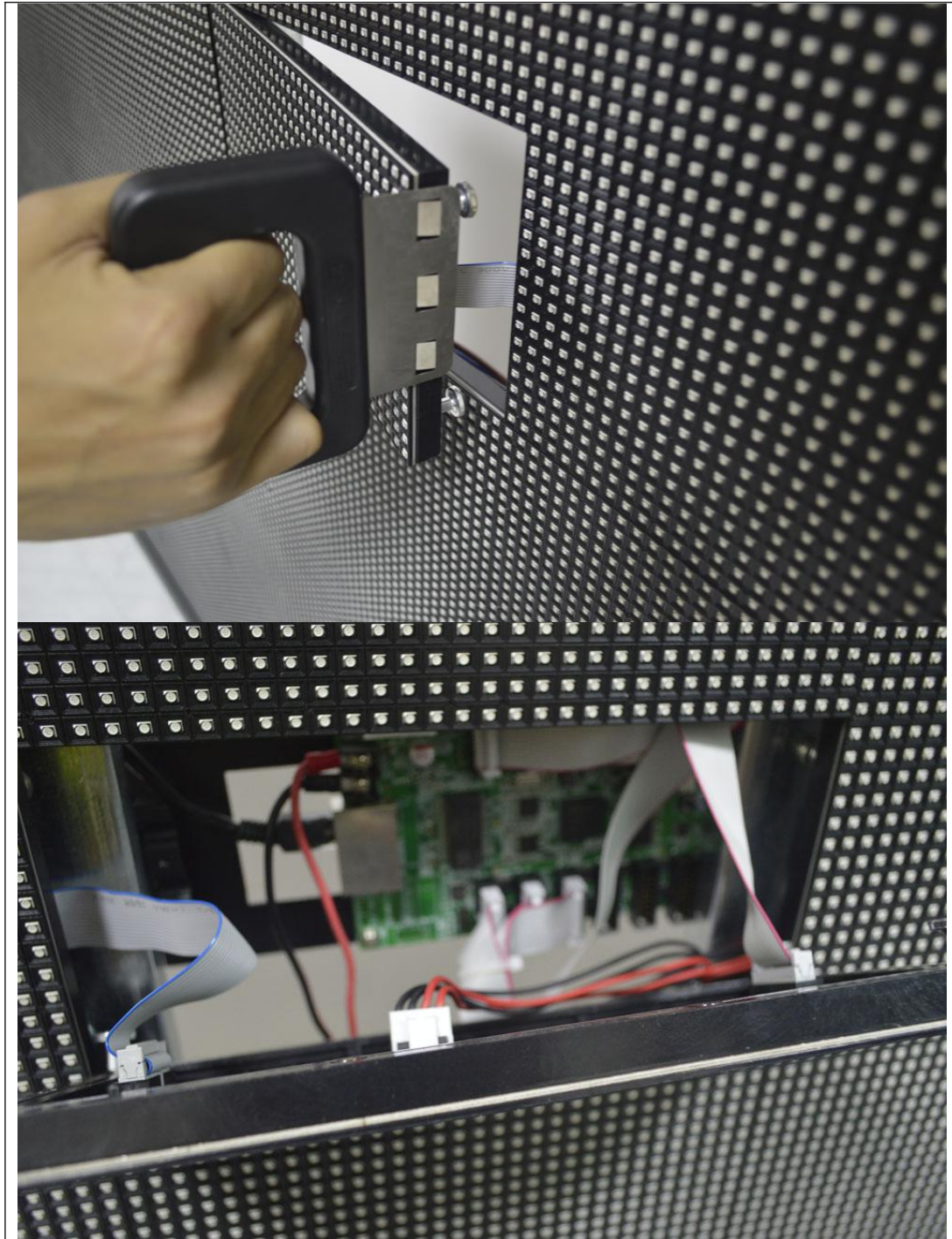
E-mail: manager@eagerled.com

Website: <http://www.eagerled.com>

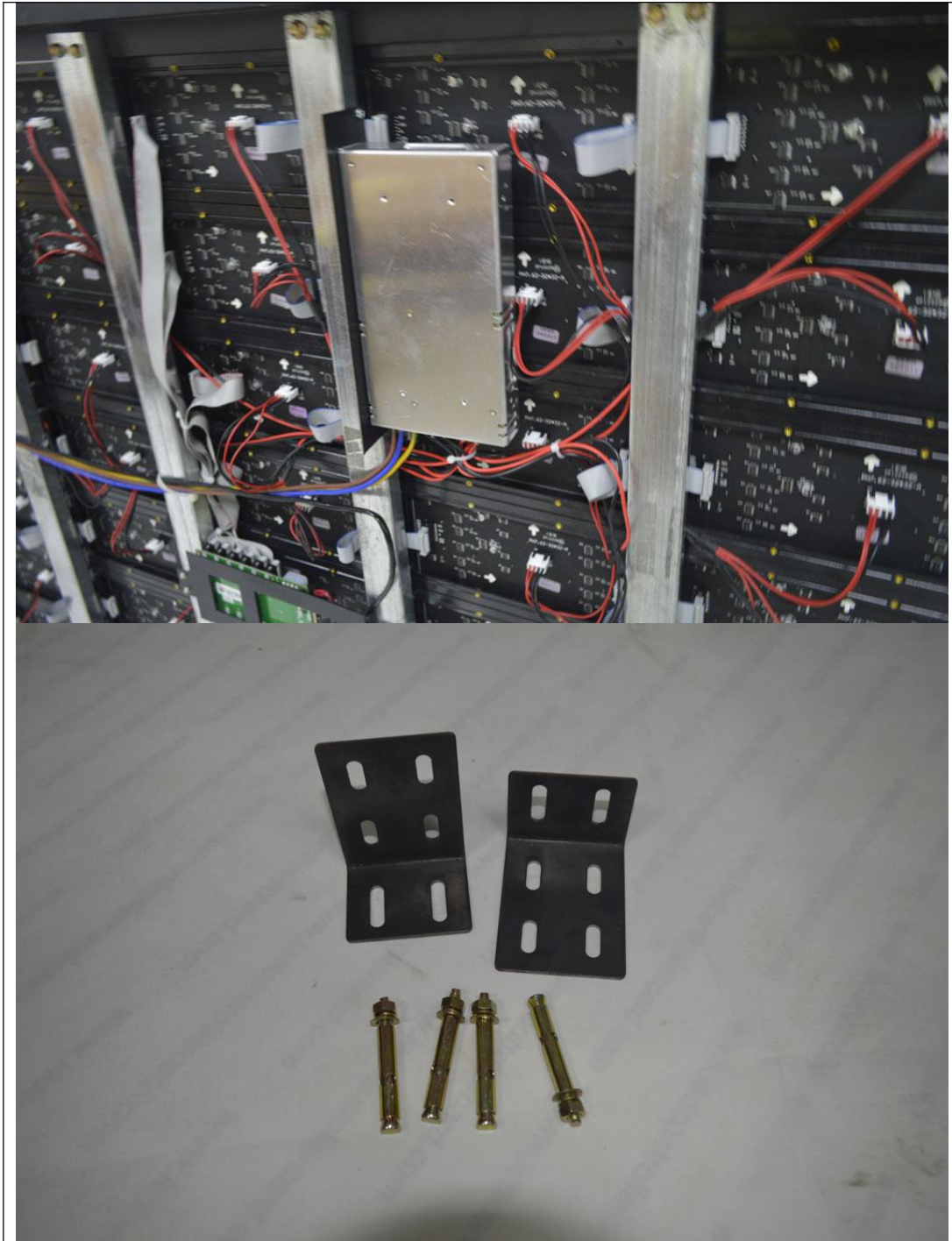
Address: No.257, Shangwu Avenue, Tianxin Community, Shiyan Town, Bao'an District, Shenzhen, China 518108

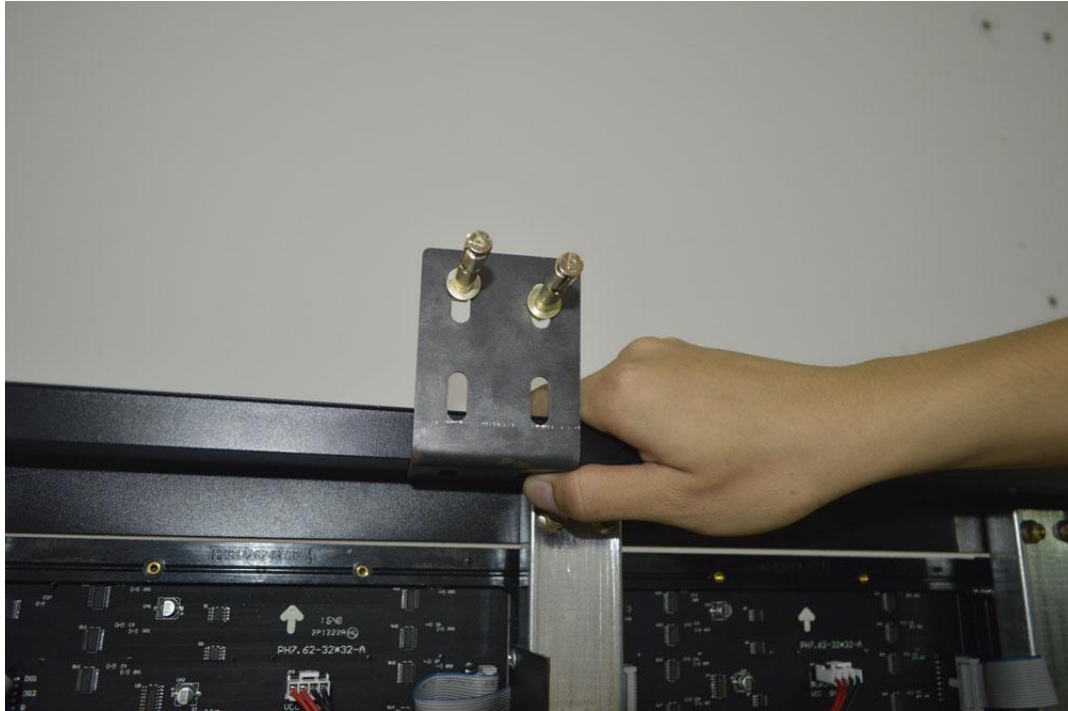
Optical Ratings	
Brightness	≥1,200 cd/m ²
Viewing Angle	120°(Horizontal); 120°(Vertical)
Best Viewing Distance	≥4m
Gray Grade	14 bits
Display Color	4.4 trillion colors
Brightness Adjustment	100 grades by software or automatically by sensor
Operation Power	AC100-240V 50-60Hz Switchable
Max. Power Consumption	680 W/m ²
Avg. Power Consumption	230W/m ²
Control System	
Frame Frequency	≥60Hz
Refresh Frequency	≥960Hz
Input Signal	Composite Video, S-video, DVI, HDMI, SDI, HD-SDI
Control Distance	100m(Ethernet cable); 20KM(optical fiber cable)
Support VGA Mode	800*600, 1024*768, 1280*1024, 1600*1200
Color Temperature	5000—9300 adjustable
Brightness Correction	Pixel by pixel, module by module, cabinet by cabinet
Reliability	
Working Temperature	-20~+60 °C
Storage Temperature	-30~+70 °C
Working Humidity	10%~90% RH
Lifetime	100,000 hours
MTBF	5000 hours
Continuous Operating Time	≥72 hours
Protection Grade	IP31
Out-of-Control Pixel Rate	≤0.01%
Cabinet Details	











Package



