

## P4 Outdoor SMD2525 256x128mm LED Module

### Specification

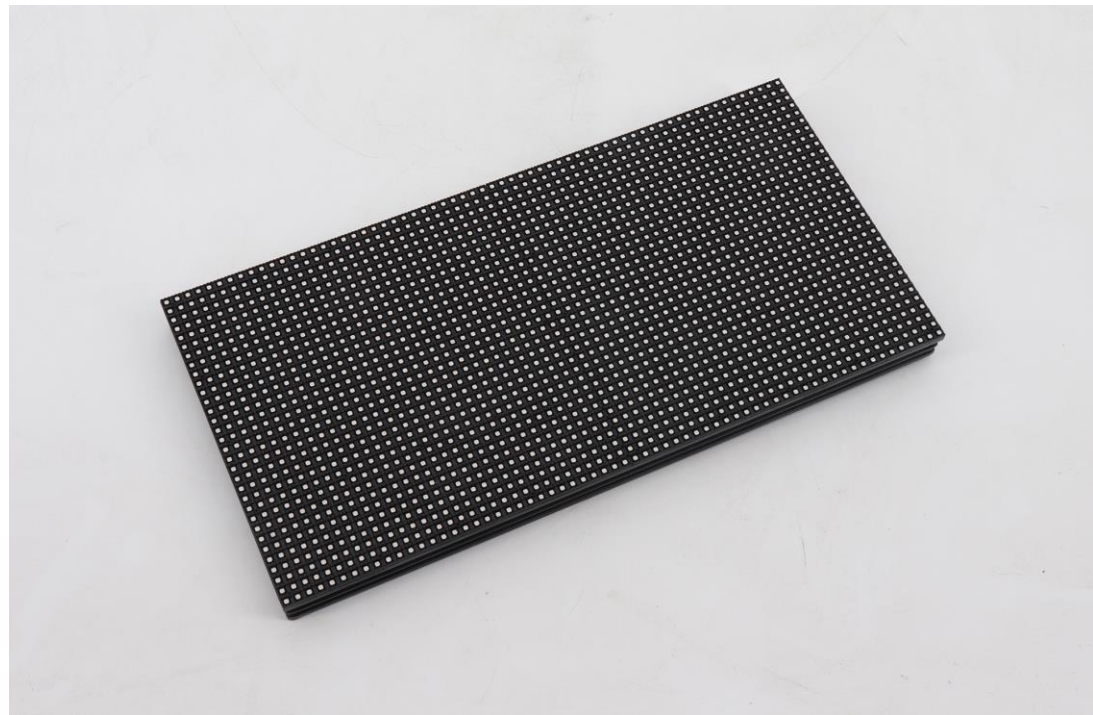
Model No.: **P4-O8S-SMD2525-64x32**

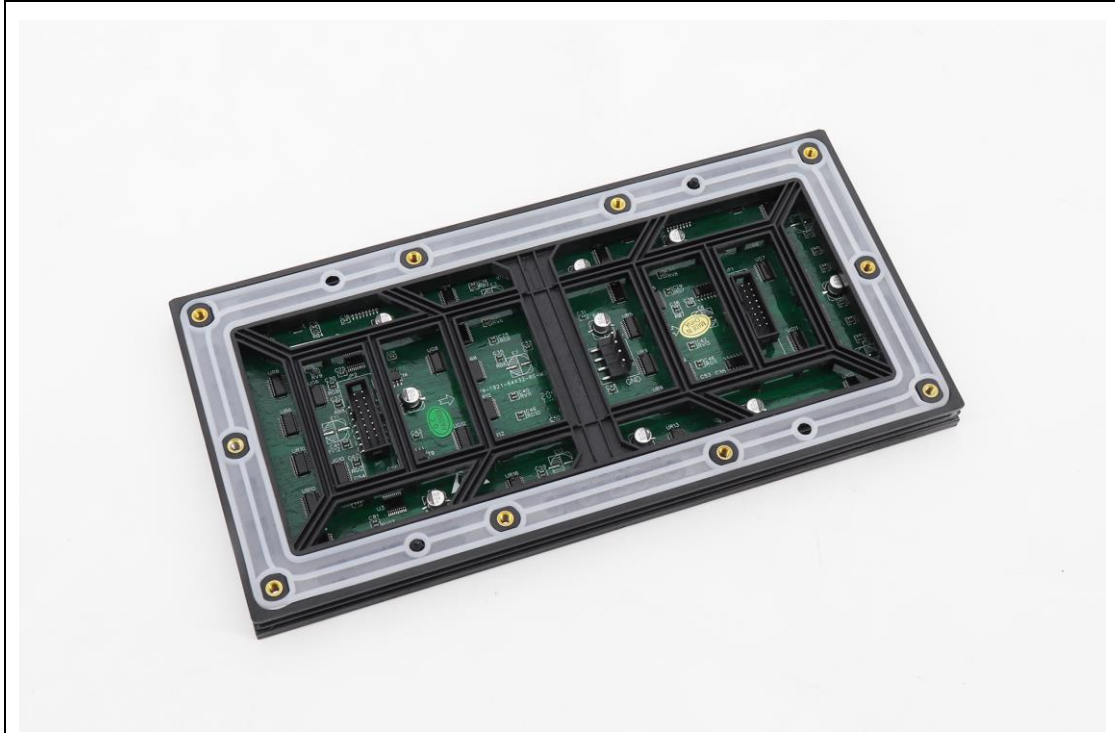
#### LED Lamp Specification



Color	Package	Intensity	Viewing Angle	Wavelength	Testing Conditions
Red	SMD2525	450-600mcd	120°	620-625nm	25°C,20mA
Green		1000-1400mcd	120°	516-530nm	25°C,20mA
Blue		200-400mcd	120°	465-475nm	25°C,20mA

#### Module Photo





### Module Parameter

Pixel Pitch	4mm
Pixel Configuration	SMD2525
Density	62,500 pixels/m <sup>2</sup>
Module Resolution	64pixel(L) * 32pixel(H)
Module Dimension	256mm(L) * 128mm(H) * 25mm(D)
Driving Mode	Constant current, 1/8 duty
Module Mask	Pure black mask---high contrast screen

### Electricity Parameter

#### Optical Ratings

Brightness	≥6,000 cd/m <sup>2</sup>
Viewing Angle	120 °(Horizontal); 120 °(Vertical)
Best Viewing Distance	≥4m
Gray Grade	14 bit
Display Color	4.4 trillion colors
Brightness Adjustment	100 grades by software or automatically by sensor
Max. Power Consumption	30W

#### Control System

Frame Frequency	60Hz
Refresh Frequency	≥1920Hz
Input Signal	Composite Video, S-video, DVI, HDMI, SDI, HD-SDI
Control Distance	100m(Ethernet cable); 20KM(optical fiber cable)
Support VGA Mode	800*600, 1024*768, 1280*1024, 1600*1200

Color Temperature	5000—9300 adjustable
Brightness Correction	Pixel by pixel, module by module, cabinet by cabinet
<b>Reliability</b>	
Working Temperature	-20~+60 °C
Storage Temperature	-30~+70 °C
Working Humidity	10%~90% RH
Lifetime	100,000 hours
MTBF	5000 hours
Continuous Operating Time	≥72 hours
Protection Grade	IP65
Out-of-Control Pixel Rate	≤0.01%

**Package**

