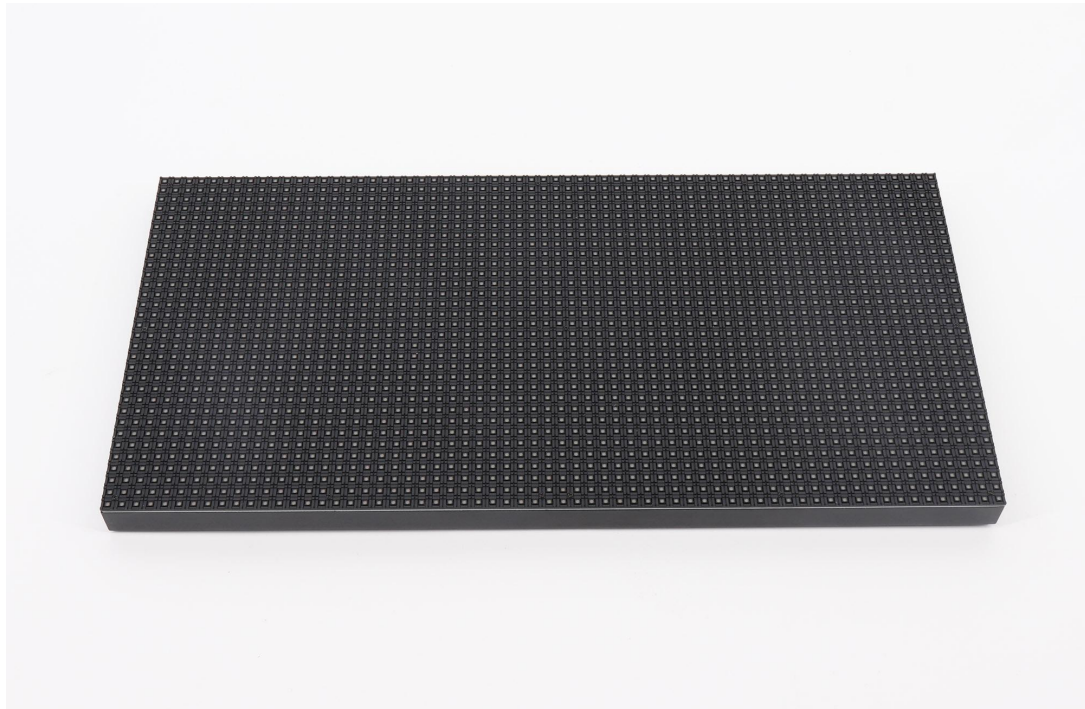
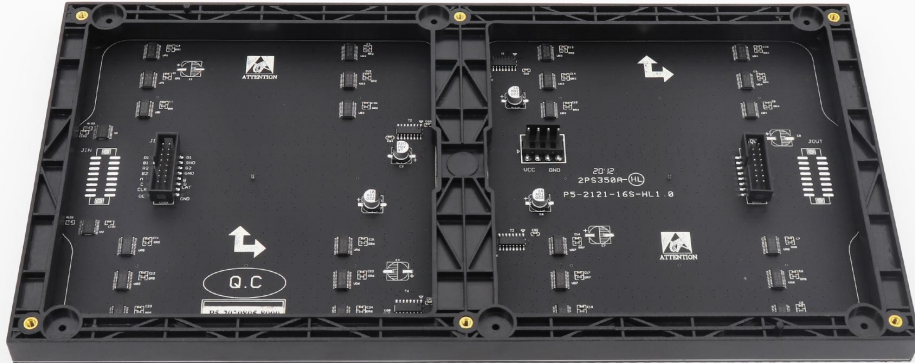


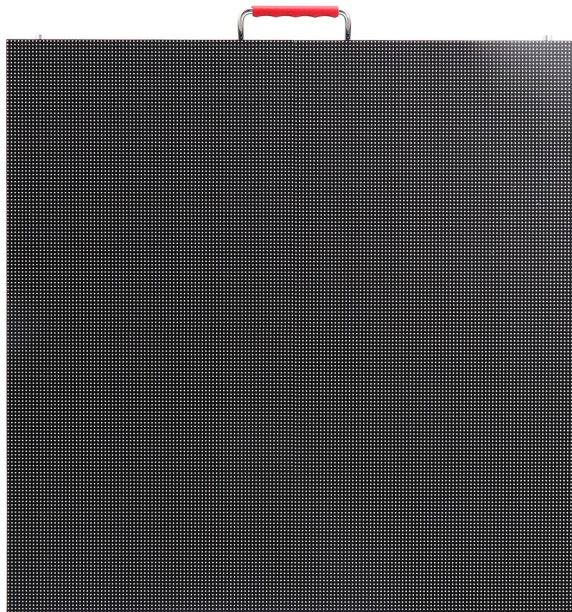
P5 Indoor 640x640mm Die-Cast Aluminum Rental LED Display

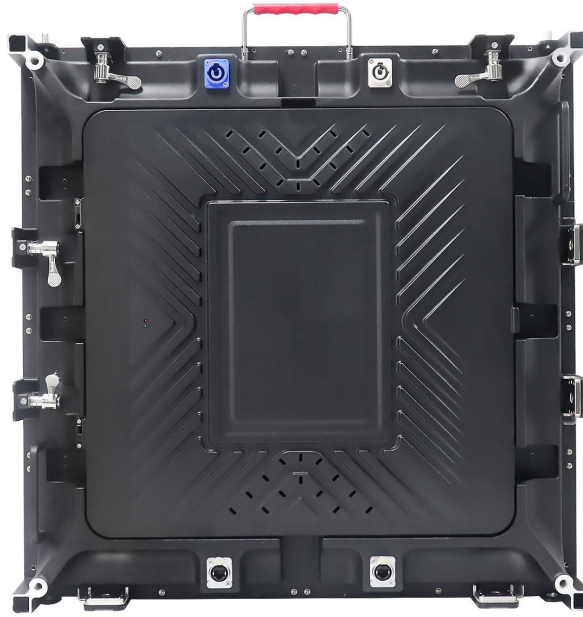
Model No.: **P5-IR16S-SMD2121-64x32-L640xH640**

Module Parameter	
Pixel Pitch	5mm
Pixel Configuration	SMD2121
Density	40,000pixels/m ²
Module Resolution	64pixel(L) *32pixel(H)
Module Dimension	320mm(L) * 160mm(H) * 18mm(D)
Driving Mode	Constant current, 1/16 duty
Module Mask	Pure black mask---high contrast screen
Module Photo	
	



LED Cabinet

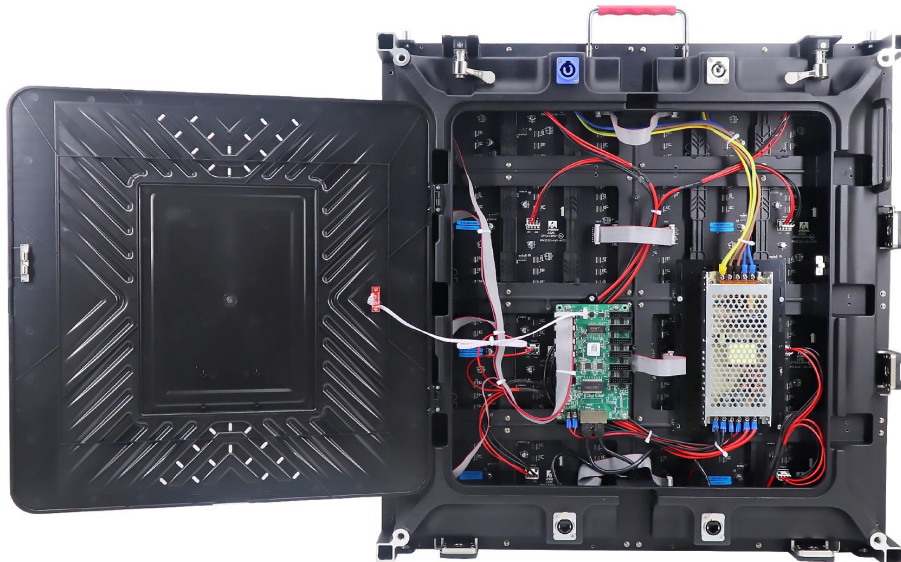




Module Quantity in a Cabinet	2(L) *4(H)
Cabinet Dimension	640(L)*640(H) * 80(D)mm
Cabinet Resolution	128(L) * 128(H)
Cabinet Material	Die-cast aluminum
Cabinet Weight	≈9KG
Electricity Parameter	
Optical Ratings	
Brightness	≥800 cd/m ²
Viewing Angle	140°(Horizontal); 140°(Vertical)
Best Viewing Distance	≥5m
Gray Grade	14 bits
Display Color	4.4 trillion colors
Brightness Adjustment	100 grades by software or automatically by sensor
Operation Power	AC100-240V 50-60Hz Switchable
Max. Power Consumption	312 W/m ²
Avg. Power Consumption	104 W/m ²
Control System	
Frame Frequency	≥60Hz
Refresh Frequency	≥1920Hz / 3840Hz
Input Signal	Composite Video, S-video, DVI, HDMI, SDI, HD-SDI
Control Distance	100m(Ethernet cable); 20KM(optical fiber cable)
Support VGA Mode	800*600, 1024*768, 1280*1024, 1600*1200

Color Temperature	5000—9300 adjustable
Brightness Correction	Pixel by pixel, module by module, cabinet by cabinet
Reliability	
Working Temperature	-20~+60 °C
Storage Temperature	-30~+70 °C
Working Humidity	10%~90% RH
Lifetime	100,000 hours
MTBF	5000 hours
Continuous Operating Time	≥72 hours
Protection Grade	IP31
Out-of-Control Pixel Rate	≤0.01%

Cabinet Details











Package

