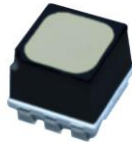


P6.67 Outdoor SMD2727 320x320mm Front Service LED

Module Specification

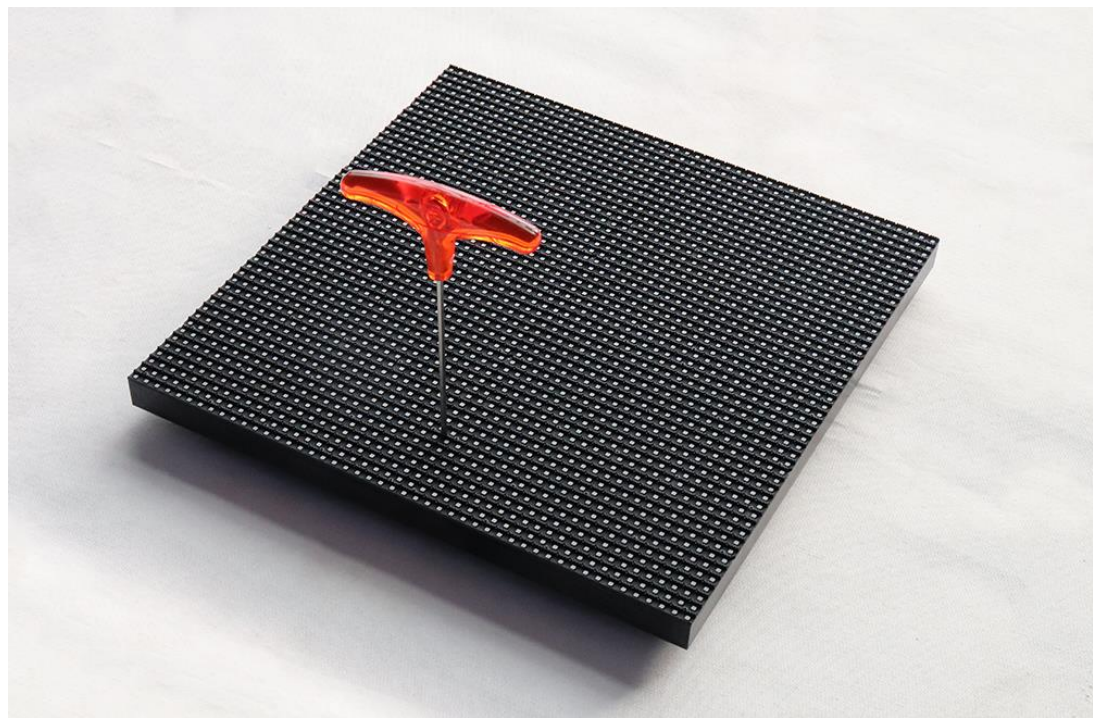
Model No.: **P6.67-OD6S-SMD2727-48x48**

LED Lamp Specification



Color	Package	Intensity	Viewing Angle	Wavelength	Testing Conditions
Red	SMD2727	450mcd	120°	622nm	25°C,15mA
Green		680mcd	120°	530nm	25°C,8mA
Blue		100mcd	120°	472nm	25°C,5mA

Module Photo





Module Parameter

Pixel Pitch	6.67mm
Pixel Configuration	SMD2727
Density	22,498 pixels/m ²
Module Resolution	48pixel(L) * 48pixel(H)
Module Dimension	320mm(L) * 320mm(H) * 35mm(D)
Driving Mode	Constant current, 1/6 duty
Module Mask	Pure black mask---high contrast screen

Electricity Parameter

Optical Ratings

Brightness	≥6,000 cd/m ²
Viewing Angle	120°(Horizontal); 120°(Vertical)
Best Viewing Distance	≥6.67m
Gray Grade	14 bits
Display Color	4.4 trillion colors
Brightness Adjustment	100 grades by software or automatically by sensor
Max. Power Consumption	71.5 W

Control System

Frame Frequency	≥60Hz
Refresh Frequency	≥1,920Hz
Input Signal	Composite Video, S-video, DVI, HDMI, SDI, HD-SDI
Control Distance	100m(Ethernet cable); 20KM(optical fiber cable)
Support VGA Mode	800*600, 1024*768, 1280*1024, 1600*1200

Color Temperature	5000—9300 adjustable
Brightness Correction	Pixel by pixel, module by module, cabinet by cabinet
Reliability	
Working Temperature	-20~+60 °C
Storage Temperature	-30~+70 °C
Working Humidity	10%~90% RH
Lifetime	100,000 hours
MTBF	5000 hours
Continuous Operating Time	≥72 hours
Protection Grade	IP65
Out-of-Control Pixel Rate	≤0.01%

Package





