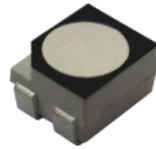


P7.62 Indoor 1/16 Scan SMD3528 1952x976mm

Magnetic Front Service LED Display

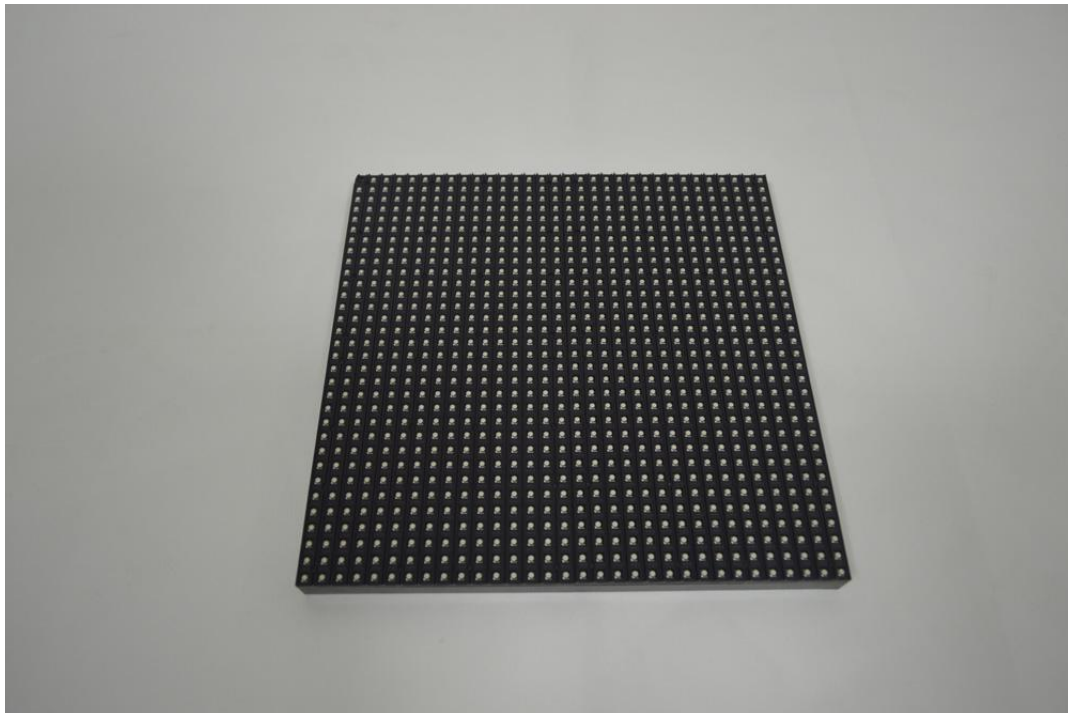
Model No.: **P7.62-I16S-SMD3528-32x32-L1952xH976**

LED Lamp Specification



Color	Package	Intensity	Viewing Angle	Wavelength	Testing Conditions
Red	SMD3528	300mcd	120°	622nm	25°C,20mA
Green		600mcd	120°	523nm	25°C,12mA
Blue		140mcd	120°	470nm	25°C,12mA

Module Photo



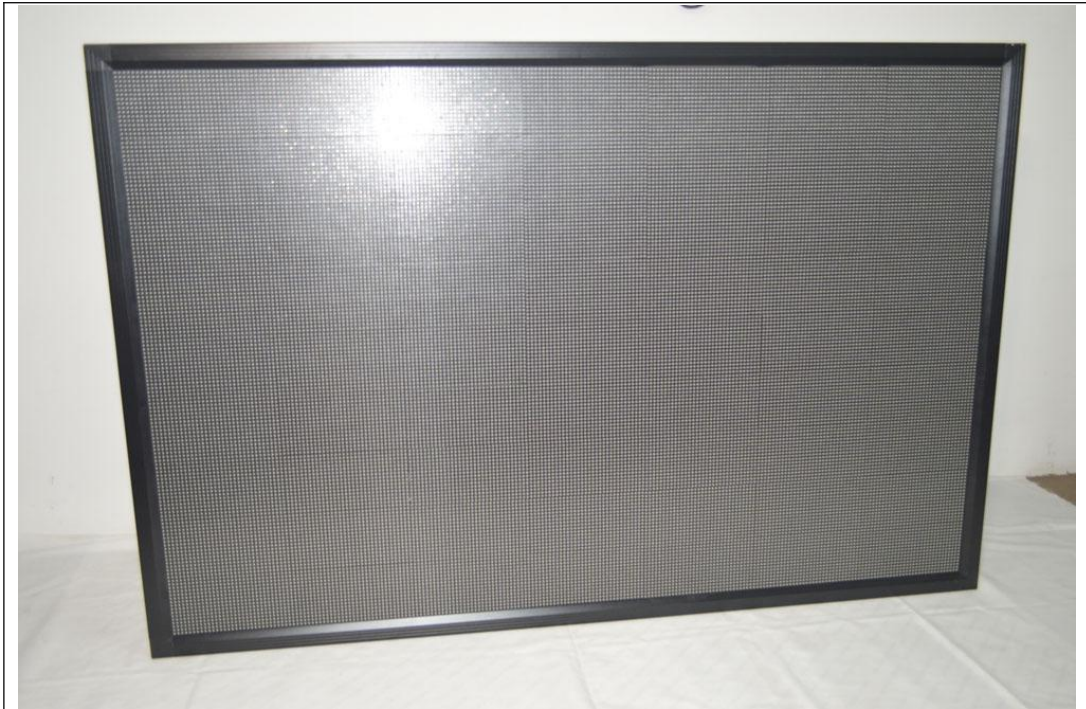


Module Parameter

Pixel Pitch	7.62mm
Pixel Configuration	SMD3528
Density	17,222 pixels/m ²
Module Resolution	32pixel(L) *32pixel(H)
Module Dimension	244mm(L) * 244mm(H) * 18mm(D)
Driving Mode	Constant current, 1/16 duty
Module Mask	Pure black mask---high contrast screen

LED Cabinet

--	--



Module Quantity in a Cabinet	8(L) *4(H)
Display Size	1952(L) *976(H)mm
Border Size	45mm
Cabinet Dimension	2042(L) *1066(H) *90(D)mm
Cabinet Resolution	256(L) * 128(H)
Cabinet Material	Aluminum Frame
Cabinet Weight	≈38KG

Electricity Parameter

Tel: +86-755-32930690

Fax: +86-755-32930691

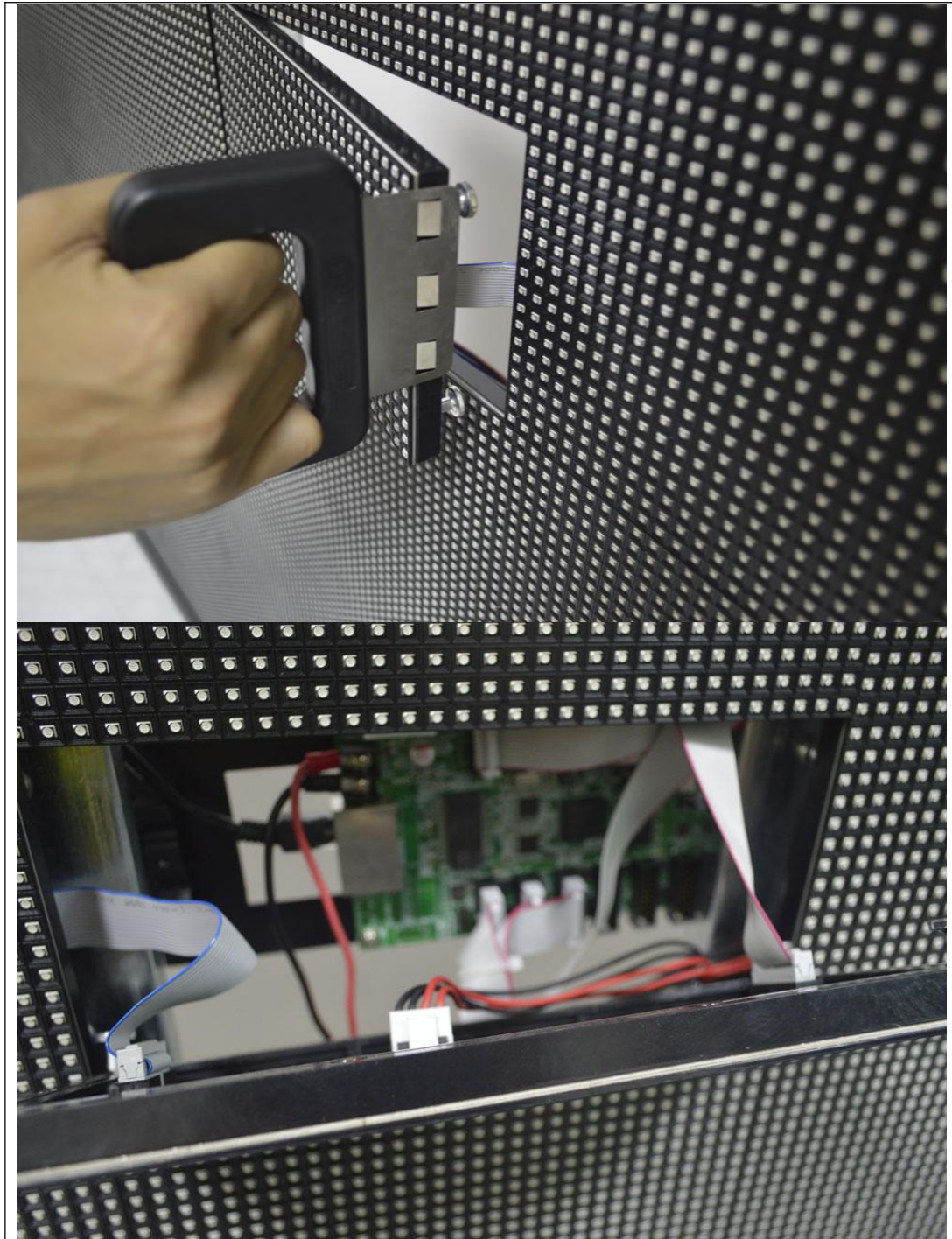
E-mail: manager@eagerled.com

Website: <http://www.eagerled.com>

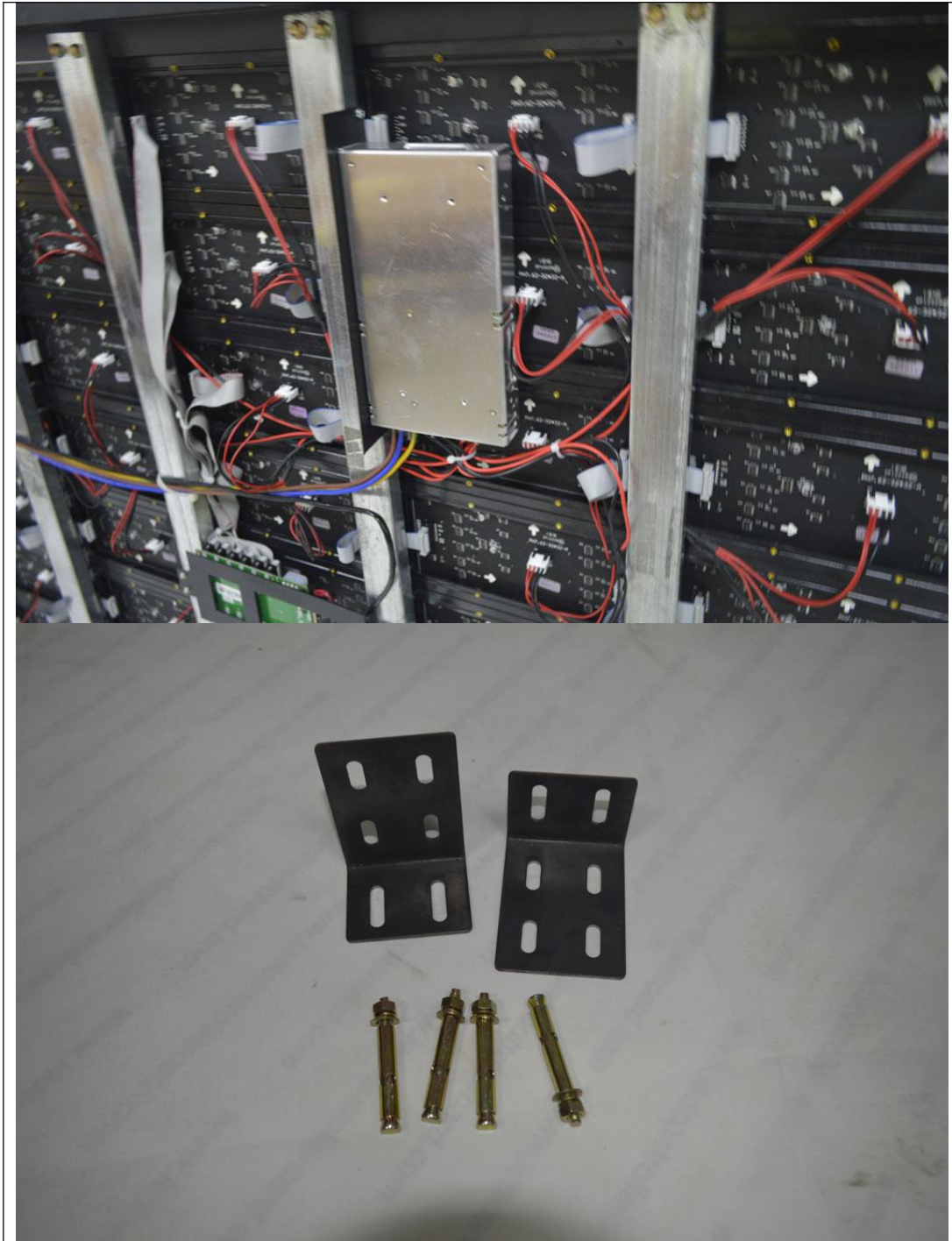
Address: No.257, Shangwu Avenue, Tianxin Community, Shiyan Town, Bao'an District, Shenzhen, China 518108

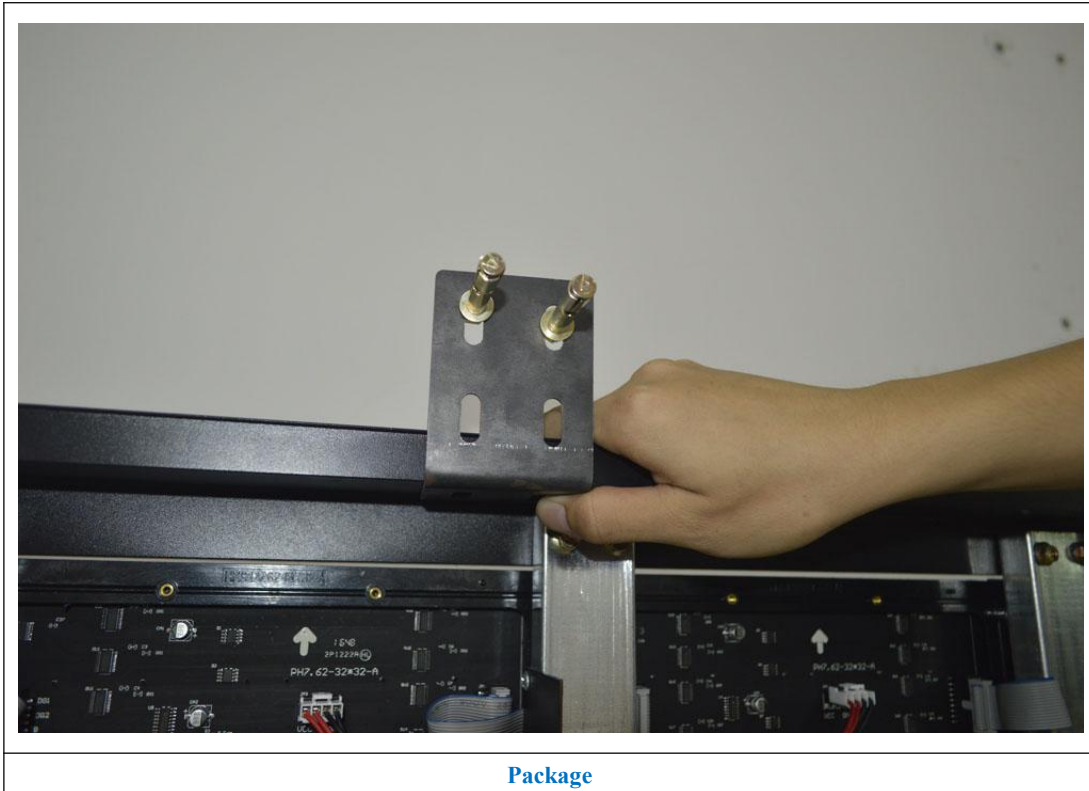
Optical Ratings	
Brightness	≥800 cd/m ²
Viewing Angle	120°(Horizontal); 120°(Vertical)
Best Viewing Distance	≥7.62m
Gray Grade	14 bits
Display Color	4.4 trillion colors
Brightness Adjustment	100 grades by software or automatically by sensor
Operation Power	AC100-240V 50-60Hz Switchable
Max. Power Consumption	250 W/m ²
Avg. Power Consumption	90W/m ²
Control System	
Frame Frequency	≥60Hz
Screen Refresh Frequency	≥1920Hz
Input Signal	Composite Video, S-video, DVI, HDMI, SDI, HD-SDI
Control Distance	100m(Ethernet cable); 20KM(optical fiber cable)
Support VGA Mode	800*600, 1024*768, 1280*1024, 1600*1200
Color Temperature	5000—9300 adjustable
Brightness Correction	Pixel by pixel, module by module, cabinet by cabinet
Reliability	
Working Temperature	-20~+60 °C
Storage Temperature	-30~+70 °C
Working Humidity	10%~90% RH
Lifetime	100,000 hours
MTBF	5000 hours
Continuous Operating Time	≥72 hours
Protection Grade	IP31
Out-of-Control Pixel Rate	≤0.01%
LED Cabinet	











Package



