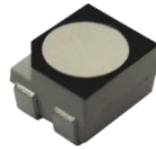


# P7.62 Indoor 1/16 Scan SMD3528 976x976mm LED

## Display

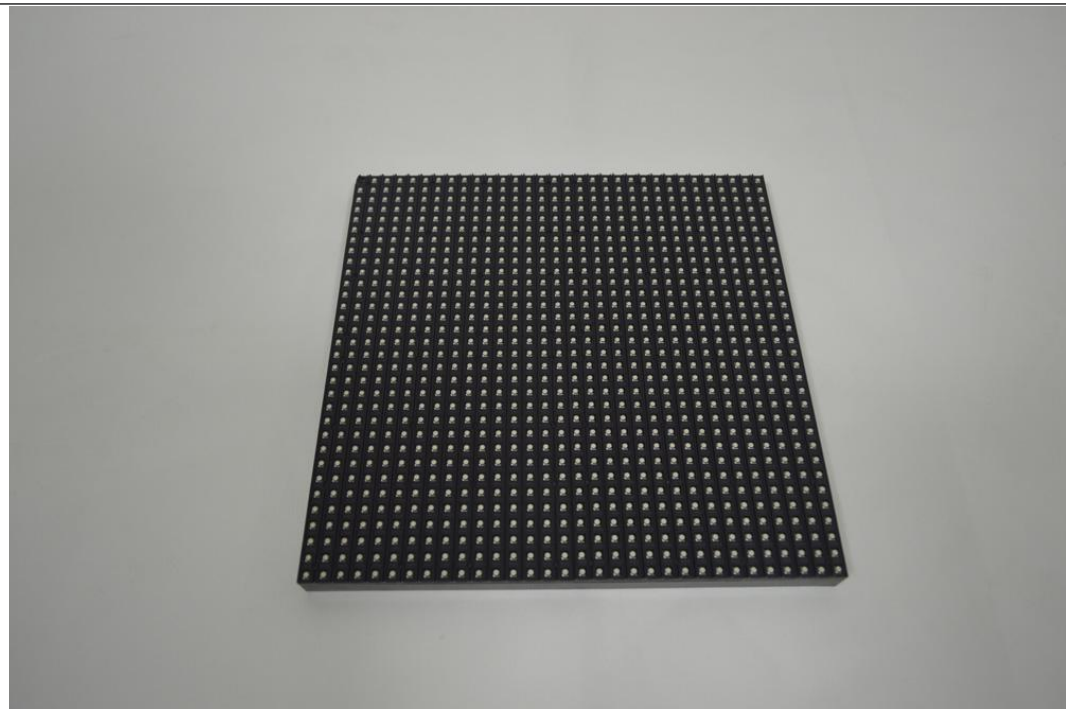
Model No.: P7.62-I16S-SMD3528-32x32-L976xH976

### LED Lamp Specification



Color	Package	Intensity	Viewing Angle	Wavelength	Testing Conditions
Red	SMD3528	300mcd	120°	622nm	25°C,20mA
Green		600mcd	120°	523nm	25°C,12mA
Blue		140mcd	120°	470nm	25°C,12mA

### Module Photo





### Module Parameter

Pixel Pitch	7.62mm
Pixel Configuration	SMD3528
Density	17,222 pixels/m <sup>2</sup>
Module Resolution	32pixel(L) *32pixel(H)
Module Dimension	192mm(L) * 192mm(H) * 18mm(D)
Driving Mode	Constant current, 1/16 duty
Module Mask	Pure black mask---high contrast screen

### LED Cabinet



Module Quantity in a Cabinet	4(L) * 4(H)
Cabinet Dimension	976(L)*976 (H)* 90(D)mm
Cabinet Resolution	128(L) * 128(H)
Cabinet Material	Steel
Cabinet Weight	≈34KG
<b>Electricity Parameter</b>	
<b>Optical Ratings</b>	

Brightness	≥800 cd/m <sup>2</sup>
Viewing Angle	120°(Horizontal); 120°(Vertical)
Best Viewing Distance	≥7.6m
Gray Grade	14 bits
Display Color	4.4 trillion Colors
Brightness Adjustment	100 grades by software or automatically by sensor
Operation Power	AC100-240V 50-60Hz Switchable
Max. Power Consumption	250 W/m <sup>2</sup>
Avg. Power Consumption	90W/m <sup>2</sup>
<b>Control System</b>	
Frame Frequency	≥60Hz
Refresh Frequency	≥1,920Hz
Input Signal	Composite Video, S-video, DVI, HDMI, SDI, HD-SDI
Control Distance	100m(Ethernet cable); 20KM(optical fiber cable)
Support VGA Mode	800*600, 1024*768, 1280*1024, 1600*1200
Color Temperature	5000—9300 adjustable
Brightness Correction	Pixel by pixel, module by module, cabinet by cabinet
<b>Reliability</b>	
Working Temperature	-20~+60 °C
Storage Temperature	-30~+70 °C
Working Humidity	10%~90% RH
Lifetime	100,000 hours
MTBF	5000 hours
Continuous Operating Time	≥72 hours
Protection Grade	IP31
Out-of-Control Pixel Rate	≤0.01%
<b>Cabinet Details</b>	













Package

