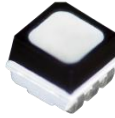


P8 Outdoor 1/4 Scan SMD3535 960x960mm Dual Maintenance LED Display

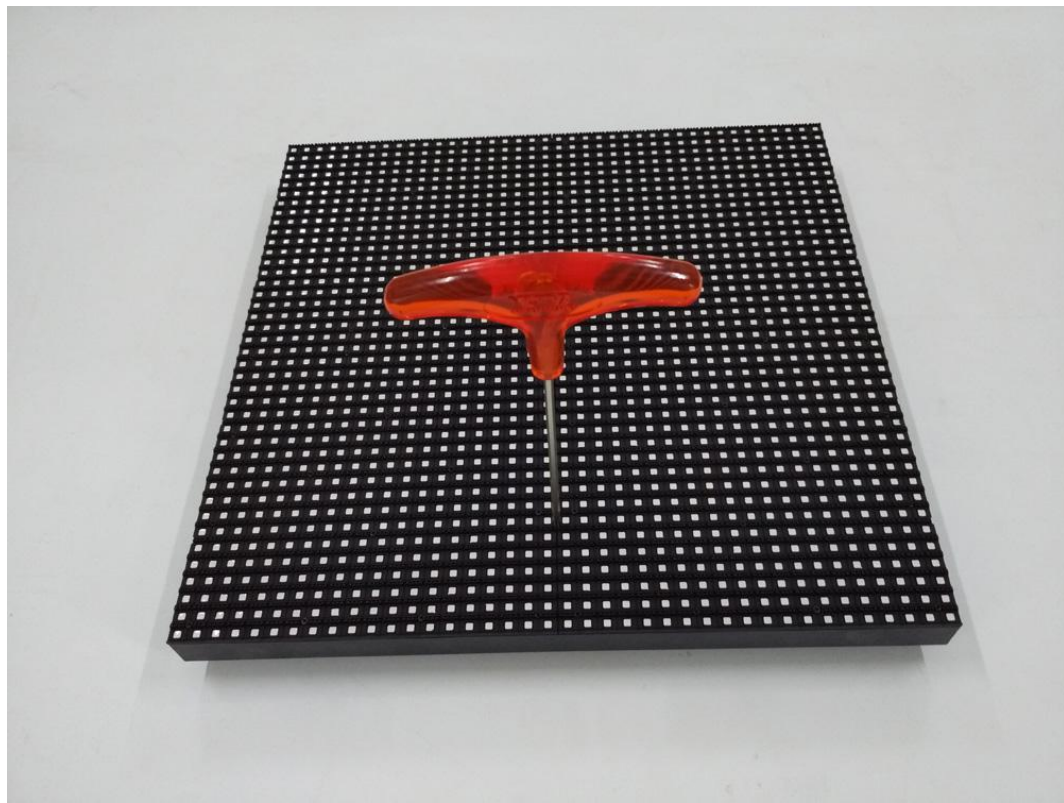
Model No.: **P8-OD4S-SMD3535-40x40-L960xH960**

LED Lamp Specification



Color	Package	Intensity	Viewing Angle	Wavelength	Testing Conditions
Red	SMD3535	800-1100mcd	120°	620-625nm	25°C,20mA
Green		1600-2250mcd	120°	515-530nm	25°C,20mA
Blue		350-500mcd	120°	465-475nm	25°C,20mA

Module Photo





Module Parameter

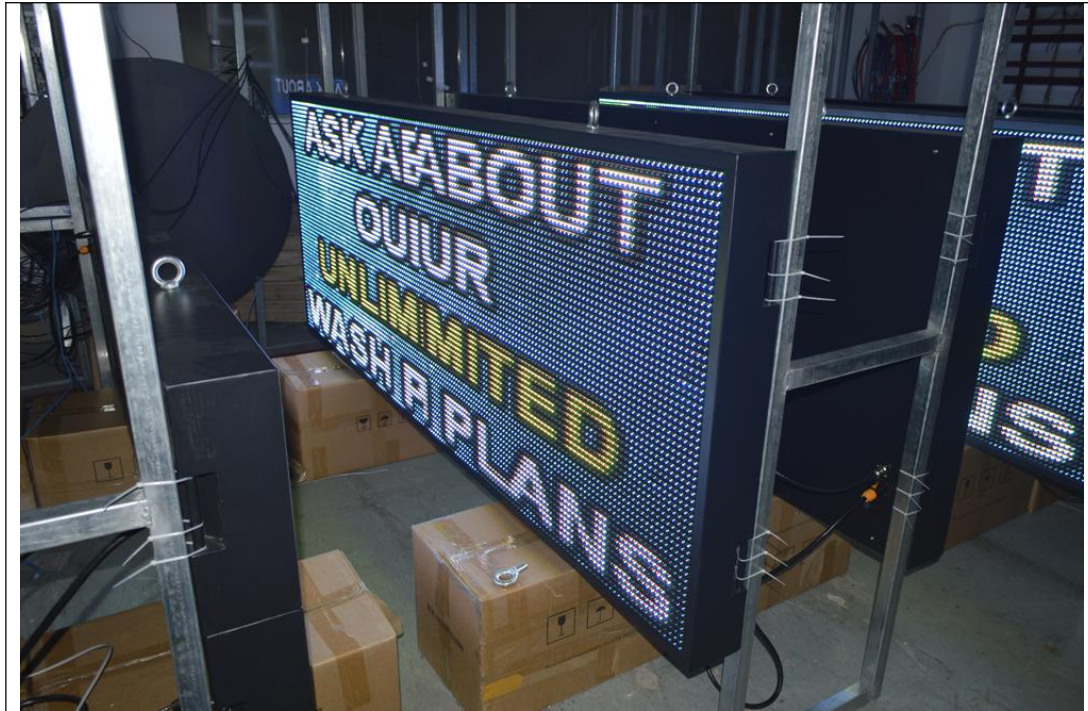
Pixel Pitch	8mm
Pixel Configuration	SMD3535
Density	15,625 pixels/m ²
Module Resolution	40pixel(L) * 40pixel(H)
Module Dimension	320mm(L) * 320mm(H) * 35mm(D)
Driving Mode	Constant current, 1/4 duty
Module Mask	Pure black mask---high contrast screen

LED Cabinet

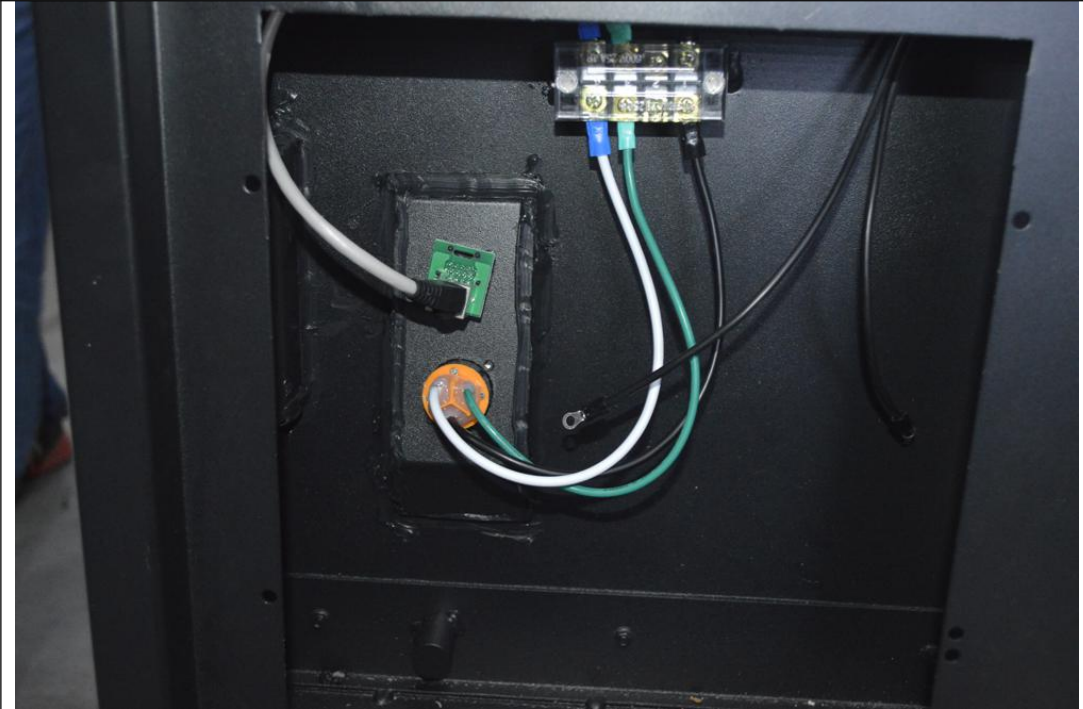


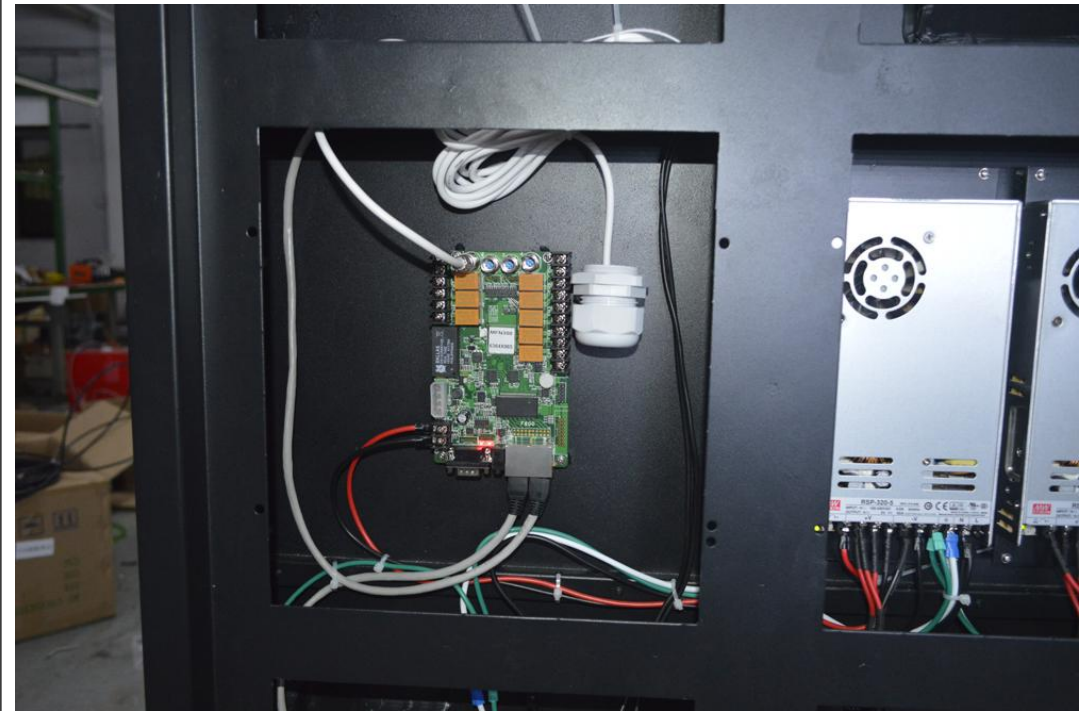
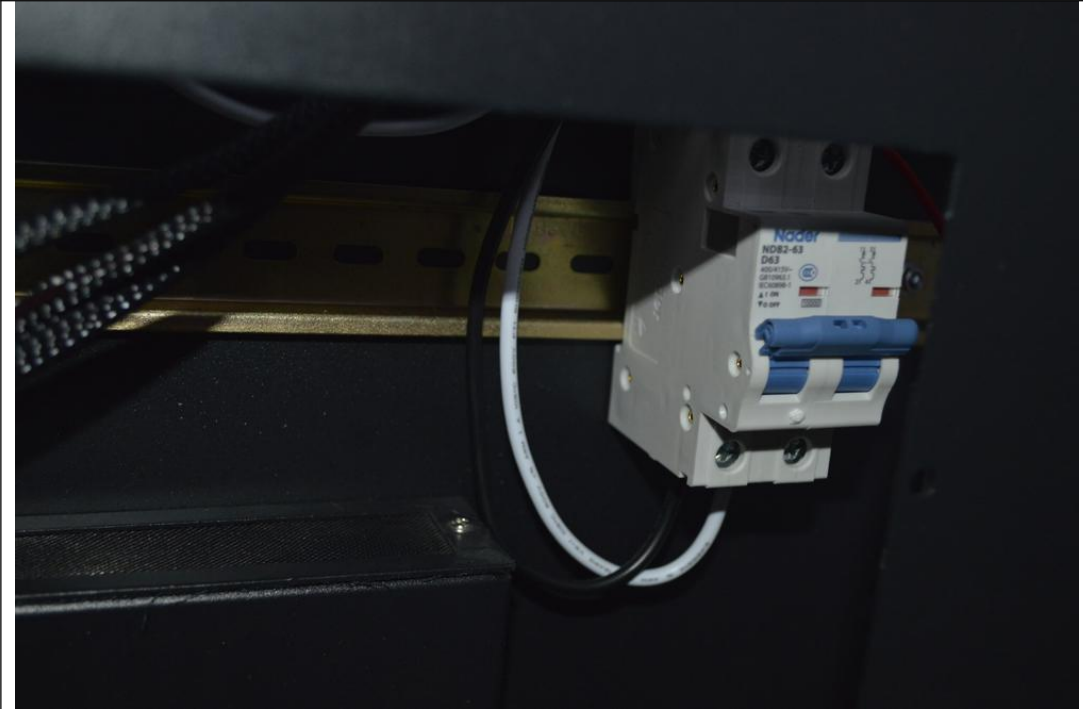
Module Quantity in a Cabinet	3(L) * 3(H)
Cabinet Dimension	960(L) * 960(H) * 150(D)mm
Cabinet Resolution	120(L) * 120(H)
Cabinet Material	Steel
Cabinet Weight	≈40.5KG
Electricity Parameter	
Optical Ratings	
Brightness	≥6,500 cd/m ²

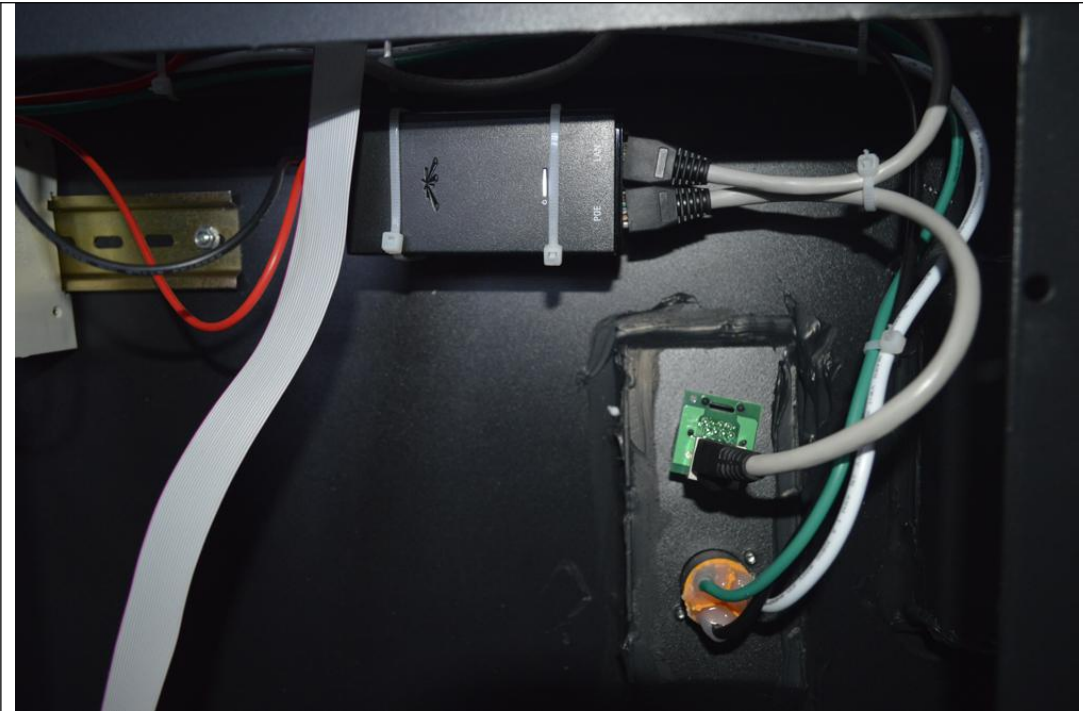
Viewing Angle	120°(Horizontal); 120°(Vertical)
Best Viewing Distance	≥8m
Gray Grade	14 bits
Display Color	4.4 trillion Colors
Brightness Adjustment	100 grades by software or automatically by sensor
Operation Power	AC100-240V 50-60Hz Switchable
Max. Power Consumption	900 W/m ²
Avg. Power Consumption	300W/m ²
Control System	
Frame Frequency	≥60Hz
Refresh Frequency	≥1,920Hz
Input Signal	Composite Video, S-video, DVI, HDMI, SDI, HD-SDI
Control Distance	100m(Ethernet cable); 20KM(optical fiber cable)
Support VGA Mode	800*600, 1024*768, 1280*1024, 1600*1200
Color Temperature	5000—9300 adjustable
Brightness Correction	Pixel by pixel, module by module, cabinet by cabinet
Reliability	
Working Temperature	-20~+60 °C
Storage Temperature	-30~+70 °C
Working Humidity	10%~90% RH
Lifetime	100,000 hours
MTBF	5000 hours
Continuous Operating Time	≥72 hours
Protection Grade	IP65(front), IP54(rear)
Out-of-Control Pixel Rate	≤0.01%
Cabinet Details	

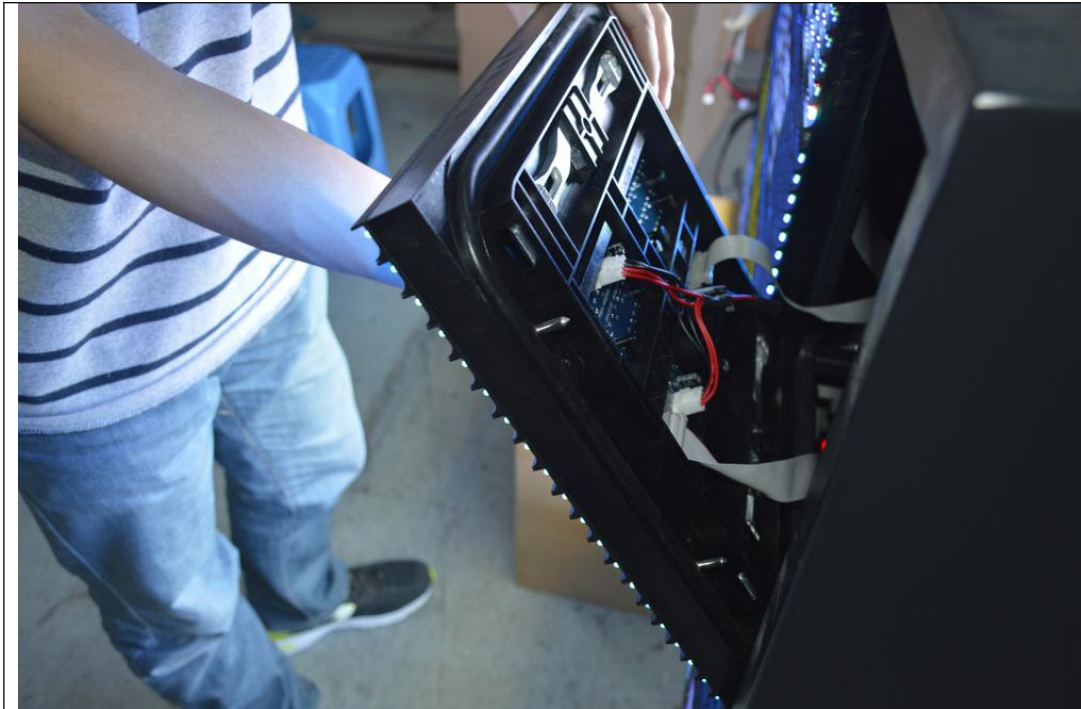














Package



