

Specifications of Outdoor SMD P10 led display

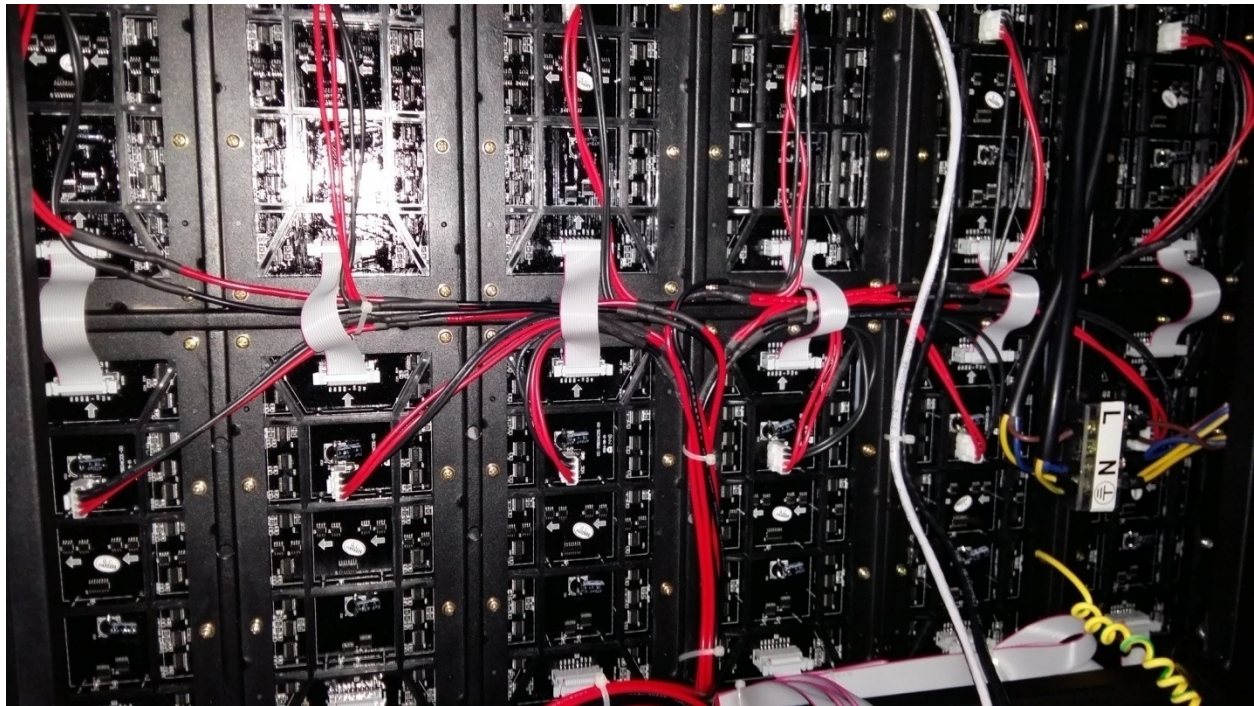
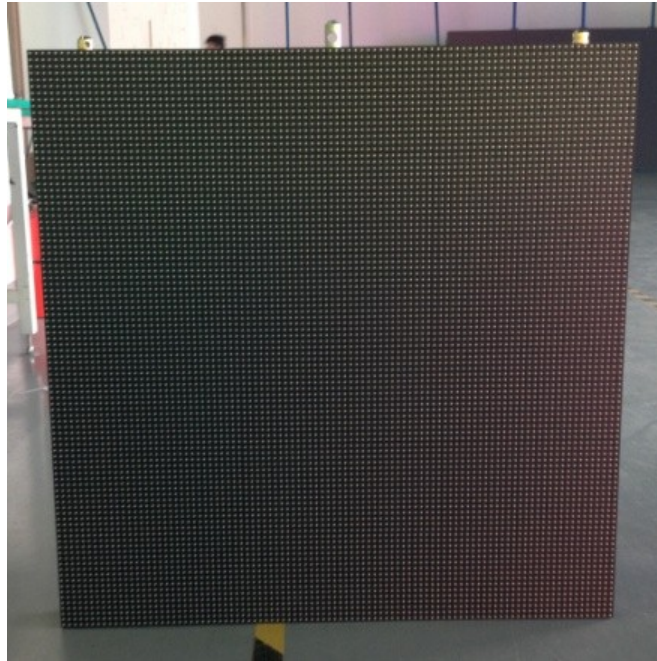
Module

P10 SMD Outdoor full-color



| Module | |
|------------------------|--------------------------|
| Dot Pitch (mm) | 10mm |
| Module Size(W×H) | 320mm*160mm |
| Pixel Configuration | 1R1G1B |
| Module Resolution(W×H) | 32*16(dot) |
| Density | 10000 dot/m ² |
| LED Type | SMD3535 |
| Brightness | ≥7500 CD/m ² |

Cabinet



| | |
|---------------------------|----------------------------|
| Cabinet Size (W*H) | 960mm*960mm (As per Req*.) |
| Cabinet resolution | 96*96(dot) |
| Viewing angle | H:140°/ V:120° |

| | |
|----------------------------------|--|
| Protective Grade | IP65 |
| Average Power consumption | 800 Watt/cabinet Total Average power is 800kw |
| Max Power consumption | 1500 Watt/cabinet Total Average power is 1500watt (@FULL BRIGHTNESS) |
| Best View distance | 9-110m |
| Weight(kg/pc) | ≤ 48kg/cabinet (included power supply ,all cables) Total Weight:48kg |
| Material | GI Steel + MS(As per Req*.) |

Screen Parameter

| | |
|--------------------------|---|
| Screen Area(m) | $0.96\text{m} \times 0.96\text{m} = 0.9216\text{m}^2$ |
| Pixel density | 9216 dots/m² |
| Screen Resolution | 96dots ×96 dots |
| Screen pixels | 9216 dots |
| Cabinet quantity | 1 cabinets |

| | |
|------------------------------|---|
| Module quantity | 18 Module /cabinet |
| Operation Temperature | Working: -30°C ~ 65°C;Storage:-40°C ~ 80°C |
| Operating Humidity | Working: 10 ~ 90% RH; Storage: 10 ~85% RH |

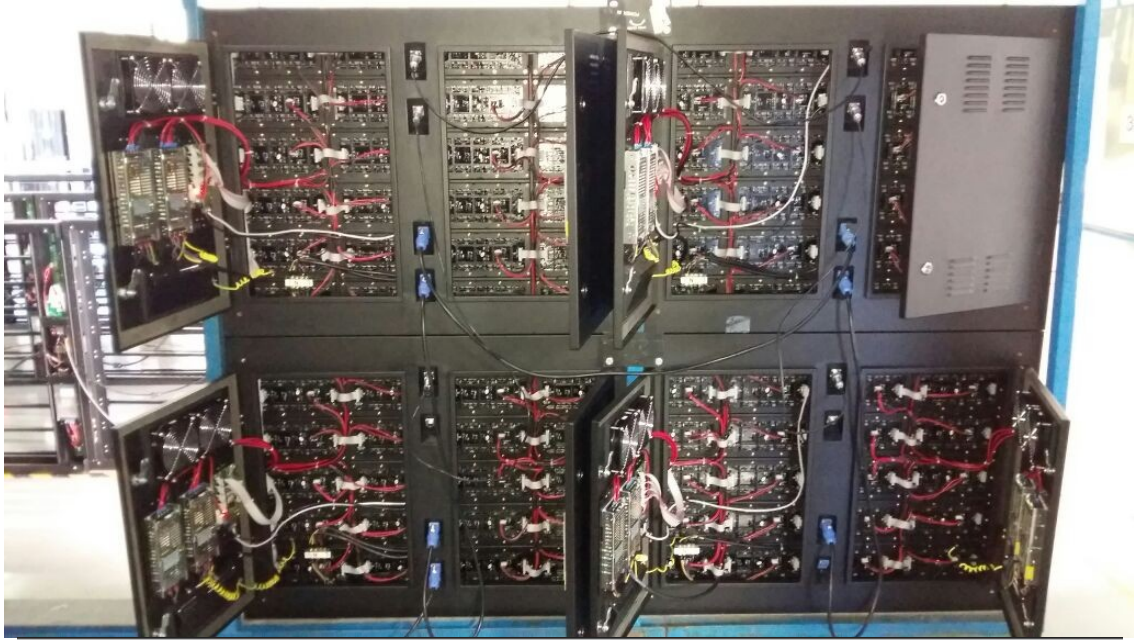
| | |
|--------------------------|---------------------------------------|
| Driving method | 1/4 scan |
| Protection Degree | front: PI 65 / back: PI 65 |
| Working voltage | AC110V~240V |
| Colors | 687 Million Colors |
| Refresh rate | 1800Hz ≤ refresh rate ≤ 2200Hz |

| | |
|-------------------|--------------------------------------|
| Smoothness | $\pm 0.1\text{mn}$ |
| MTBF | > 50,000hours |
| Life-span | > 100,000 hours |

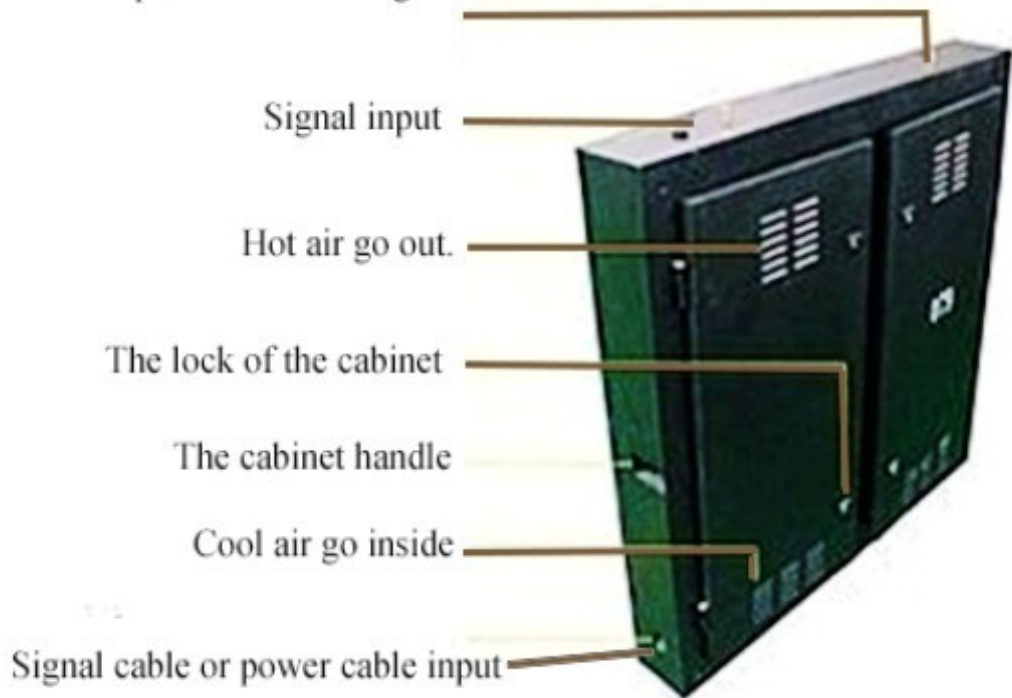
Included

1. Power Modules
2. Fans
3. Waterproof External Power cables & connectors
4. Mounting/locking plates between cabinets
5. Inter-connecting cables & ribbons (both power and signal)

Cabinet back view



Cabinet up and down fixing stand.



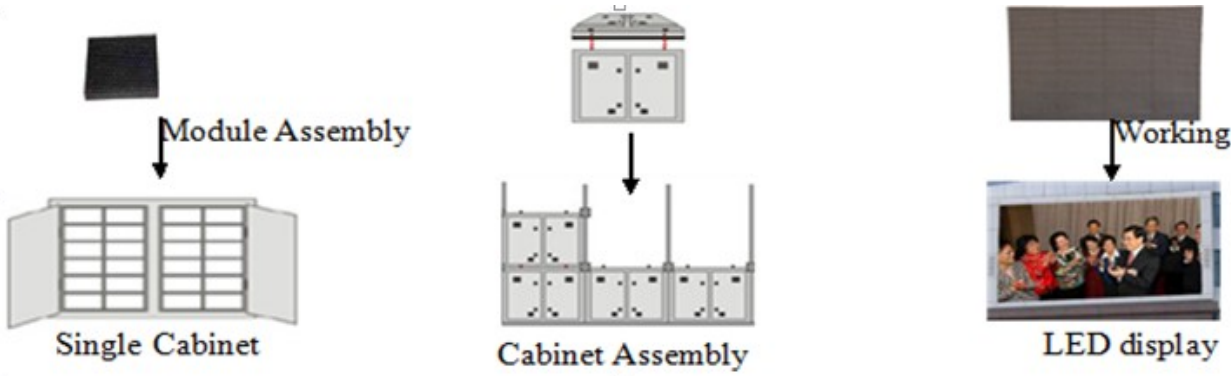


Installation on the project site





Configuration



Photos of led display





Packaging



| | |
|---------------------|---|
| Packaging | 3 pcs of wooden case(3 cabinets in 1 case) |
| Total Weight | Weight of one wooden case:170kg |
| Total Volume | Volume of one Flight case: 0.65mX1.1mX1.2m (L*W*H) |

| Control system and LED | |
|-------------------------------|---|
| Adopted Control System | PCTV Board + DVI Board + Control Board + Network cable Transmission |
| Video Signal | RF、S-Video、RGB、RGBHV、YUV、YC、COMPOSITION etc |
| LED parametr | R: (620-623nm) G: (519-522nm) B: (466-467 nm) |
| | R: IV(800-1200mcd) G: IV(1800-2300mcd) B: IV(450-520mcd) |
| Brightness Level | Manual adjustment: 256 levels for R, G, B |
| | Automatic adjustment: 16 grades for each color |

Training

Factory/On Site:

We can send a technician team to help installation of the led screen and train the dedicate team of client about the setup and backup LEDs.

Document

- 1) Installation Manual
- 2) LED software Installation, setup, operation Manual
- 3) Support Frame/structure for LED Display guideline
- 4) Safety/Precaution Manual
- 5) Training Manaul

Remarks

| |
|--|
| Delivery terms:FOB Mumbai ,this offer is valid for 30days from the sending date. |
| Payment terms:70% deposit, 30% before shipment. |
| Shipping cost is not included |
| Steel structure is not included in the price.Meanwhile we can offer steel structure if needed. |
| Warranty:All parts 1 years warranty |
| Lead time:10-22 workdays after payment |

Our Services

OUR COMPANY provides product debugging and maintenance service for our LED display. such as

1 . After - sales service :

- 1) Service principles : response in time, solve problems as soon as and ensure the use.
- 2) Service period : In the Maintenance period of the LED screen body , free of all maintenance charges ; After Maintenance period , only charge the material cost fees free of manual work fees.
- 3) services scope : If the users find any problem that cannot be solved, please contact with our company , we can response in 24 hours. In order to shorten the maintenance time, our Company will deploy some spare parts such as power and chips etc.
- 4) Under normal use and storage, Our Company will be responsible for the equipments.
- 5) Steel structure is not included in the price. Mean while we can offer steel structure if needed.

Company Profile

1. **Fully automatic production lines, Advanced production equipment, Strong R&D Team.2**
2. **Products have been exported to many countries all over the world, Such as Brazil,Russia,USA,Australia, Germany,Canada, etc.**
3. **Service before sale: technical support, design schemes; Training after order:software,operate,maintain.**