







## Full Color Asynchronous Controller Card

HD-A30/ HD-A30+ -----Special for small Dot Pitch Display

**Features**

- 1.Support Indoor & outdoor full-color & single/dual color module & Virtual module
- 2.Support Video,Animation, Graphics,Images,Text, etc.
- 3.Support 0~65536 gray level
- 4.U-disk to infinitely expand the memory storage , U-disk plug-and-play
- 5.Support Standard two-track stereo output
- 6.No need set IP, HD-A30/ A30+ could be identified by controller ID automatically
- 7.Support network cluster management and Internet/3G remote management.

**Controlling System Configuration**

Products	Type	Photo	Functions
Asynchronous sending card	HD-A30		Asynchronous core parts Itself have 4GB memory
	HD-A30+		
Receiving Card	HD-R500		Connected with screen, Showing program in screen
	HD-R501		
Control Software	HDPlayer		Management program
Accessories	HUB		HUB connected with data cable

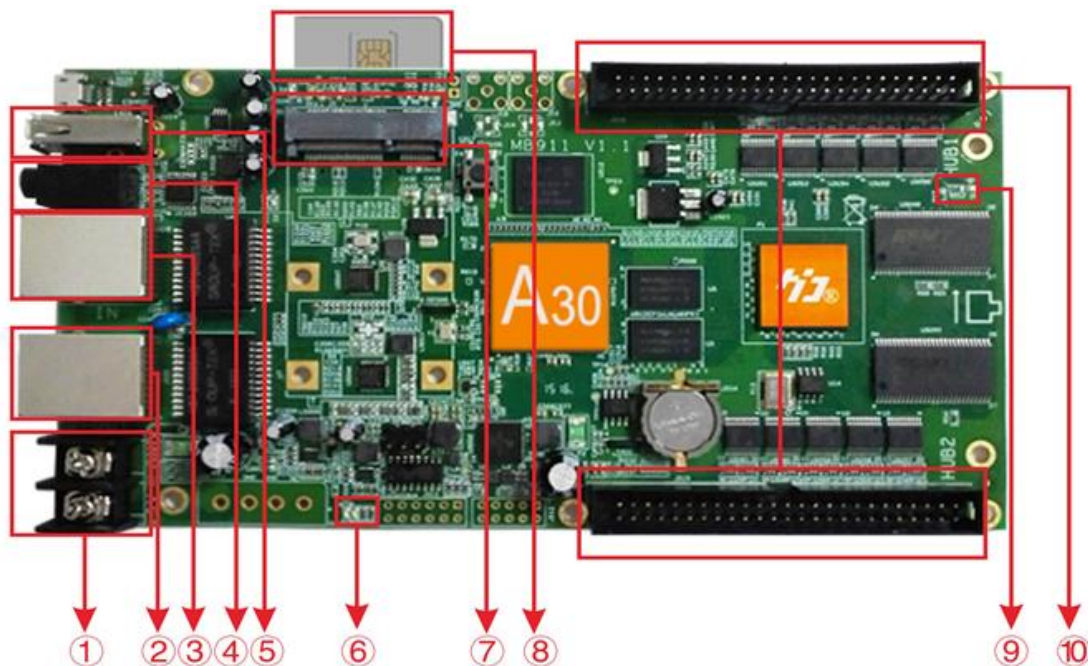
## Parameter

Type	Indoor & outdoor full-color & single/dual color module & Virtual module Support MBI5041/5042, MBI5050, MY9221, MY9268 etc and PWM
Scan mode	Support 1-32 scan randomly and static
Sending card Control range	HD-A30: 1024W*512H HD-A30+: 1024W*512 2048W*256H 512W*1024H
Receiving card Range(1PCS)	HD-R500: 256W*128H HD-R501: 256W*192H Usually 1PCS Cabinet use 1PCS Receiving card
Gray Scale	0-65536
Video format	AVI, WMV, MP4, 3GP, ASF, MPG, FLV, F4V, MKV, MOV, DAT, VOB, TRP, TS, WEBM, etc.
Image format	BMP, GIF, JPG, JPEG, PNG, GIF, PBM, PGM, PPM, XPM, XBM etc.
Text	Text and Image being edited directly. Document like Word, Excel, PPT, PPTX ;txt, rtf, html etc. can be edited as well after importing directly.
Time	Classic Analog clock, digital clock and various of clock with image background
Audio output	Double track stereo audio output
Memory	4G Flash memory ; Indefinite expanding of U-disk memory.
Communication	10/100M/1000M RJ45 Ethernet; 3G; Internet; LAN
Working Voltage	4.5-5.5V
Working Temperature	-20℃-80℃
Port	<b>IN:</b> 5V Power x1, 10/100M/1000M RJ45 x1, USB 2.0 x1, Testing button x1 <b>OUT:</b> 1000M RJ45 X1, Audio x1, 50PIN Port x 2
Software	HDPlayer

### Model Selection Reference

Model	Control range Pixel (Width*Height)	3G sub model
HD-A30	1024W*512H ( Itself also can be working as 1PCS receiving card )	HD-A30W ( WCDMA ) HD-A30C ( CDMA 2000 )
HD-A30+	1024W*512H / 2048*256 / 512W*1024H (It self can't work as receiving card)	HD-A30+W ( WCDMA ) HD-A30+C ( CDMA 2000 )
HD-R500	Suggest: 256W*128H	/
HD-R501	Suggest: 256W*192H	

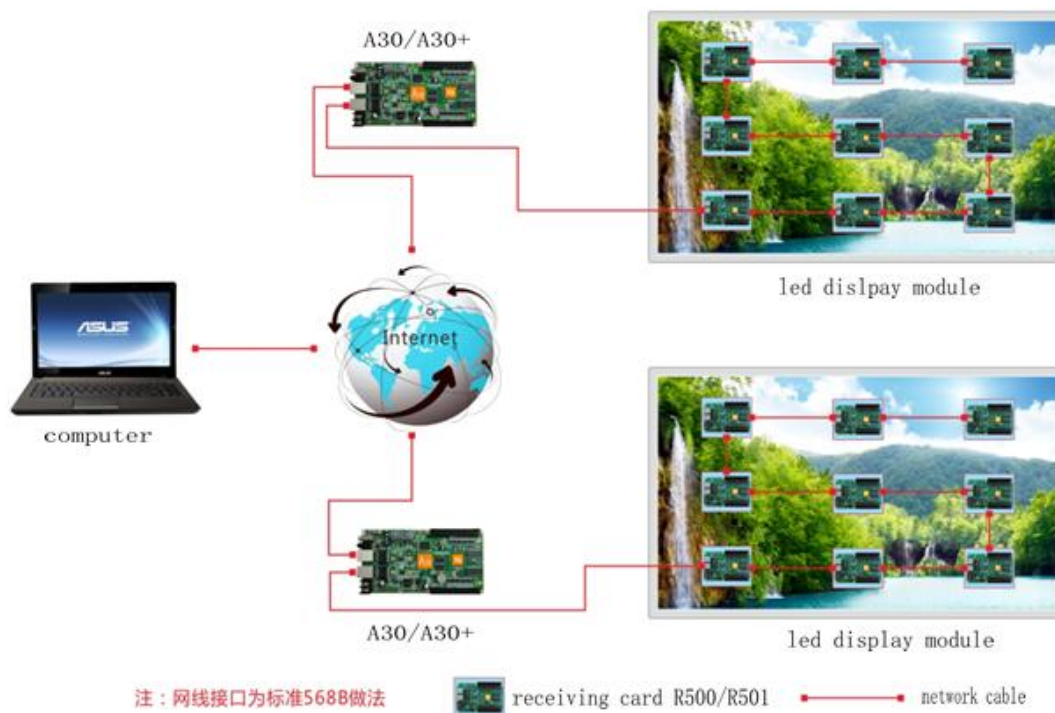
### Port Instruction



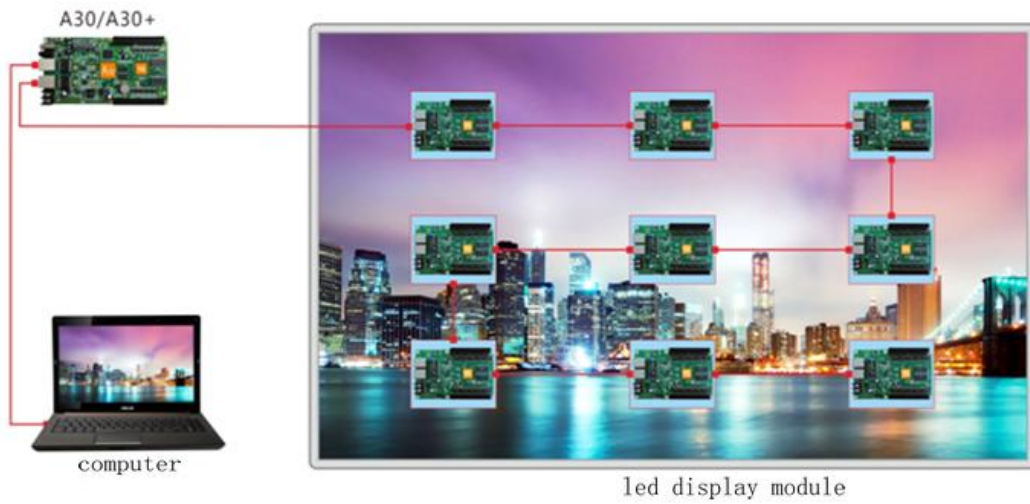
- ① Power Supply port, 2 Pin Power supply terminal connected to 5v power supply
- ② Output network port, 1000M network port, working status :D13 green lamp normally on, D9 green lamp flicker
- ③ :Input Network port,1000M network port, working status: D11 green lamp normally on, D2 green lamp flicker

- ④ :Audio output port, support standard two-track stereo output
- ⑤ :USB port, connected to USB device, e.g. U-disk, Mobile hard disk,etc.
- ⑥ :Power lamp-D4 green, working status: Normally on,  
Run Lamp-D17 green, working status: Flicker
- ⑦ : 3G model port
- ⑧ :SIM Card slot, inserted with 3G/4G card for 3G/4G internet solutions.
- ⑨ :Display lamp-D7 green, working status: Flicker
- ⑩ :50pin row needles port ,connected to various screen through hub board  
Note: A30+ has not this kind of port

### Application



### Unified Management of More Led Display through Internet



注：网线接口为标准568B做法



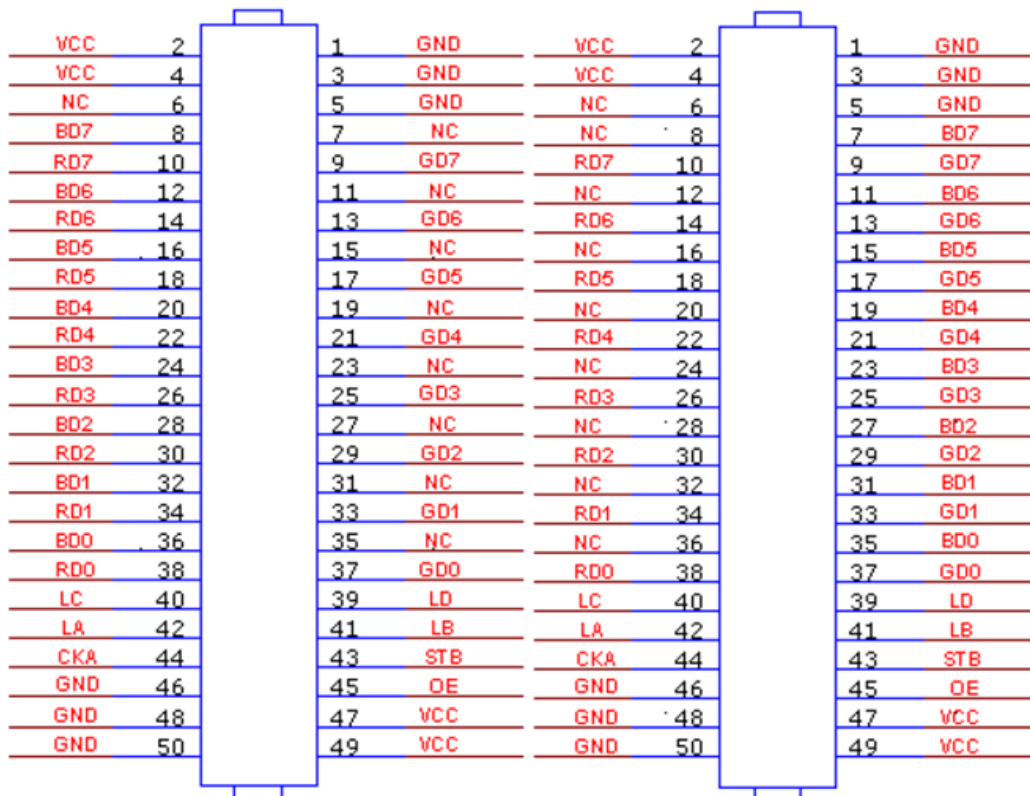
receiving card R500/R501



network cable

One Display--- Connected to Computer and Control Card By Network Cable

Support 16 "RGBR" Parallel Data, definition as below:

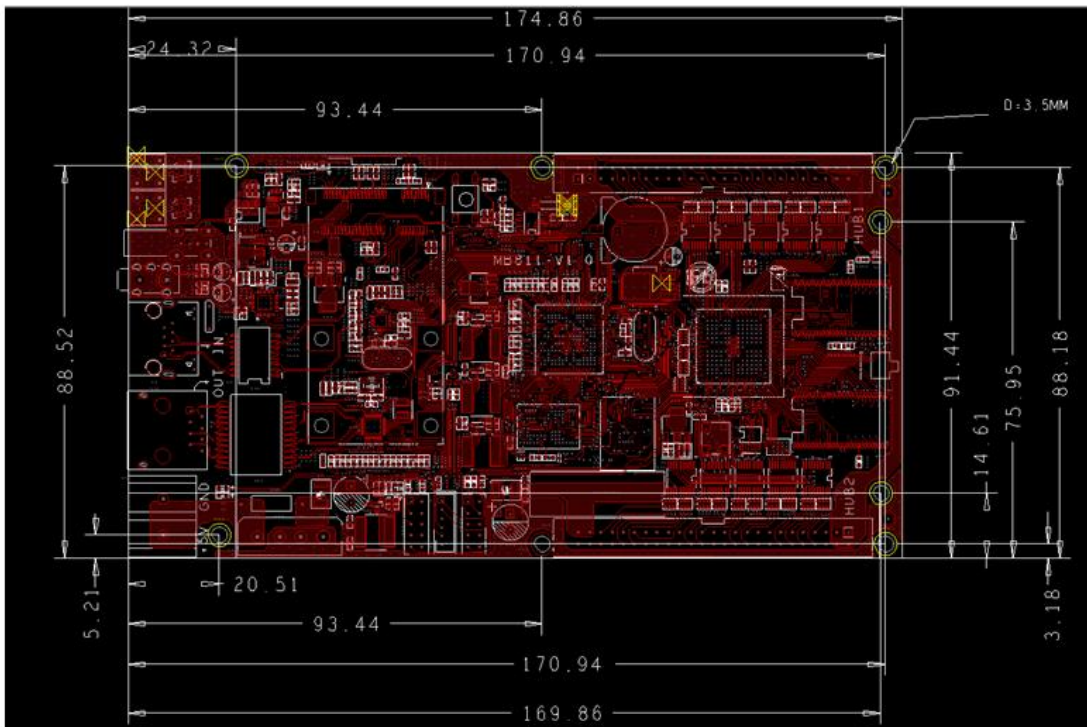


General Full Color Port 1

General Full Color Port 2

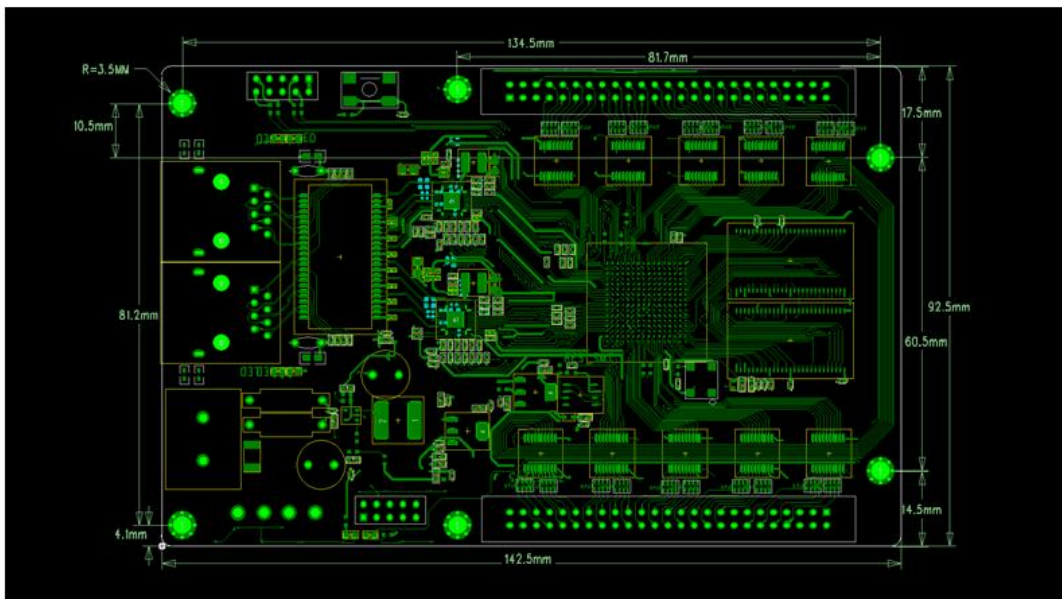
Dimension Chart

1) HD-A30/A30+

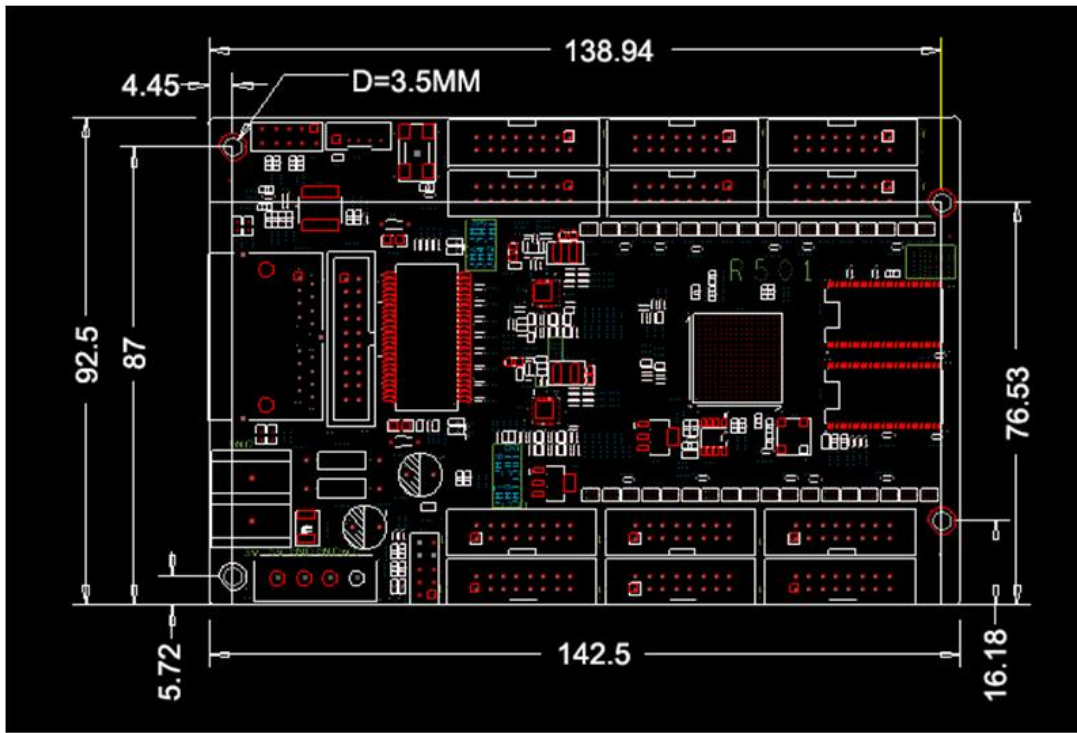


Dimension Chart for HD-A30/A30+

2) Receiving Card



Dimension Chart for R500



Dimension Chart for R501