

# Product Specification

**Single color LED 4G control card**

**HD-G62**

V7.0.1 20220308

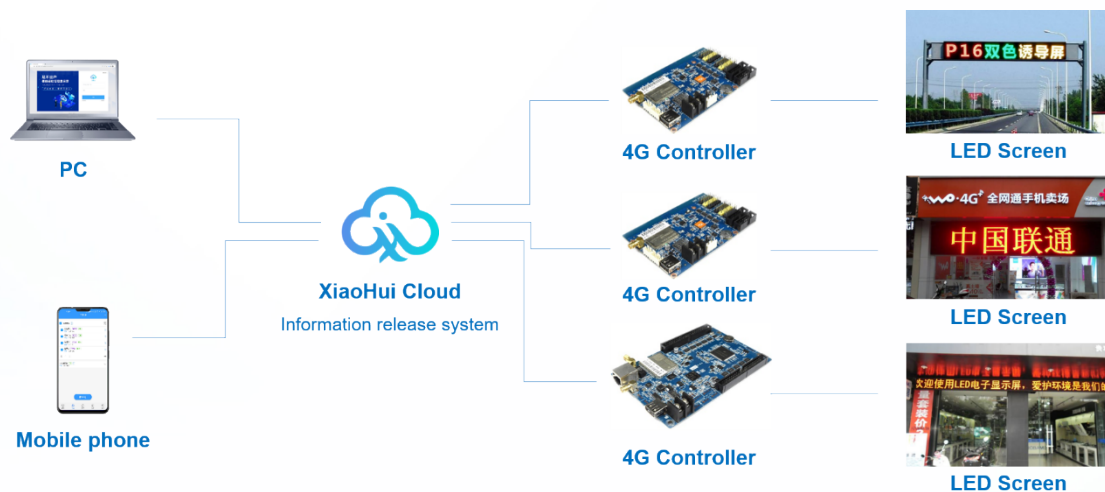
## I . Overview

HD-G62 is a 4G control card for door headline screens, storefront signs, traffic guidance and other occasions, and supports remote update programs on the XiaoHui Cloud. In addition, it also supports USB interface to update programs. G62 is easy to operate, rich in effects, and supports simple pictures, texts, clocks, timings, etc.

Application software: HD2020, XiaoHui Cloud.

## II. Connection Diagram

G62 is connected to XiaoHui Cloud through the 4G network, and the program can be updated through XiaoHui Cloud remotely.



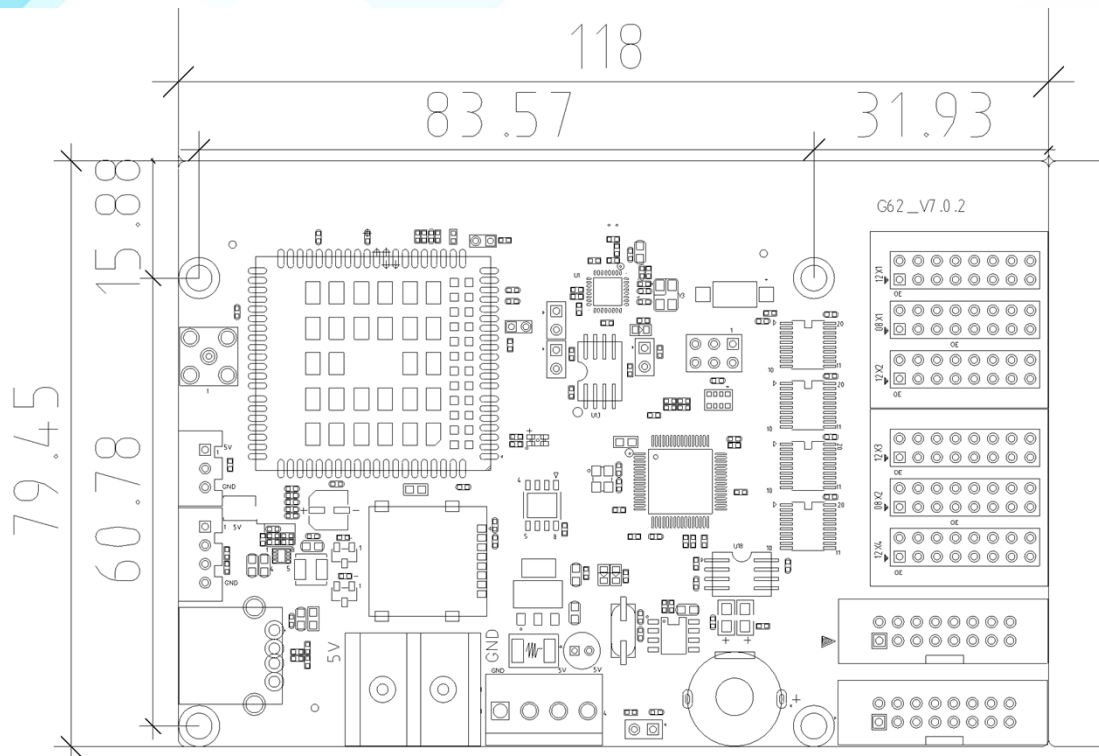
## III. Product Features

1. Integrated 4G module, the transmission speed is faster and more stable;
2. Support program borders, area borders, and custom borders;
3. Support a variety of text special effects to meet most application scenarios;
4. Support font hollow, stroke and other designs;
5. Support up to 20 content areas, free typesetting;
6. Support external temperature, humidity, brightness and other external sensors.

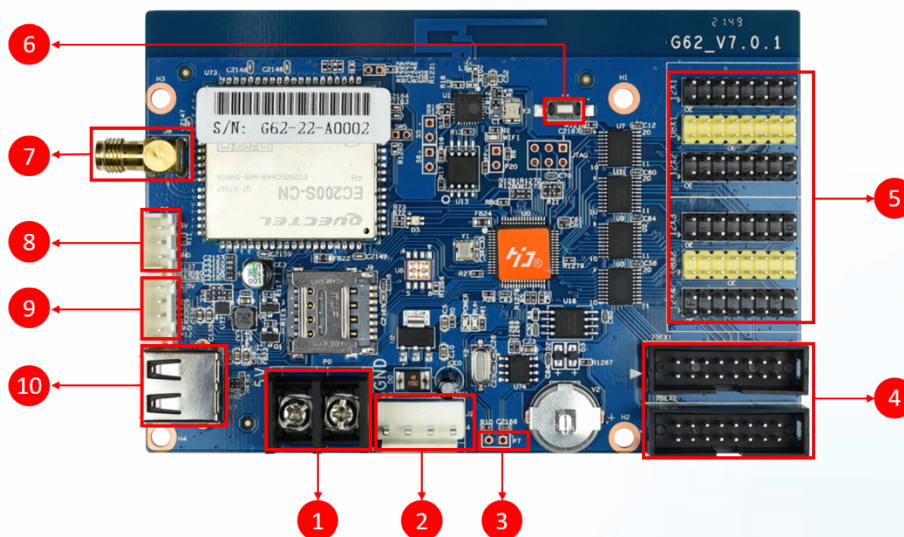
## IV. Function List

Function	Parameters
Control range	Single Color: 1024*64, Widest 2048, highest 64, Dual-color 512*64; Colorful 672*32
FLASH Capacity	4M Byte
Communication	U-Disk、4G
Program Quantity	1000
Area Quality	20 areas with separate zone, and separated special effects and border
Display Showing	Text, Animation words, 3DText, Graphics (pictures, SWF), Excel, Timing, Temperature (temperature and humidity), Count, Lunar calendar
Display	Sequence display, button switch, remote control
Clock function	<ol style="list-style-type: none"> <li>1. Support Digital Clock/ Dial Clock / Lunar Time/</li> <li>2. Countdown /Count up, Button Countdown / Count up</li> <li>3. The font、 size、 color and position can be set freely</li> <li>4. Support multiple time zones</li> </ol>
Extended Equipment	Temperatures、 Humidity、 IR Remoter、 Photosensitive sensors、 etc.
Automatic switch screen	Support timer switch machine
bright adjustment	Support three brightness adjustment modes: manual adjustment, automatic adjustment, adjustment by time period
Working power	3 watts

## V. Product Size



## VI. Interface Description



- ① Power socket: 5V DC power supply terminal;
- ② Power socket: 5V DC power supply foolproof interface;
- ③ P7: Connect the brightness sensor to automatically adjust the brightness of the LED



display;

- ④HUB75 interface: cable interface, connect to full-color module;
- ⑤HUB interface: yellow is HUB08 interface, generally connected to two-color and indoor P3.75 modules; black is HUB12 interface, generally connected to single-color modules;
- ⑥Test button: test the display module;
- ⑦Wi-Fi interface: connect an external Wi-Fi antenna;
- ⑧P5 interface: connect the temperature/humidity sensor and display it on the LED screen;
- ⑨P12 interface: reserved, no definition yet;
- ⑩USB interface: insert U disk, update parameters and programs.

## VII. Technical Parameters

	最小值	典型值	最大值
<b>Rated voltage (V)</b>	4.2	5.0	5.5
<b>Storage temperature (°C)</b>	-40	25	105
<b>Work environment temperature (°C)</b>	-40	25	80
<b>Work environment humidity (%)</b>	0.0	30	95
<b>N.W. (kg)</b>			
<b>Certified product</b>	CE、FCC、RoHS		

### Precautions

1. To ensure the time storage of the control card during normal operation, please ensure that the battery on the control card is not loose;
2. In order to ensure the long-term stable operation of the system, please use the standard 5V DC power supply voltage as much as possible;
3. There may be slight differences between the pictures in the specification and the actual product. The actual product shall prevail. If you have any questions, please contact the salesperson or technical support.