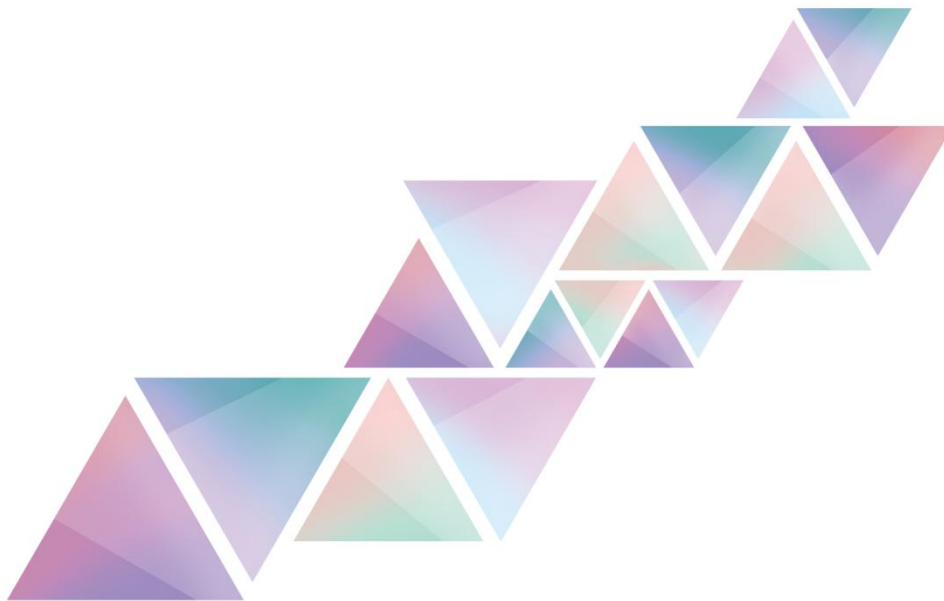


KS606

Sending box

Version: v1.2

Release Date: November 2021



Manual



TEL 400 159 0808
Web: www.kystar.com.cn

Beijing KYSTAR Technology Co., Ltd.

Professional Ultra HD Video Display
Control system integrated solution and service provider

Version record

version number	Change details	release time
V1.0	first release	2014.07.01
V1.1	change cover	2021.10.25
V1.2	Correct size data	2021.11.18

Statement

Thank you for using our company's products.

The copyright of this manual belongs to our company, and any content of this document is strictly prohibited to be reproduced, transmitted, distributed and stored in any form without the written permission of our company. The company reserves the right to modify and improve any product features described in this document without prior notice.

This product may come with related control software, the software is for your use only, and the ownership of the software belongs to our company. You may make copies, but only for personal use. If you use this software for other purposes, especially commercial purposes, please contact our company. The company reserves the right to pursue legal responsibility for infringement.

Please read this manual carefully before use. Improper operation may cause damage to the product; this product is a live work product, please pay attention to the safety of electricity. If you do not follow the instructions in this manual and take inappropriate operations, the company will not be responsible for the resulting property damage and personal injury. In the event of any conflict between this article and local laws and regulations, the local laws and regulations shall prevail.

If you use this product, it means that you agree with the above statement. If you do not agree with the above statement, please contact the seller and go through the corresponding return procedures.

Certification Instructions

“CE”Certification

EN 55022: 2010

EN 55024: 2010

EN 61000-3-3: 2013

EN 61000-3-3: 2014

EN 0950-1: 2006+A11: 2009+A1: 2010+A12: 2011+A2:2013

“FCC”Certification

FCC Part 15

ANSI C63.4: 2014

“ROHS”Certification

EPA 3050B: 1996, EN1122:2001

EPA 3052: 1996, EPA 3060A

EPA 7196, EPA 3540C, EPA 8270C









Version Information

Version: v1.2

Release Date: November 2021

Safety Precautions

For your safety, please read this section carefully.

	<p>Power supply The power supply for normal operation of this device is 100~220V AC, please make sure to use this product within this voltage range.</p>
	<p>High voltage This equipment contains high voltage components.</p>
	<p>Non-professionals do not disassemble This device is not equipped with maintenance parts for users to maintain and use by themselves, please do not open the case to operate by yourself. Self-disassembly may cause irreparable damage to the device. If there is a need for maintenance, please contact the after-sales personnel.</p>
	<p>Make sure the ground is good In order to protect the personal safety of users, please ensure that the power cable is well grounded before use.</p>
	<p>Keep away from strong magnetic fields, motors and transformers In order to ensure the normal use of the equipment, please keep away from strong magnetic fields, motors and transformers.</p>
	<p>Pay attention to moisture Keep the use environment dry. If the device is accidentally damp, please do not connect to the power supply, and the device should be dried before use.</p>
	<p>Keep away from explosives Do not use this product in flammable and explosive environments.</p>
	<p>Prevents liquid or conductive debris from entering the interior of the case It is necessary to strictly prevent conductive substances such as liquid or metal debris from entering the inside of the equipment chassis.</p>

Catalog

1.Product introduction.....	1
2.Panel introduction.....	1
3.Port Specifications.....	2
4.Installation Notes.....	2
4.1Sending card installation.....	2
4.2 connect method.....	3
5. debug step.....	3

1.Product introduction



Overview

KS606 is a management terminal device for sending cards. It is an independent management unit, which is convenient for the management of power supply and signal on the spot of multiple sending cards, and conforms to international and industry standards.

This product has the following features:

- 6 pcs Independent power supply and installation of 6 small sending cards
- 1.5U chassis for easy installation

2.Panel introduction

2.1 Front panel introduction

The red switch is the power switch button, ON is the power-on state, OFF is the power-off state



Switch

2.2 Back panel introduction

KS606 can be compatible with 6 two-network port sending cards of mainstream brands on the market, and

has an independent power supply unit, which is convenient for on-site power supply and signal management of multiple sending cards.



serial number	Function Description
①	Sending card installation area, 6 sending cards can be installed independently

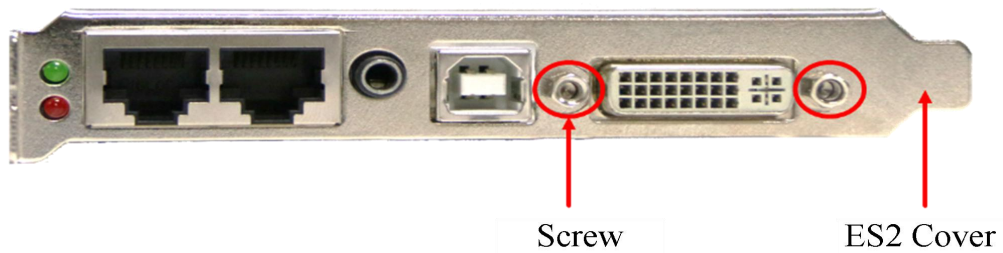
3.Port Specifications

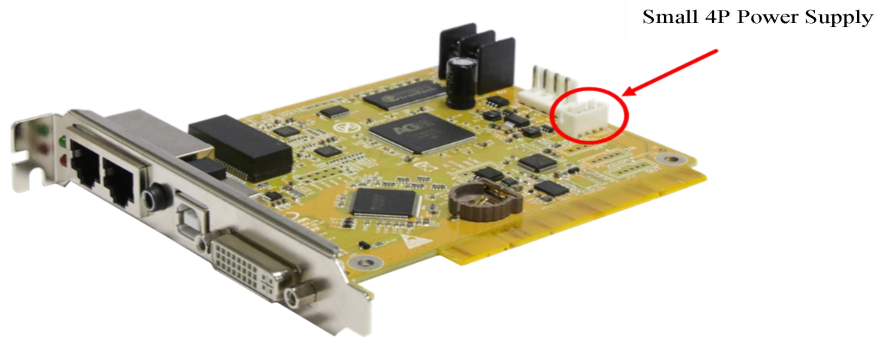
Machine specification	
Input power	100-240V AC~50/60Hz 1.0A
Operating temperature	-20°C~85°C
Working humidity	0°C~40°C
Dimensions	483×340×72mm (L×W×H)
net weight	5KG
Machine power consumption	50W

4.Installation Notes

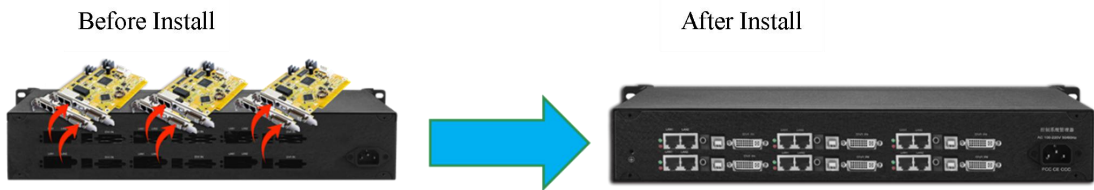
4.1Sending card installation

Remove the screws on the left and right sides of the KS604, remove the hexagonal screws of the sending card, remove the front cover of the sending card, and then put ES2 into the KS604 box. After the installation is complete, insert the small 4P 5V power supply cable on the sending card.



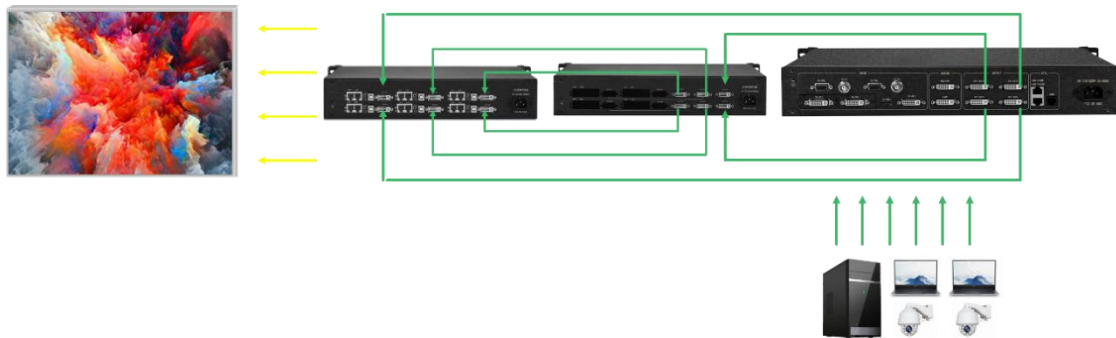


Install sending card



4.2 connect method

The output of video processor is connected to the DVI distributor, and then the DVI distributor is connected to the 4 sending cards. By modifying the coordinates of the sending card, the 2 small sending cards are spliced together. The remaining 2 sending cards are directly connected by the output of the splicer.

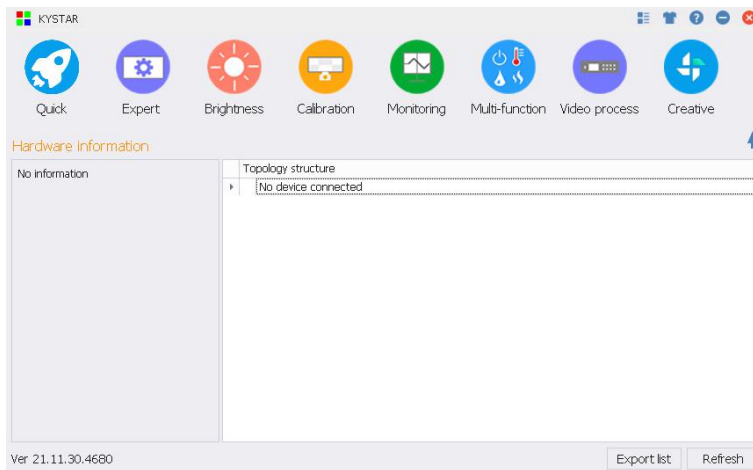


5. debug step

1、 Confirm parameters before commissioning

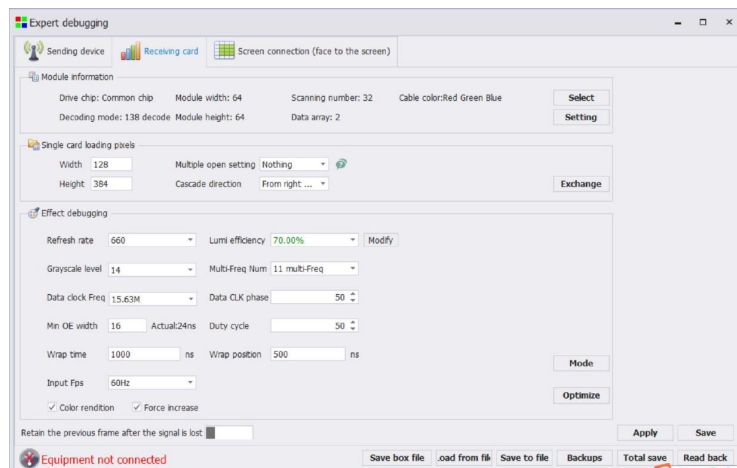
The topology diagram is shown in the figure: the display content is basically the same as that of the sending device, and the device model, version number, and receiving card model and version number can be detected.

It is recommended to use expert screen adjustment for debugging. The wizard screen adjustment will cause slow debugging due to the large number of network ports and receiving cards.



2、 Receiving card interface:

- ① Enter the module selection to see if there is a file matching the unit board, if not, select the smart setting
- ② Single card loading: Input the loading points of each receiving card. If the on-site module wiring is multi-open, select it in the multi-open setting, and the cascading method is the same.
- ③ Effect debugging: In the case of normal large screen display, increase the refresh rate to adjust the data clock frequency and multiplier



3、 Display connection:

Facing the LED screen, input the number of card rows and card columns, and then route the cables in sequence according to the load order of the network cables.
Or do smart stringing. After application, click to cure all

Sending box KS606 manual

