

# Linsn RV908H Receiver Card

2016 Dec

## 1. Function



- 1) 12 hub75 interface on board, no extra hub card needed;
- 2) Single card can output 24 groups RGB data;
- 3) Single card maximum support  $512 \times 384$  pixels;
- 4) Support temperature detection;
- 5) Support the cabinet-door monitoring (open/close);
- 6) Two lines fan-speed monitoring;
- 7) Humidity monitoring (humidity sensor sold separately);
- 8) Smoke monitoring (smoke module sold separately);
- 9) Three lines voltage monitoring: one for the system, two for

cabinet power;

- 10) Support pixel-by-pixel brightness calibration; single-card color space conversion;
- 11) Support network cable BER test;
- 12) Support hot backup with dual receiver cards for demanding performances screen;
- 13) High refresh rate and high grey level with most of the driver ICs;
- 14) In line with RoHS standards;
- 15) In line with EU standards CE-EMC class B;

1)

### **RV908H PINOUT**

The receiving card has 2 operating modes, only supporting Full-color and two-color screen. Normal mode has 8 available interfaces; 12-group-data-mode has 12 available interfaces.

Each interface output data is as following:

R1	1	2	G1
U1	3	4	GND
R2	5	6	G2
U2	7	8	GND
A	9	10	B
C	11	12	D
CLK	13	14	LAT
OE	15	16	GND

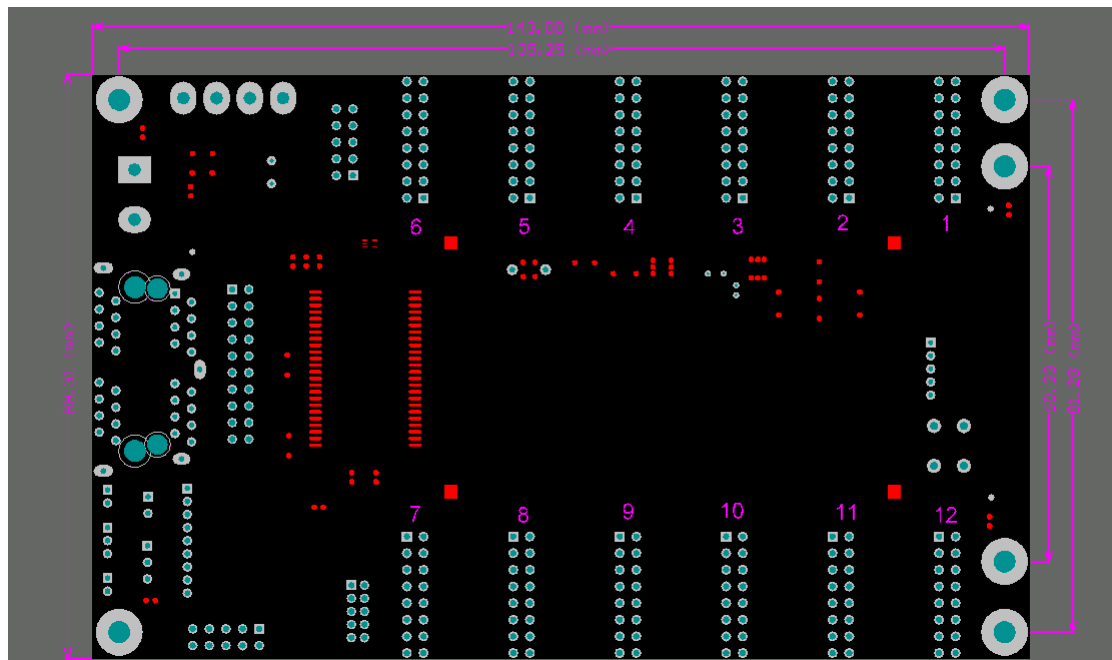
## 2)

## RV908H on-board

### monitoring

Interface on Receiving card(see the silk-screen)	Function	Usage
FAN	2 lines fan speed monitoring	Fan with Control Line
DOOR	cabinet door open/close monitoring	To form Open/close circle
VOLT	voltage monitoring	Connect to VCC
SMOKE	smoke monitoring	Smoke monitoring module SK901 is sold separately
HUM	humidity monitoring	Humidity monitoring module SK901 is sold separately
LCD	LCD module for displaying real-time monitoring information	LCD monitoring module SK901 is sold separately

## 4.Dimensions



## 5.Model table

RV908H is in stock. RV918H need make to order.

Model	RJ45 Direction	output	interface

		type
RV908H	90 Degree	interface in front side
RV918H	180 Degree	interface in front side

## 6. Working conditions

Rated voltage (V)	5	maximum value	5.5	Minimum value	4.5
Rated current (A)	0.80	maximum value	0.87	Minimum value	0.73
Rated power consumption (W)	4.0	maximum value	4.8	Minimum value	3.3
Working temperature (°C)	-20°C ~ 70°C				
Working humidity (%)	0% ~ 95%				



You can Get the [Linsn RV908H Receiver Card](#) here