

User Manual



HD-VP410C

Content

Chapter 1 Interface connection	1
Chapter 2 HDSet installation	6
Chapter 3 HD-VP410C Parameter settings.....	8
3.1 Connection	8
3.2 Basic Setting	8
3.2.1 Screen Configuration	9
3.2.2 Video processor Setting.....	12
Chapter 4 Advanced function	14
4.1 USB Playing.....	14
4.2 Change function of buttons	15

Chapter 1 Interface connection

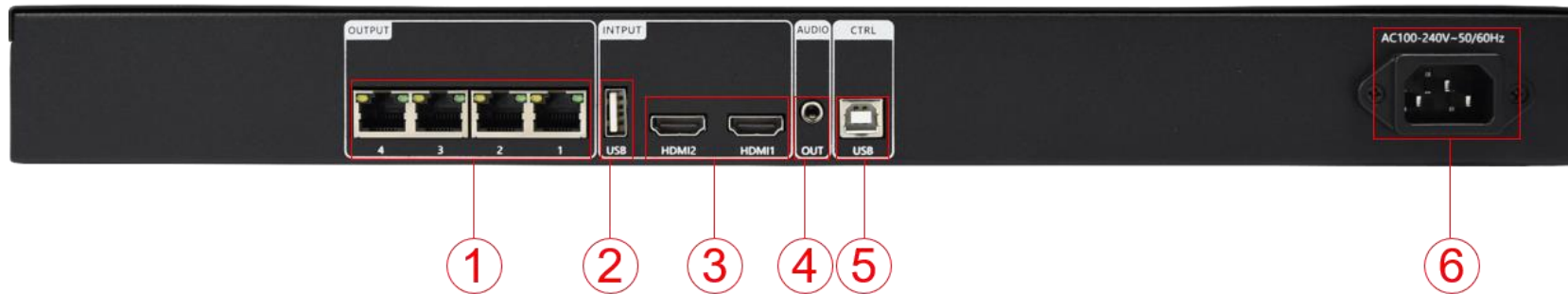
Front panel:



No.	Interface Description
1	Power switch button
2	Infrared remote control receiver
3	Brightness increases / Play the next program file in the U-disk
4	Brightness decreases / Play the previous program file in the U-disk

5	HDMI 1 Signal selection button / Pause or play the program in the U-disk
6	HDMI 2 Signal selection button / Stop the program in the U-disk
7	USB Content playback selection button
8	Partial or Full-screen toggle button
9	Screen one-key Pause / Video and image switching playback

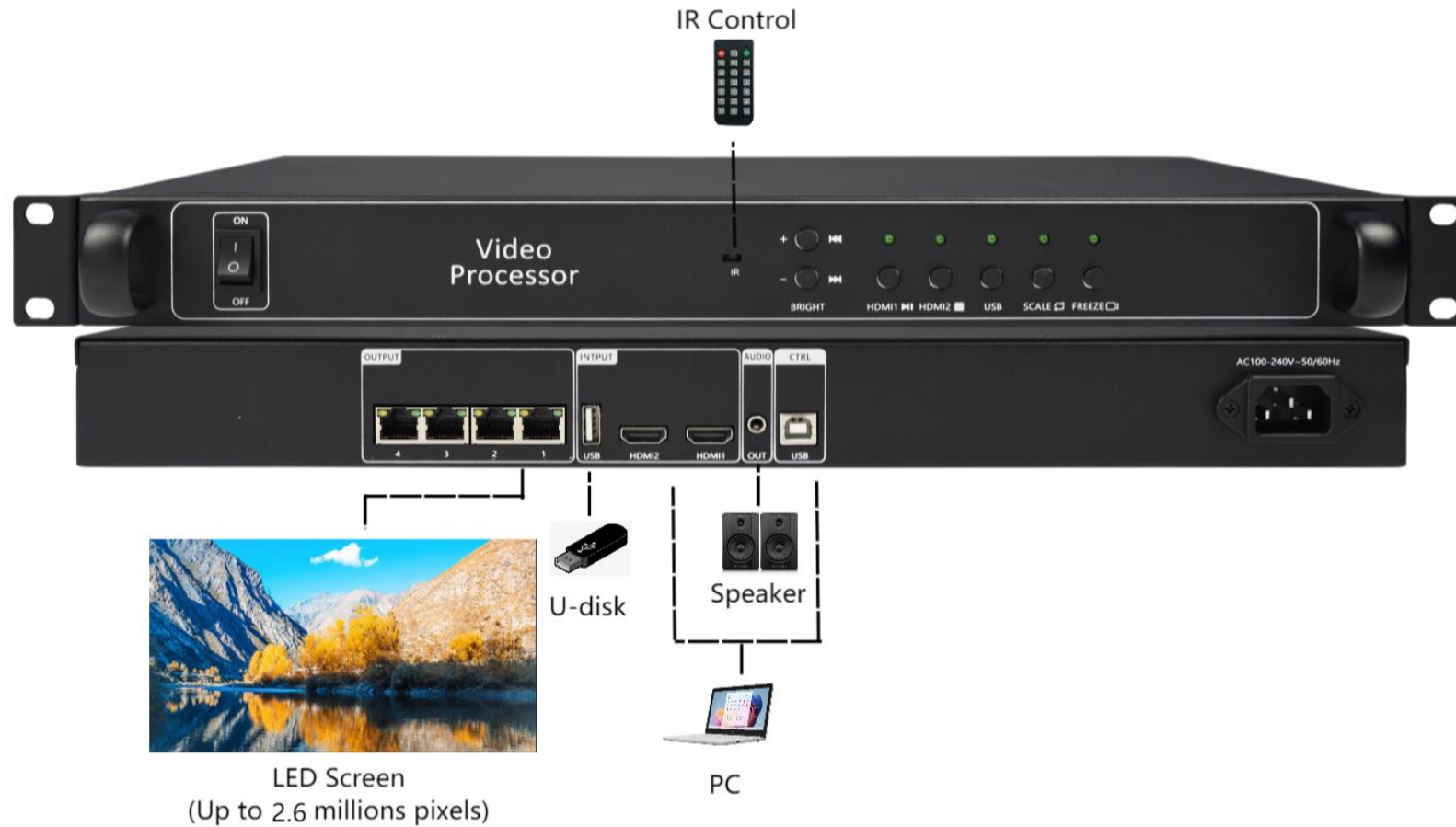
Rear Panel:



No.	Interface Description
1	Gigabit Ethernet port Transmission speed 1Gbps, used for cascading receiving cards, transmitting RGB data stream
2	USB2.0 input interface Support insert U disk to play video, picture

	<p>Video file formats: mp4, avi, mpg, mkv, mov, vob and rmvb.</p> <p>Video encoding: MPEG4 (MP4), MPEG_SD/HD, H.264 (AVI, MKV), FLV.</p> <p>Image file formats: jpg, jpeg, png and bmp</p>
3	<p>HDMI 1 and HDMI 2 input interface</p> <p>Interface form: HDMI-A</p> <p>Signal standard: HDMI 1.3 backward compatible</p> <p>Resolution: VESA standard, $\leq 1920 \times 1080p@60Hz$</p>
4	<p>TRS 3.5mm dual channel audio output port</p> <p>Connect audio power amplifier for high-power audio external amplifier</p>
5	<p>USB-B interface</p> <p>Connect the computer for debugging the parameters of the receiving card, program upgrade, etc.</p>
6	<p>AC input interface 110V~240V 50/60Hz</p>

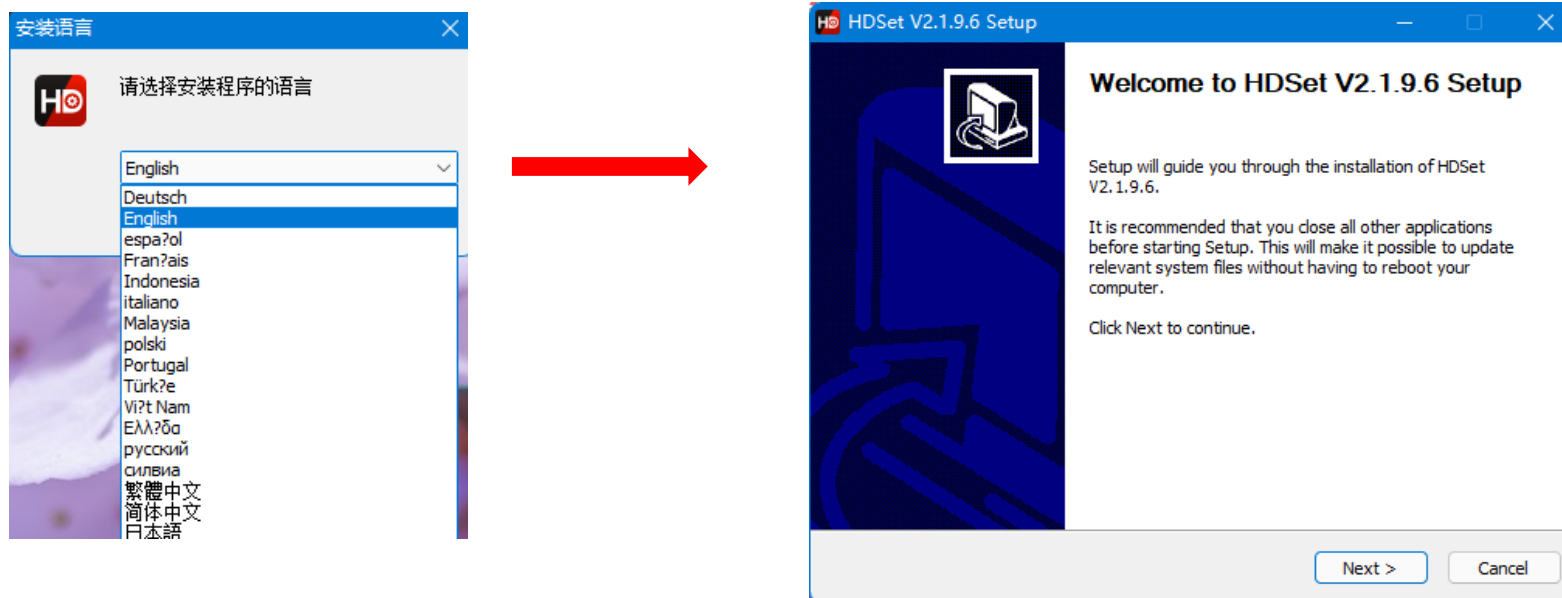
1.2 Hardware connection



Chapter 2 HDSet installation

Please download the installation package of HDSet software from Huidu's official website www.huidu.cn, and complete the installation according to the diagrams below:

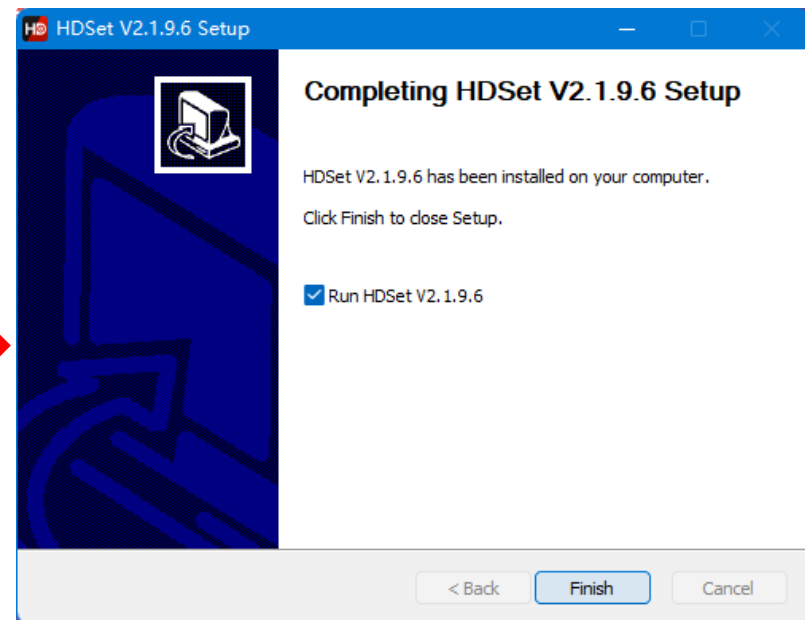
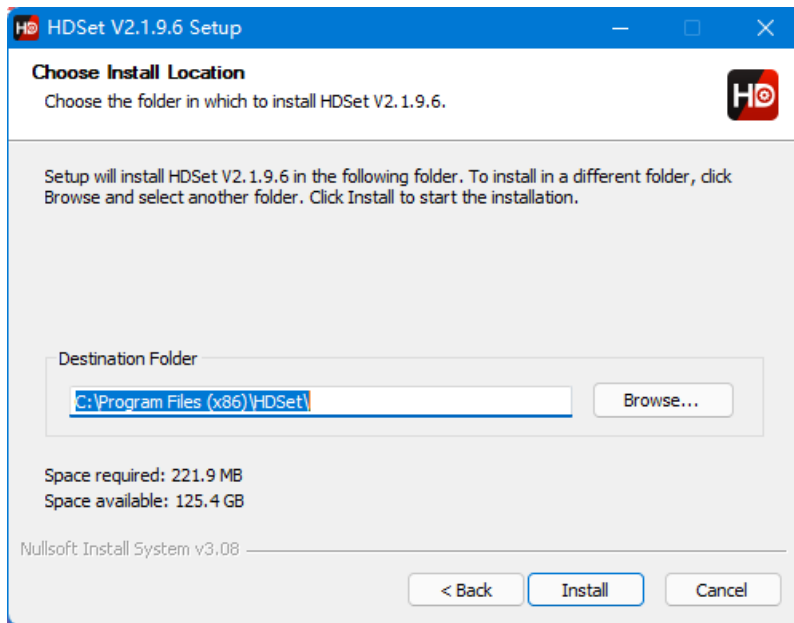
1.Run the software package,then select language for installer. Click [OK] to go on.



2. After selecting a language, an installation wizard like below will appear. Click [Next].

Choose the installation location, click [Browse] to change the default target location, then click [Install] after completing;

After the installation is complete, you are ready to use HDSet.



Chapter 3 HD-VP410C Parameter settings

3.1 Connection

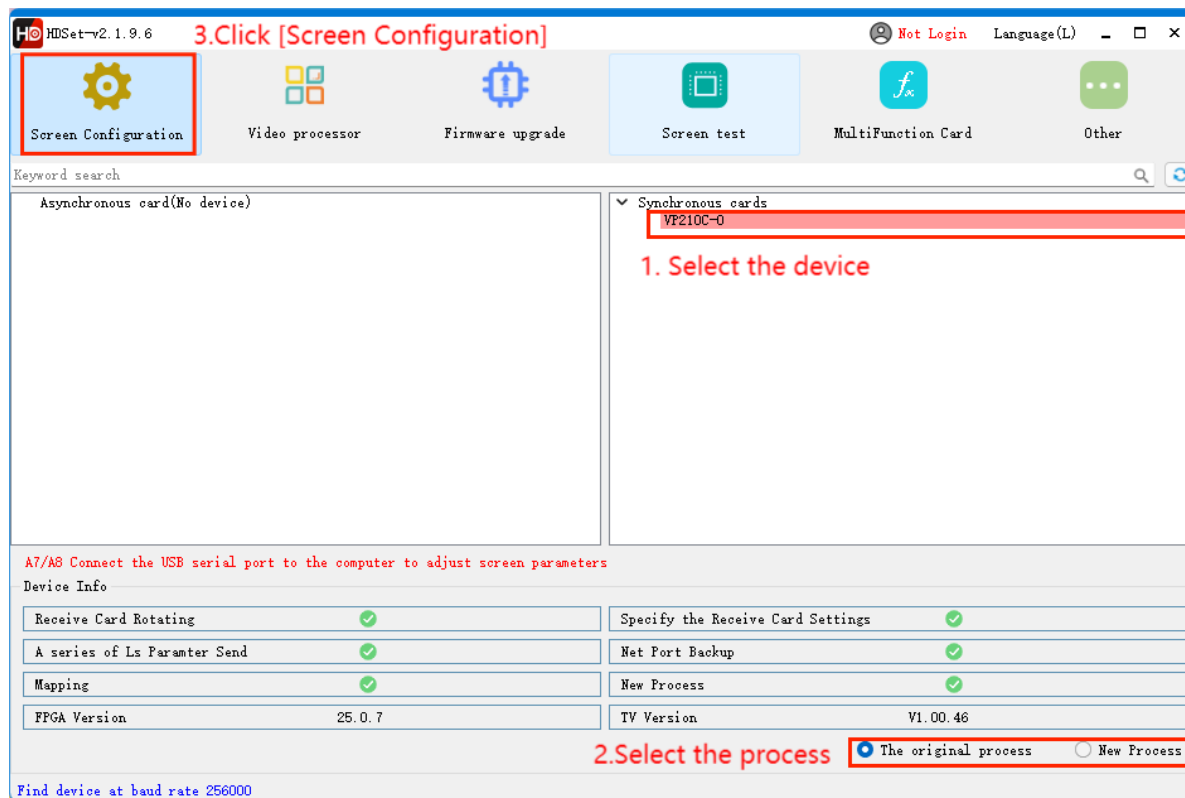
Connect the VP410C to the computer by USB-B type cable.



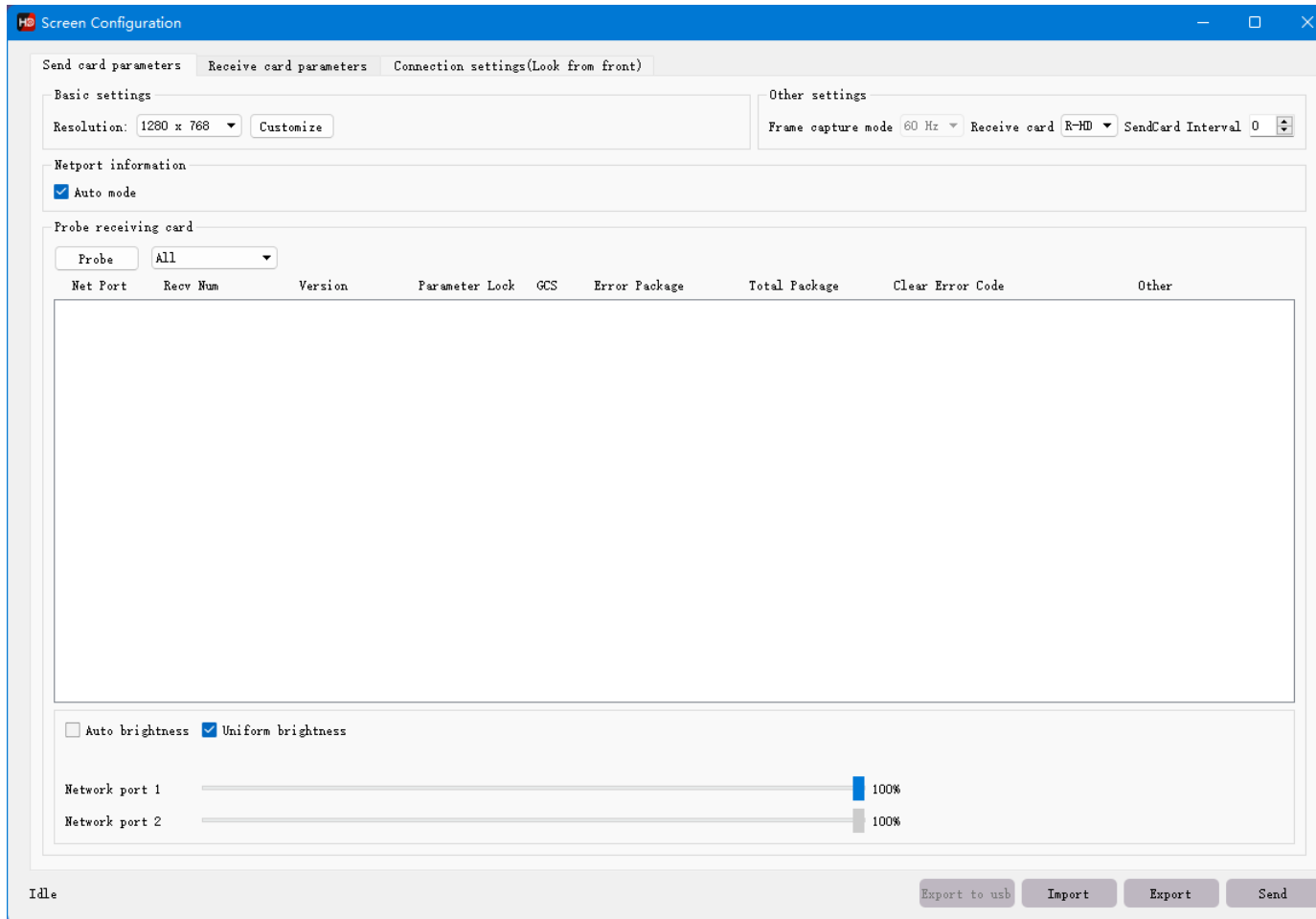
3.2 Basic Setting

3.2.1 Screen Configuration

1.Run HDset software,then select device and process, click [Screen Configuration].



2. you can debug receiving cards.



Screen Configuration

Send card parameters Receive card parameters Connection settings(Look from front)

Basic parameters

Refresh rate: 120 Refresh rate acceleration: 2

Gradation: 512 Brightness level: Normal brightness

DCLK Frequency: 20.6MHz Priority mode: Refresh rate priori

Phase: 1 Gray mode: Low gray balance

Blanking Line: 25 Line break time: 0

Refresh optimization

HUB settings

HUB75-12 (24RGB) HUB75-10 (20RGB)

HUB75-16 (32RGB) HUB75-20 (extended)

R505 (28RGB) Serial 128 group

Other

Load File Smart settings Advanced settings Data group exchange

Color channel Data set offset

Tips

Module type: Full Color

Scan: 1 / 16

Decoding method: 138

Data polarity: Low effective

OE polarity: Low effective

Highly effective: 68.39%

Min OE: 1328

Drive: Conventional chip

etails Of Modul

Case

Mode: Single separate

Width: 128 <= 443

Height: 128 <= 512

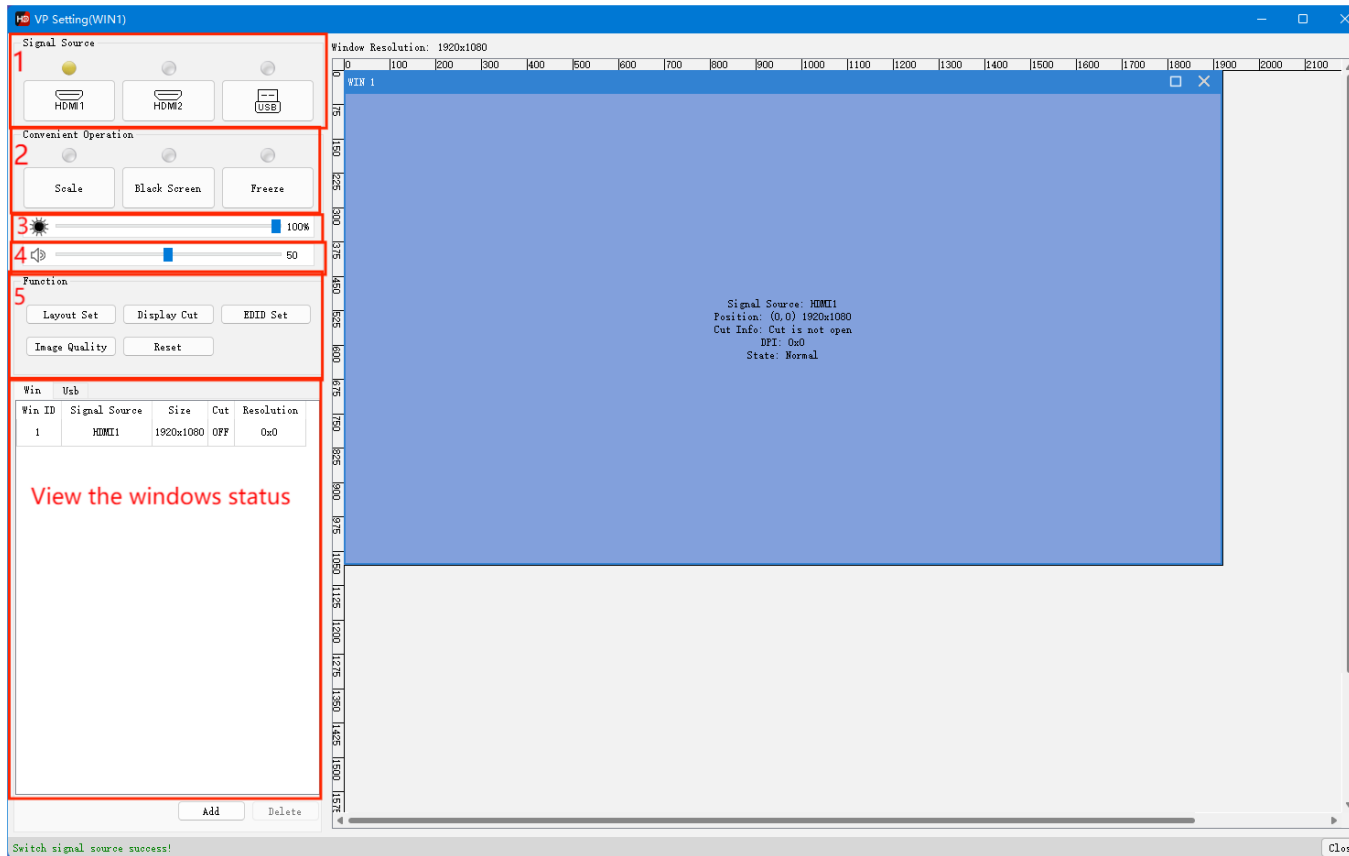
Read back Network port 1 Card 1

Idle Export to usb Import Export Send

3.2.2 Video processor Setting

You can do processor setting here.

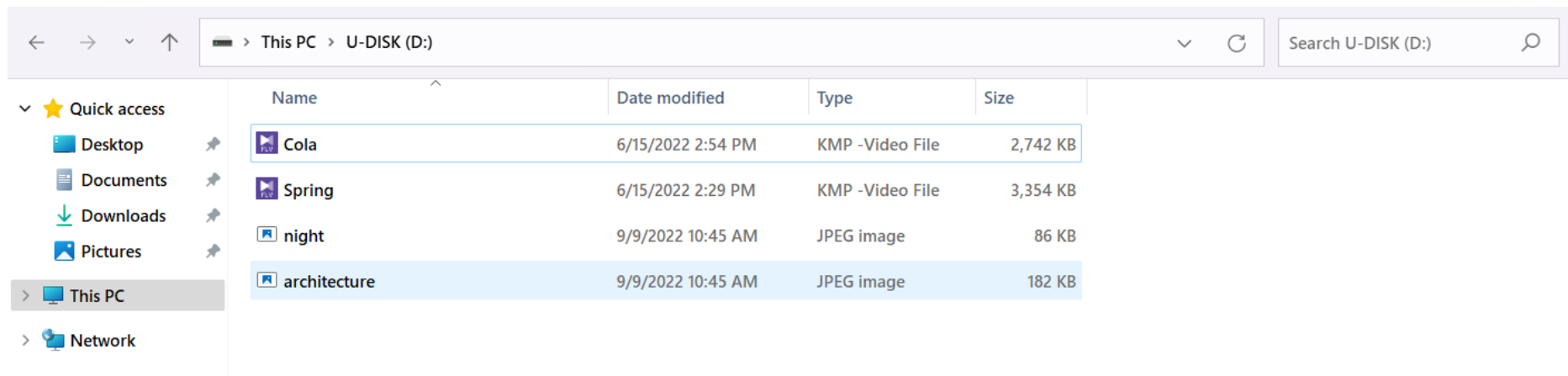
- 1.Select Sinal source.
- 2.Give [Scale],[Black Screen],[Freeze] order.
- 3.Set fixed brightness.
- 4.Set fixed volume.
- 5.Use the Function,such as [Layout setting],[Display cut]..



Chapter 4 Advanced function

4.1 USB Playing

1.Put the video and picture in the root catalog of U-disk.







2.Insert the U-disk to the VP210C.



4.2 Change function of buttons

When insert your U-disk, press the 'USB' button to play video or picture. When you want to use the change function,press the 'USB' button again.Each button's function will change. As follow:

NO.	BUTTON	CHANGE FUNCTION	PS
1	BRIGHT+	USB play mode,change to  , Play the previos file in present folder.	
2	BRIGHT—	USB play mode,change to  , Play the next file in present folder.	
3	HDMI1	USB play mode,change to  , pause/start	
4	HDMI2	USB play mode,change to  , stop playing	
5	SCALE	USB play mode,change to switch play mode (playbill loop or single file loop)	
6	FREEZE	USB play mode,change to switch the category of USB playing file	
7	HDMI1 + FREEZE	Press HDMI1,FREEZE simultaneously;after 3 seconds,device goes into function button lock status , 'HDMI1', 'HDMI2' and 'USB' lamps lighten, 'Non-current input source' lamp flash.When in function button lock status, Press HDMI1,FREEZE simultaneously 3 seconds will unlock.	
8	SCALE + HDMI2	When USB play mode,change to update the firmware, 'HDMI1' , 'USB', 'FREEZE'lamp flash when updating.	