



# Asynchronous Sending

---

## Datasheet **Card Y70**

Version : Ver.2.1

## Statement

Dear user friend, thanks for choosing Shanghai Xixun Electronic Technology Co., Ltd. (hereinafter referred to as Xixun Technology) as your LED advertising equipment control system. The main purpose of this document is to help you quickly understand and use the product. We strive to be precise and reliable when writing the document, and the content may be modified or changed at any time without notice.

## Copyright

The copyright of this document belongs to Xixun Technology. Without the written permission of our company, no unit or individual may copy or extract the content of this article in any form.

## Trademark



is a registered trademark of Xixun Technology.

# Update Record

---

No.	Version	Update	Revise
1	Ver.1.0	Initial	2021.01.04
2	Ver.1.1	Image change	2021.06.08
3	Ver.2.0	Add accessories	2022.03.21
4	Ver.2.1	Parameters change	2022.03.21

The document is subject to change without prior notice.

Shanghai Xixun Electronics Co., Ltd.

# Product Introduction

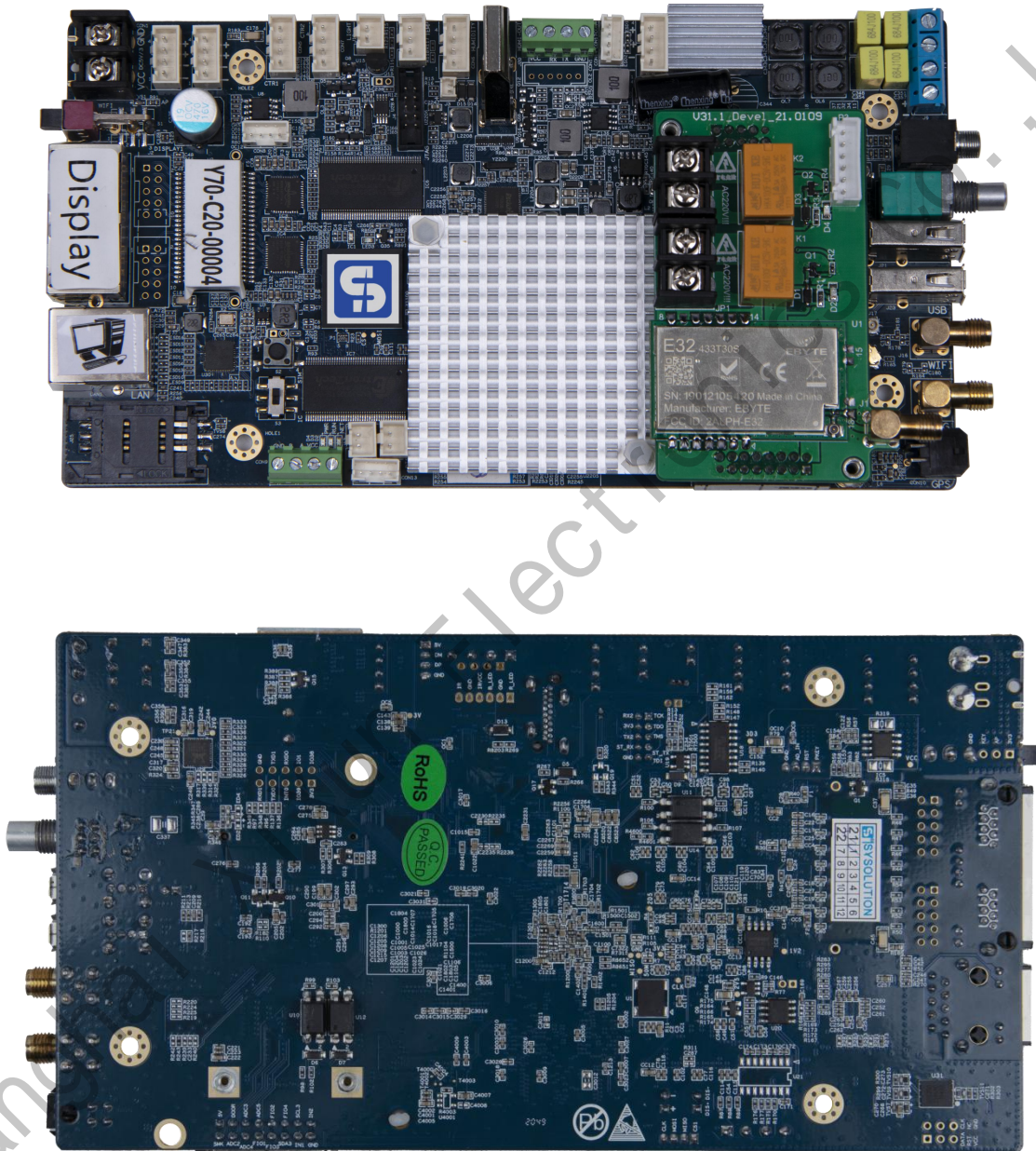
---

Y70 is a highly integrated and high-performance quad-core Cortex-A17 core controller, can run up to 1.8 GHz, with 2G memory and 16 GB EMMC high-speed flash memory. It also supports synchronous HDMI output signals. It is more suitable for commercial display fields, such as mirror screen, advertising machine, lamp pole screen and so on.

With the developing of LED display industry, need to support HDMI output monitoring in some occasions, as well as wired network, 4G, WiFi wireless transmission, remote cluster control, and need to be able to control through mobile phones.

# Product Pictures

---



Y70 Product pictures

# Features

---

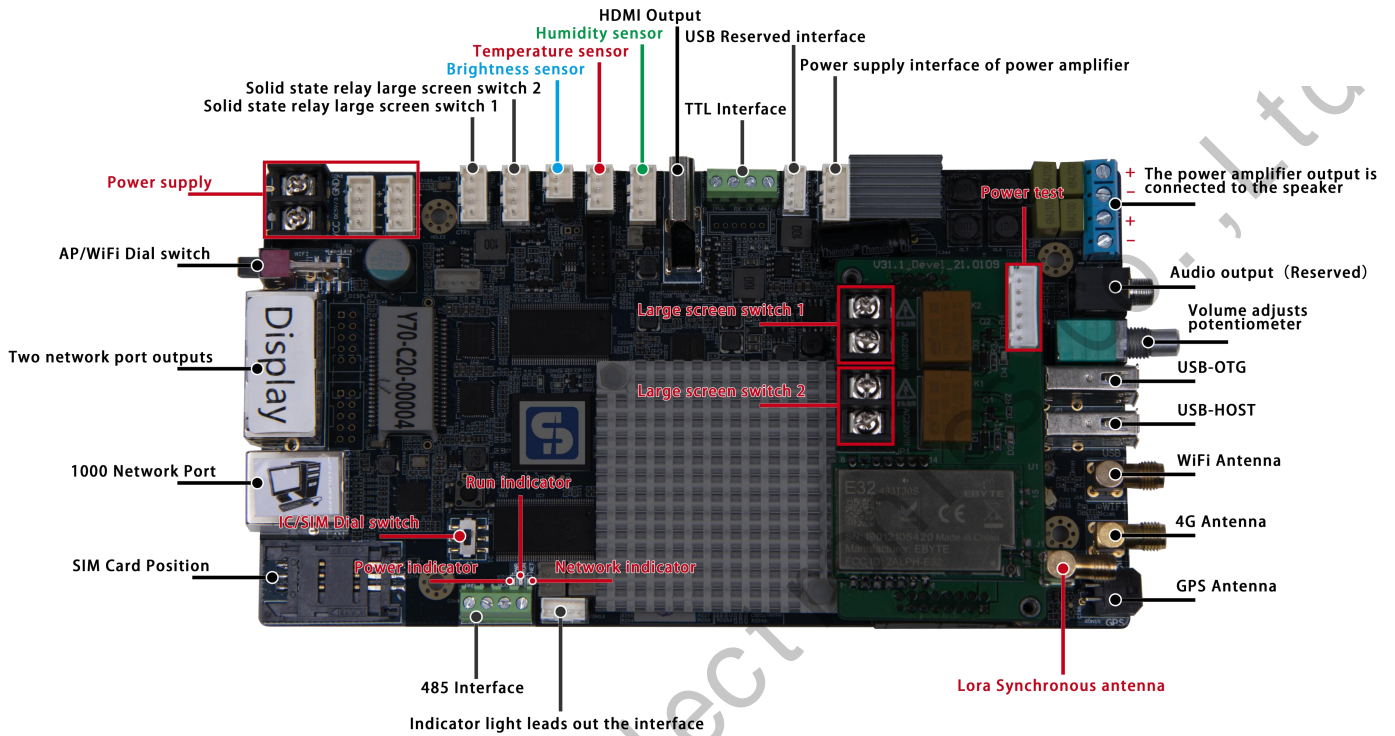
- a. Integrated power amplifier left and right channels.
- b. Support HDMI output.
- c. Support Lora module to realize multi-screen wireless synchronous playback mechanism.
- d. On-board automatic brightness sensor interface , directly plug in the brightness probe then can be used to automatically adjust the brightness.
- e. On- board WiFi module, supporting AP mode and Station mode.
- f. Built-in Web Sever , support local Web page production , support computer , Iphone , android phone , tablet standalone version of the program editing , cross-platform system is fully compatible.
- g. Video hard decoding, support 1080p, support mainstream video, image format and text editing.
- h. Support 1.3 million pixels double network ports , the widest 1920 pixels , the highest 1080 pixels.
- i. Support full color static to 32 sweep module, conventional chip high refresh, high brightness, high gray level.
- j. Fully support all chip manufactures driver chip.
- k. Industrial-grade on board flash.
- l. support USB camera.
- m. Support the storage parameters of the receiving card ( for use with the 8<sup>th</sup> and 9<sup>th</sup>

generation receiving cards)

n. Bundled software : LedOK Express.

Shanghai Xixun Electronics Co., Ltd

# Interface Parameter





# Product Parameter

Main Hardware Indicators	
CPU	Rui core micro RK3288 Four core 1.8GHz Cortex-A17
GPU	Four core GPU Mail-T764
Memory	2G
Memory storage	EMMC 16G
Built-in ROM	2KB EEPROM
Decoding resolution	3840*2160 THE maximum support
On load Pix	1280 x 720 (1920 x 1080)
Operation System	Android 7.1
Play mode	Support loop, timing, insert and other playback modes.
Network support	Ethernet, support WiFi/bluetooth 4.0, wireless peripheral expansion.
Video display	Support MP4 (AVC/H.264、DIVX、XVID) Format
USB2.0 interface	1 个 USB HOST、1 个 USB OTG
Serial port	IIC / TTL / 485
GPS	External GPS (optional )
WiFi、 BT	Built in WiFi, BT4.0 (Optional )
4G	Built-in 4G module communication ( optional)
Ethernet	10M/100M/1000M Adaptive Ethernet

HDMI output	Support
audio output	3.5mm audio port
Power amplifier output	12 V power supply 4Ω BTL syndromes of Maximum power load conditions for2*33W, the smaller the power voltage, the smaller the horn
Configuration Software	LedOK Express

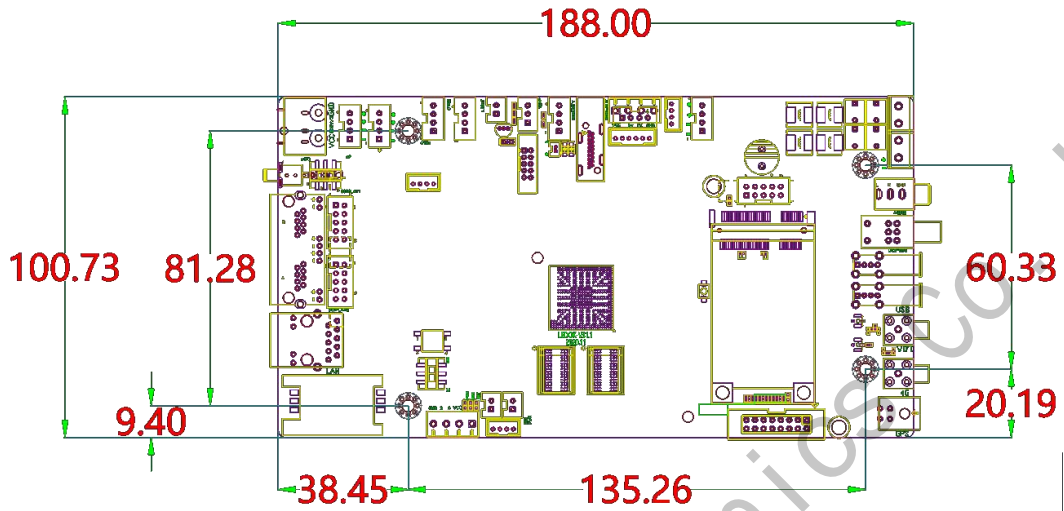
Shanghai Xixun Electronics Co., Ltd

# Technician Parameter

---

Work Parameter	
Input Voltage (V)	DC5~24V
Work Temperature (°C)	-30~75°C
Work Humidity (%)	0%~80% No condensation
Store Temperature (°C)	-40~80°C Recommend 5~35°C
Size (MM)	188 (Length) x100.73 (Wide ) x33.4 (Height )
Weight (G)	1300g

# Dimension



Y70 Dimensional drawing of motherboard

Unit: mm

Shanghai Xixun Electronics Co., Ltd

# Accessories

Optional Accessories	Fitting Function
Multi-function Card R56	Remote power off 2 way + 6 ways power detection+ open/close door (require sensor RD1) + smoke detection (require sensor RM1)
Multi-function Card RS5	Remote power off 2 way + 6 ways power detection+ open/close door (require sensor) + smoke detection (require sensor)+sync mode Lora
Luminance Sensor	RL2
Temperature Sensor	RT1
Humidity Sensor	RH1
Eight elements environmental sensor	R68

# Notes

---

- a. It is strictly to prohibited to disassemble and assemble the product.
- b. It is strictly prohibited to plug and unplug the antenna on line.

Shanghai Xixun Electronics Co., Ltd