

PRODUCT SPECIFICATION

Single-dual Color LED Wi-Fi Control Card
HD-W3A

V1.0

1. Overview

W3A is a high cost-effective single color Wi-Fi controller, easy to operate, better display information, supports variety kinds of single-color display. For the door lintel screen, store screen and other places information display.

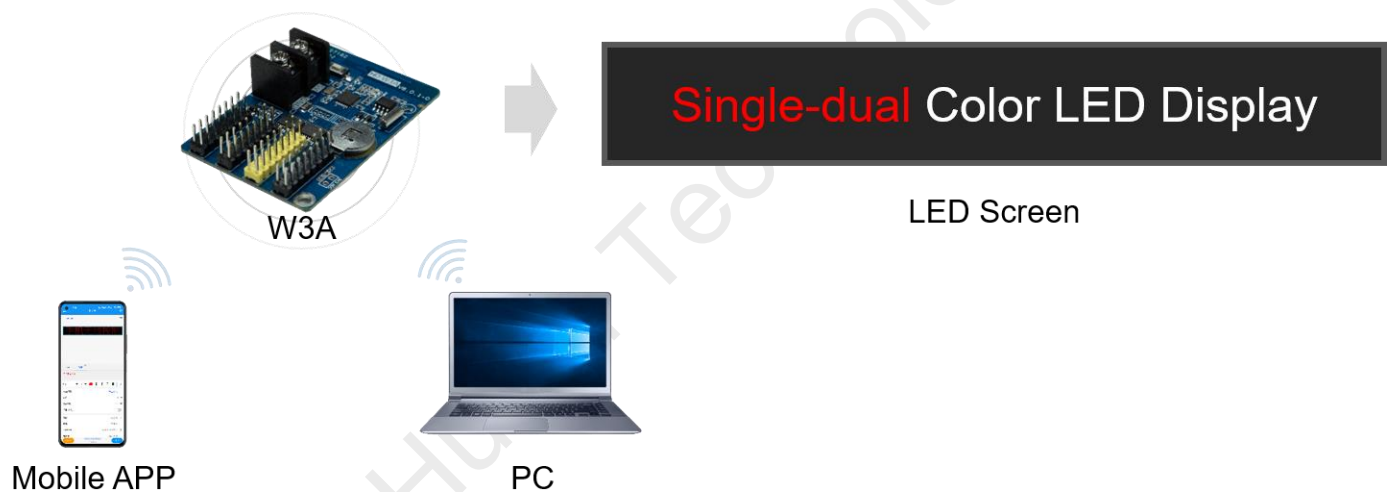
Application Software:

PC: HDSign;

Mobile: "LedArt APP" and "LedArt lite APP";

2. Connection Diagram

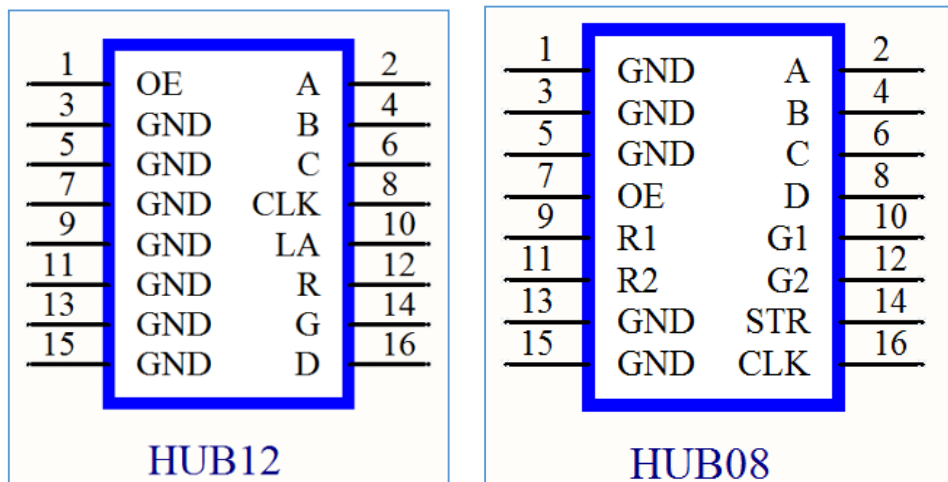
After the Wi-Fi control card is powered on, cell phones and laptops can connect to the control card's Wi-Fi hotspot for debugging or updating programs.



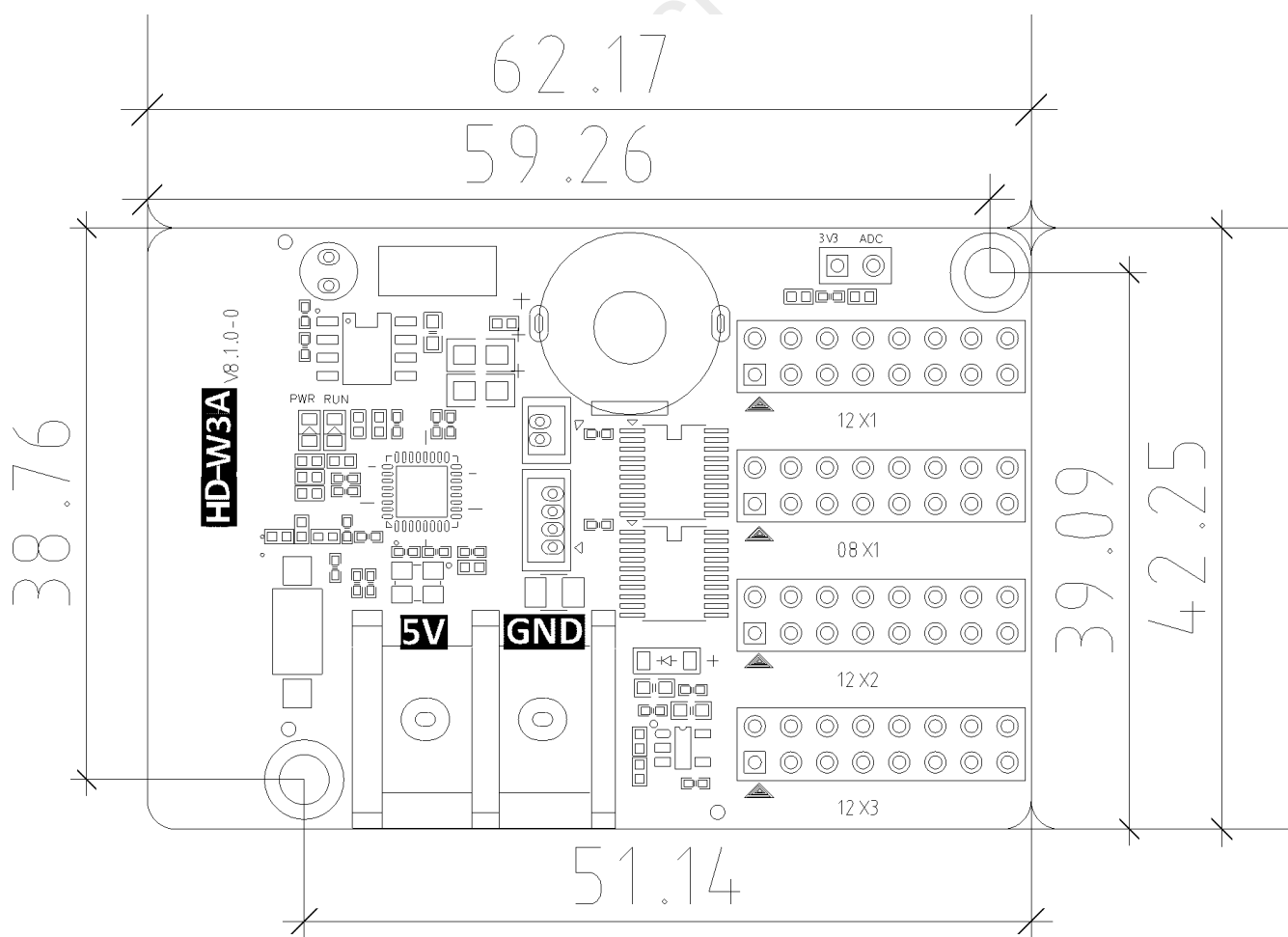
3. Function List

Content	Function description
Control range	Single color: 1280*32, 1024*48; Dual color: 768*32
FLASH Capacity	2M Byte (Practical usage 900K Byte)
Communication	Wi-Fi
Program Quantity	Max 1000pcs Programs.
Area Quantity	20 areas with separate zone, and separated special effects and border
Display Showing	Text, Time, Count, Lunar calendar
Display	Sequence display,
Clock Function	1,Support Digital Clock/ Dial Clock / Lunar Time/ 2,The font, size, color and position can be set freely 3,Support multiple time zones
Expandable Devices	Photosensitive sensor
Automatic Switch Screen	Support timer switch machine
Dimming	Supports three brightness adjustment modes: manual adjustment, automatic adjustment, adjustment by time period
Working Power	3W

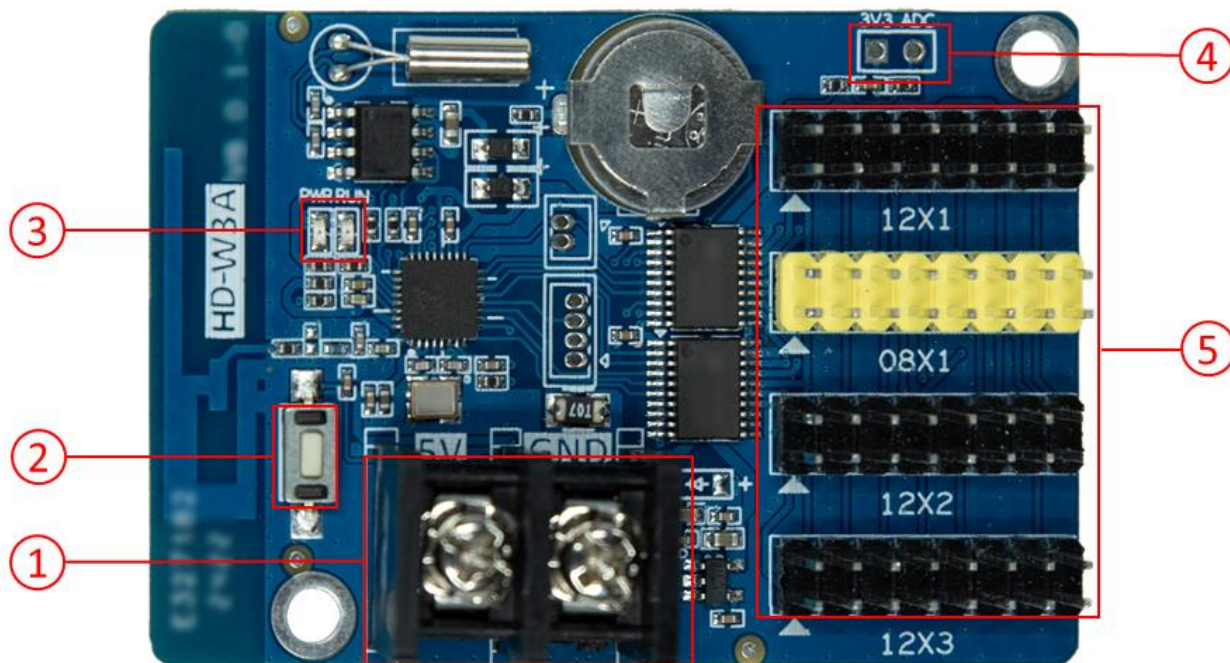
4. Port Definition



5. Size Diagram



6. Interface Description



Serial number	Name	Description
1	Power supply input	Connect to a 5V DC power supply
2	S1	click to switch screen test status
3	Indicator	The power on indicator is on and the Wi-Fi working indicator is blinking
4	P7	Connect brightness sensor
5	HUB input	HUB12 (Black color) & HUB08 (Yellow color),Connect the display

7. Basic Parameters

Parameter Term	Parameter Value
Work voltage (V)	DC 3.3V~5.5V
Work temperature (°C)	-40°C~80°C
Work humidity (RH)	0~95%RH
Storage temperature(°C)	-40°C~105°C

Precautions:

- 1) To ensure that the control card is stored during normal operation, make sure the battery on the control card is not loose;
- 2) In order to ensure the long-term stable operation of the system; please try to use the standard 5V power supply voltage.